

Anti-TIE2 Rabbit pAb



WL05166

For Research Use Only. Not For Use In Diagnostic Procedures

Product Information

Product name	Anti-TIE2 Rabbit pAb	
Source	Rabbit	
Species reactivity	Human, Mouse, Rat	
Tested applications	WB	1:1000-1:2000
	IHC	1:500
	IF	1:500

Cellular localization Cytoplasm

Pack size 50/100/200/500/1000μl

Storage Store at -20°C. **Avoid freeze/thaw cycles.**

Storage buffer Supplied in 20 mM phosphate (pH 7.5), 150 mM NaCl, 100 μg/ml BSA, 50% glycerol and less than 0.02% sodium azide

General Information

Background Tie2 is a tyrosine-protein kinase expressed almost exclusively on endothelial cells. Possesses a unique extracellular region that contains two immunoglobulin-like domains, three epidermal growth factor (EGF)-like domains and three fibronectin type III repeats. This gene is associated with inherited venous malformations of the skin and mucous membranes.

Immunogen Polyclonal antibody is produced by immunizing animals with a synthetic peptide of TIE2.

Purification Polyclonal antibody was purified by Protein A affinity chromatography.

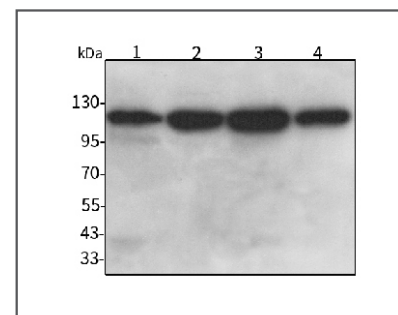
Anti-TIE2 Rabbit pAb



WL05166

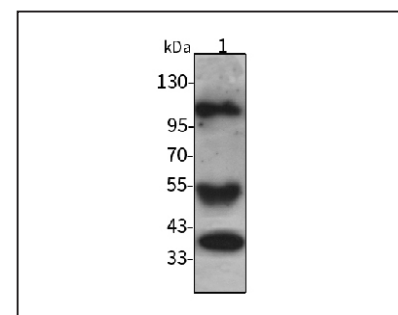
For Research Use Only. Not For Use In Diagnostic Procedures

Product Images



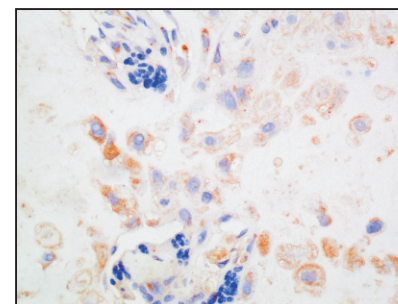
Western blot-Anti-TIE2 pAb

Lane 1: Human Hela cell lysate
Lane 2: Human HEK-293 cell lysate
Lane 3: Human A5493 cell lysate
Lane 4: Human HUVEC cell lysate
All lanes: Anti-TIE2 at 1:1000 dilution
 Lysates/proteins at 20-50 μg per lane.
 Predicted band size: 126 kDa
 Observed band size: 40, 50, 126 kDa



Western blot-Anti-TIE2 pAb

Lane 1: Mouse lung tissue lysate
All lanes: Anti-TIE2 at 1:1000 dilution
 Lysates/proteins at 20-50 μg per lane.
 Predicted band size: 126 kDa
 Observed band size: 40, 50, 126 kDa



Immunohistochemistry-Anti-TIE2 pAb

Immunohistochemical analysis of paraffin-embedded human eclampsia placenta using anti-TIE2 Rabbit Antibody at 1:500 dilution. Perform heat mediated antigen retrieval with Tris-EDTA buffer pH 9.0

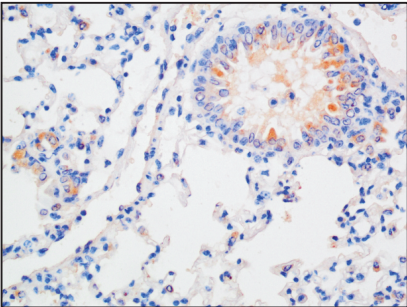
Anti-TIE2 Rabbit pAb



WL05166

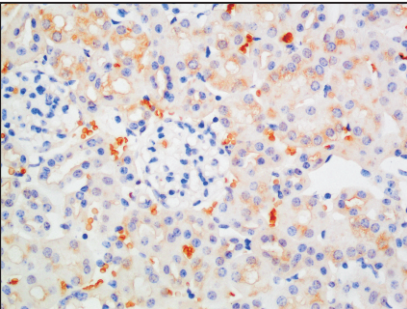
For Research Use Only. Not For Use In Diagnostic Procedures

Product Information



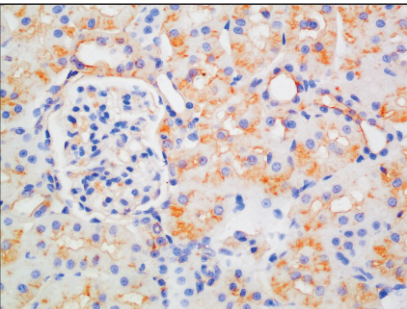
Immunohistochemistry-Anti-TIE2 pAb

Immunohistochemical analysis of paraffin-embedded mouse lung using anti-TIE2 Rabbit Antibody at 1:500 dilution.
Perform heat mediated antigen retrieval with Tris-EDTA buffer pH 9.0



Immunohistochemistry-Anti-TIE2 β pAb

Immunohistochemical analysis of paraffin-embedded mouse kidney using anti-TIE2 Rabbit Antibody at 1:500 dilution.
Perform heat mediated antigen retrieval with Tris-EDTA buffer pH 9.0



Immunohistochemistry-Anti-TIE2 pAb

Immunohistochemical analysis of paraffin-embedded rat kidney using anti-TIE2 Rabbit Antibody at 1:200 dilution.
Perform heat mediated antigen retrieval with Tris-EDTA buffer pH 9.0

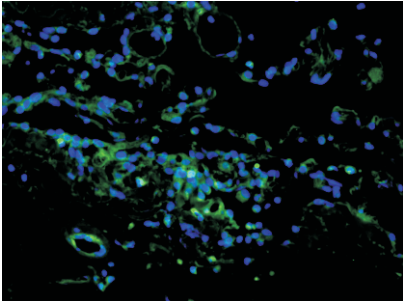
Anti-TIE2 Rabbit pAb



WL05166

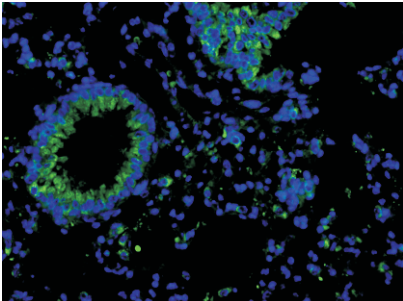
For Research Use Only. Not For Use In Diagnostic Procedures

Product Images



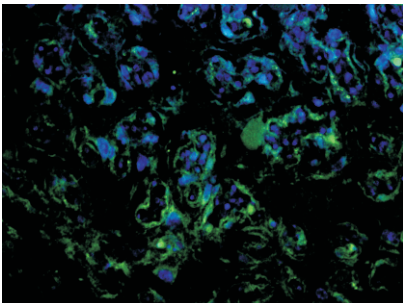
Immunofluorescence-Anti-TIE2 pAb

Immunofluorescence analysis of paraffin-embedded human lung cancer using anti-TIE2 Rabbit Antibody at 1:500 dilution.
Perform heat mediated antigen retrieval with Tris-EDTA buffer pH 9.0



Immunofluorescence-Anti-TIE2 pAb

Immunofluorescence analysis of paraffin-embedded mouse lung using anti-TIE2 Rabbit Antibody at 1:500 dilution.
Perform heat mediated antigen retrieval with Tris-EDTA buffer pH 9.0



Immunofluorescence-Anti-TIE2 pAb

Immunofluorescence analysis of paraffin-embedded rat placenta using anti-TIE2 Rabbit Antibody at 1:500 dilution.
Perform heat mediated antigen retrieval with Tris-EDTA buffer pH 9.0