

## Anti-p-p38 (Thr180/Tyr182) Rabbit pAb



WLP1576

For Research Use Only. Not For Use In Diagnostic Procedures

## Product Information

<b>Product name</b>	Anti-p-p38 (Thr180/Tyr182) Rabbit pAb
<b>Source</b>	Rabbit
<b>Species reactivity</b>	Human, Mouse, Rat
<b>Tested applications</b>	Western blot 1:500-1:1000

*\*Suggested working dilutions are given as a guide only. It is recommended that the user titrates the product for use in their own experiment using appropriate negative and positive controls.*

<b>Molecular Wt.</b>	42 kDa
<b>Pack size</b>	100/200/500/1000μl
<b>Storage</b>	Store at -20°C. <b>Avoid freeze/thaw cycles.</b>
<b>Storage buffer</b>	Supplied in 20 mM phosphate (pH 7.5), 150 mM NaCl, 100 μg/ml BSA, 50% glycerol and less than 0.02% sodium azide

## General Information

**Background**

MAP (mitogen-activated protein) kinases play a significant role in many biological processes, including cell adhesion and spreading, cell differentiation and apoptosis. Four isoforms of p38 MAPK, p38α, β, γ (also known as Erk6 or SAPK3), and δ (also known as SAPK4) have been identified. Similar to the SAPK/JNK pathway, p38 MAPK is activated by a variety of cellular stresses including osmotic shock, inflammatory cytokines, lipopolysaccharide (LPS), UV light, and growth factors. MKK3, MKK6, and SEK activate p38 MAPK by phosphorylation at Thr180 and Tyr182. Activated p38 MAPK has been shown to phosphorylate and activate MAPKAP kinase 2 and to phosphorylate the transcription factors ATF-2, Max, and MEF2.

**Immunogen**

Polyclonal antibody is produced by immunizing animals with a synthetic peptide of p-p38 (Thr180/Tyr182).

**Purification**

Polyclonal antibody was purified by immunogen affinity chromatography.

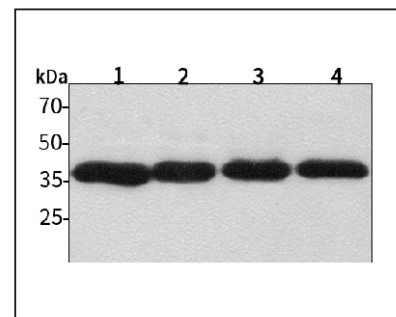
## Anti-p-p38 (Thr180/Tyr182) Rabbit pAb



WLP1576

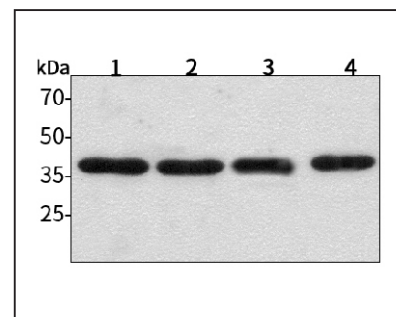
For Research Use Only. Not For Use In Diagnostic Procedures

## Product Images



Western blot-Anti-p-p38 (Thr180/Tyr182) pAb

Lane 1: Human HepG2 cell lysate 30μg  
 Lane 2: Human Hela cell lysate 30μg  
 Lane 3: Human BGC-823 cell lysate 30μg  
 Lane 4: Human MGC-803 cell lysate 30μg  
**Separation gel:** 11% polyacrylamide  
**Electrophoresis:** 100V, 4°C, 3h  
**Transmembrane:** 100V, 4°C, 1h  
**Blocking:** 5% w/v nonfat dry milk, 1 × TBST, at RT with gentle shaking  
**Primary antibody:** 1:1000 in blocking buffer, 4°C, overnight  
**Visualization:** ECL, 30s-2min



Western blot-Anti-p-p38 (Thr180/Tyr182) pAb

Lane 1: Mouse brain tissue lysate 30μg  
 Lane 2: Mouse lung tissue lysate 30μg  
 Lane 3: Rat liver tissue lysate 30μg  
 Lane 4: Rat testicle tissue lysate 30μg  
**Separation gel:** 11% polyacrylamide  
**Electrophoresis:** 100V, 4°C, 3h  
**Transmembrane:** 100V, 4°C, 1h  
**Blocking:** 5% w/v nonfat dry milk, 1 × TBST, at RT with gentle shaking  
**Primary antibody:** 1:1000 in blocking buffer, 4°C, overnight  
**Visualization:** ECL, 30s-2min