

Anti-Cytochrome c Rabbit pAb



WL02410

For Research Use Only. Not For Use In Diagnostic Procedures

Product Information

Product name	Anti-Cytochrome c Rabbit pAb	
Source	Rabbit	
Species reactivity	Human, Mouse, Rat	
Tested applications	WB	1:1000-1:2000
	IHC	1:100-1:200
Cellular localization	Mitochondrion matrix	
Pack size	50/100/200/500/1000μl	
Storage	Store at -20°C. Avoid freeze/thaw cycles.	
Storage buffer	Supplied in 20 mM phosphate (pH 7.5), 150 mM NaCl, 100 μg/ml	
	BSA, 50% glycerol and less than 0.02% sodium azide	

General Information

Background	Cytochrome c is a small heme protein that functions as a central component of the electron transport chain in mitochondria. The encoded protein associates with the inner membrane of the mitochondrion where it accepts electrons from cytochrome b and transfers them to the cytochrome oxidase complex. This Cytochrome c is also involved in initiation of apoptosis. Mutations in this gene are associated with autosomal dominant nonsyndromic
Immunogen	Polyclonal antibody is produced by immunizing animals with a synthetic peptide of Cytochrome c.
Purification	Polyclonal antibody was purified by Protein A affinity chromatography.

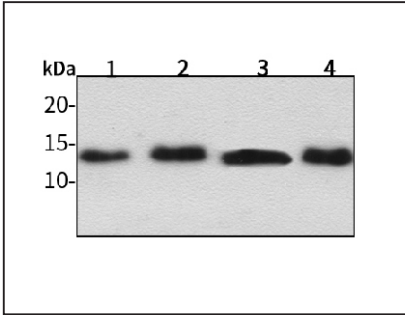
Anti-Cytochrome c Rabbit pAb



WL02410

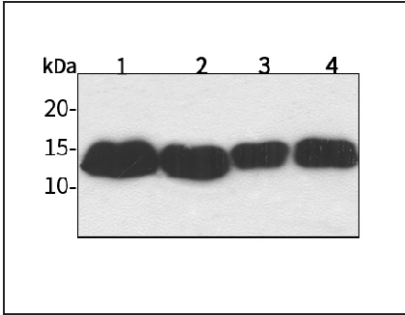
For Research Use Only. Not For Use In Diagnostic Procedures

Product Images



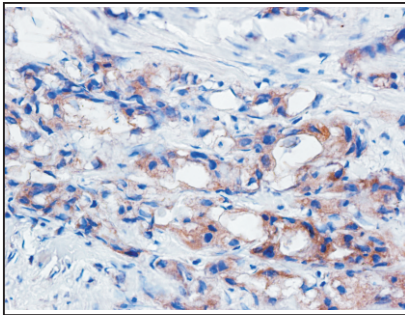
Western blot-Anti-Cytochrome c pAb

Lane 1: Human MGC-803 cell lysate
Lane 2: Human SGC-7901 cell lysate
Lane 3: Human MCF-7 cell lysate
Lane 4: Human HEK-293 cell lysate 30μ
All lanes: Anti-Cytochrome c at 1:1000 dilution
Lysates/proteins at 20-50 μg per lane.
Predicted band size: 12 kDa
Observed band size: 15 kDa



Western blot-Anti-Cytochrome c pAb

Lane 1: Mouse kidney tissue lysate
Lane 2: Mouse heart tissue lysate
Lane 3: Rat liver tissue lysate
Lane 4: Rat brain tissue lysate
All lanes: Anti-Cytochrome c at 1:1000 dilution
Lysates/proteins at 20-50 μg per lane.
Predicted band size: 12 kDa
Observed band size: 15 kDa



Immunohistochemistry-Anti-Cytochrome c pAb

Immunohistochemical analysis of paraffin-embedded human breast cancer using anti-Cytochrome c Rabbit Antibody at 1:200 dilution. Perform heat mediated antigen retrieval with Tris-EDTA buffer pH 9.0

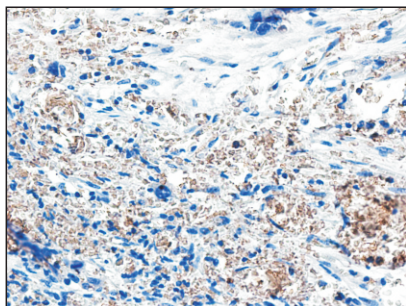
Anti-Cytochrome c Rabbit pAb



WL02410

For Research Use Only. Not For Use In Diagnostic Procedures

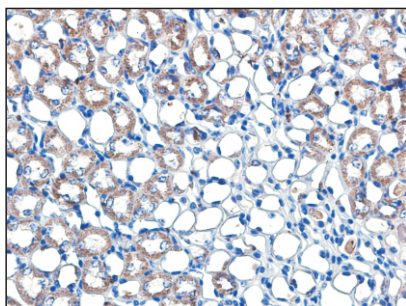
Product Information



Immunohistochemistry-Anti-Cytochrome c pAb

Immunohistochemical analysis of paraffin-embedded human pancreatic cancer using anti-Cytochrome c Rabbit Antibody at 1:150 dilution.

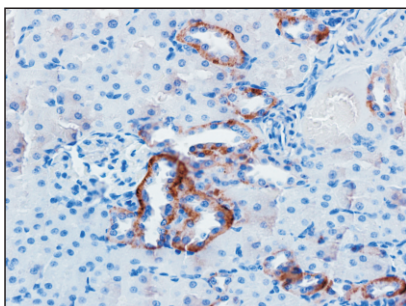
Perform heat mediated antigen retrieval with Tris-EDTA buffer pH 9.0



Immunohistochemistry-Anti-Cytochrome c pAb

Immunohistochemical analysis of paraffin-embedded human pancreatic cancer using anti-Cytochrome c Rabbit Antibody at 1:150 dilution.

Perform heat mediated antigen retrieval with Tris-EDTA buffer pH 9.0



Immunohistochemistry-Anti-Cytochrome c pAb

Immunohistochemical analysis of paraffin-embedded rat kidney (LPS treated) using anti-Cytochrome c Rabbit Antibody at 1:200 dilution.

Perform heat mediated antigen retrieval with Tris-EDTA buffer pH 9.0