

Anti-PD1 Rabbit pAb



WL04252

For Research Use Only. Not For Use In Diagnostic Procedures

Product Information

Product name	Anti-PD1 Rabbit pAb
Source	Rabbit
Species reactivity	Human, Mouse, Rat
Tested applications	Western blot 1:1000-1:2000

**Suggested working dilutions are given as a guide only. It is recommended that the user titrates the product for use in their own experiment using appropriate negative and positive controls.*

Molecular Wt.	32 kDa
Pack size	50/100/200/500/1000μl
Storage	Store at -20°C. Avoid freeze/thaw cycles.
Storage buffer	Supplied in 20 mM phosphate (pH 7.5), 150 mM NaCl, 100 μg/ml BSA, 50% glycerol and less than 0.02% sodium azide

General Information

Background	Programmed cell death 1 ligand 1 (PD-L1, B7-H1, CD274) is a member of the B7 family of cell surface ligands that regulate T cell activation and immune responses. The PD-L1 ligand binds the PD-1 transmembrane receptor and inhibits T cell activation. PD-L1 was discovered following a search for novel B7 protein homologs and was later shown to be expressed by antigen presenting cells, activated T cells, and tissues including heart, and lung.
-------------------	---

Immunogen	Polyclonal antibody is produced by immunizing animals with a synthetic peptide of PD1.
------------------	--

Purification	Polyclonal antibody was purified by Protein A affinity chromatography.
---------------------	--

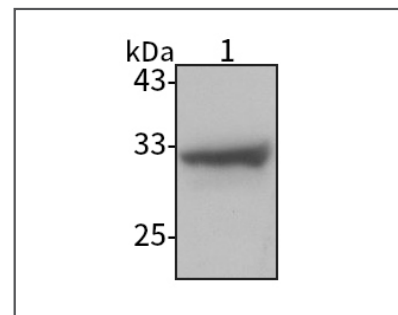
Anti-PD1 Rabbit pAb



WL04252

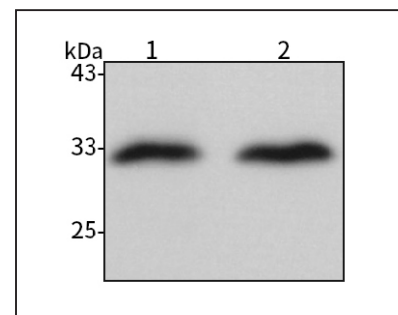
For Research Use Only. Not For Use In Diagnostic Procedures

Product Images



Western blot-PD1 pAb

Lane 1: Human THP-1 cell lysate 20μg
 Separation gel: 11% polyacrylamide
 Electrophoresis: 100V, 4°C, 3h
 Transmembrane: 100V, 4°C, 1h
 Blocking: 5% w/v nonfat dry milk, 1 × TBST, at RT with gentle shaking
 Primary antibody: 1:1000 in blocking buffer, 4°C, overnight
 Secondary antibody-HRP: 1:7000 in blocking buffer, RT, 45min
 Visualization: ECL



Western blot-PD1 pAb

Lane 1: Mouse spleen tissue lysate 15μg
 Lane 2: Rat spleen tissue lysate 15μg
 Separation gel: 11% polyacrylamide
 Electrophoresis: 100V, 4°C, 3h
 Transmembrane: 100V, 4°C, 1h
 Blocking: 5% w/v nonfat dry milk, 1 × TBST, at RT with gentle shaking
 Primary antibody: 1:1000 in blocking buffer, 4°C, overnight
 Secondary antibody-HRP: 1:7000 in blocking buffer, RT, 45min
 Visualization: ECL