

Anti-Leptin Rabbit pAb



WL00701

For Research Use Only. Not For Use In Diagnostic Procedures

Product Information

Product name	Anti-Leptin Rabbit pAb	
Source	Rabbit	
Species reactivity	Human, Mouse, Rat	
Tested applications	WB	1:1000-1:2000
	IHC, IF	1:500
Cellular localization	Secreted.	
Pack size	50/100/200/500/1000µl	
Storage	Store at -20°C. Avoid freeze/thaw cycles.	
Storage buffer	Supplied in 20 mM phosphate (pH 7.5), 150 mM NaCl, 100 µg/ml	
	BSA, 50% glycerol and less than 0.02% sodium azide	

General Information

Background	Leptin is a protein secreted by white adipocytes into the circulation, playing an important role in regulating energy homeostasis. Leptin mainly acts on neurons in the basal part of the hypothalamus, regulating food intake, thermogenesis, and blood glucose levels. It also has multiple endocrine functions, participating in the regulation of immune and inflammatory responses, hematopoiesis, angiogenesis, reproduction, bone formation, and wound healing. The mutation of this gene and its regulatory region leads to severe obesity and pathological obesity with gonadal dysfunction in human patients.
Immunogen	Polyclonal antibody is produced by immunizing animals with a synthetic peptide of Leptin.
Purification	Polyclonal antibody was purified by Protein A affinity chromatography.

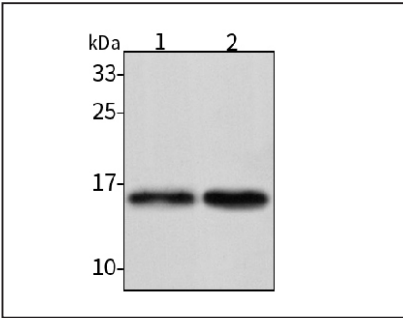
Anti-Leptin Rabbit pAb



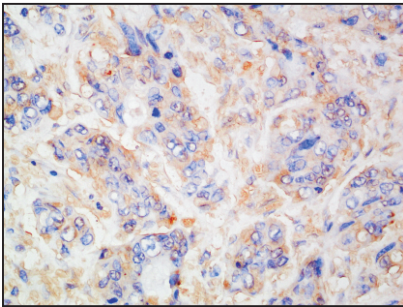
WL00701

For Research Use Only. Not For Use In Diagnostic Procedures

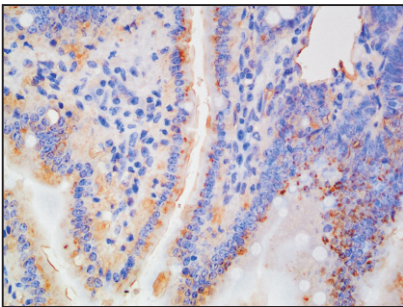
Product Images



Western blot-Anti-Leptin pAb
Lane 1: Mouse fat tissue lysate
Lane 2: Rat fat tissue lysate
All lanes: Anti-Leptin at 1:1000 dilution
Lysates/proteins at 20-50 µg per lane
Predicted band size: 19 kDa
Observed band size: 15 kDa



Immunohistochemistry-Anti-Leptin pAb
Immunohistochemical analysis of paraffin-embedded human colon cancer using anti-Leptin Rabbit Antibody at 1:500 dilution.
Perform heat mediated antigen retrieval with Tris-EDTA buffer pH 9.0



Immunohistochemistry-Anti-Leptin pAb
Immunohistochemical analysis of paraffin-embedded mouse small intestine using anti-Leptin Rabbit Antibody at 1:500 dilution.
Perform heat mediated antigen retrieval with Tris-EDTA buffer pH 9.0

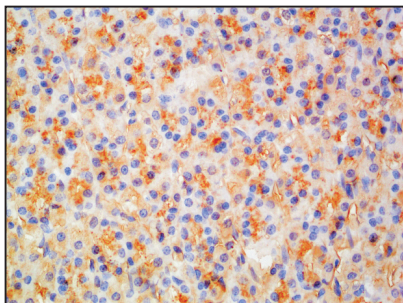
Anti-Leptin Rabbit pAb



WL00701

For Research Use Only. Not For Use In Diagnostic Procedures

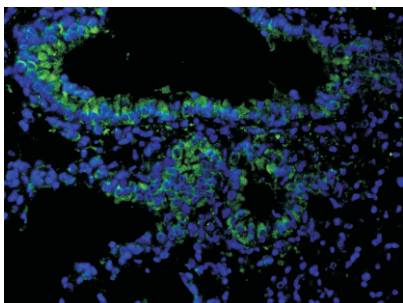
Product Information



Immunohistochemistry-Anti-Leptin pAb

Immunohistochemical analysis of paraffin-embedded rat stomach using anti-Leptin Rabbit Antibody at 1:500 dilution.

Perform heat mediated antigen retrieval with Tris-EDTA buffer pH 9.0



Immunofluorescence-Anti-Leptin pAb

Immunofluorescence analysis of paraffin-embedded mouse lung using anti-Leptin Rabbit Antibody at 1:500 dilution.

Perform heat mediated antigen retrieval with Tris-EDTA buffer pH 9.0