

Anti- ALDH1L1 Rabbit pAb



WLA0421

For Research Use Only. Not For Use In Diagnostic Procedures

Product Information

Product name	Anti- ALDH1L1 Rabbit pAb	
Source	Rabbit	
Species reactivity	Human, Mouse, Rat	
Tested applications	WB	1:500-1:1000
	IHC, IF	1:50-1:200

Cellular localization Cytoplasm.

Pack size 50/100/200/500/1000μl

Storage Store at -20°C. **Avoid freeze/thaw cycles.**

Storage buffer Supplied in 20 mM phosphate (pH 7.5), 150 mM NaCl, 100 μg/ml BSA, 50% glycerol and less than 0.02% sodium azide

General Information

Background AldH1L1, a member of the aldehyde dehydrogenase 1 family, belongs to the aldehyde dehydrogenase family of proteins and is responsible for formic acid oxidation in the body. The loss of ALDH1L1 is associated with reduced apoptosis, increased cell movement, and cancer progression. ALDH1L1 catalyzes the conversion of 10 methyltetrahydrofolate and nicotinamide adenine dinucleotide phosphate (NADP⁺), and converts water into tetrahydrofolate, NADPH, NADPH, and carbon dioxide.

Immunogen Polyclonal antibody is produced by immunizing animals with a synthetic peptide of ALDH1L1.

Purification Polyclonal antibody was purified by immunogen affinity chromatography.

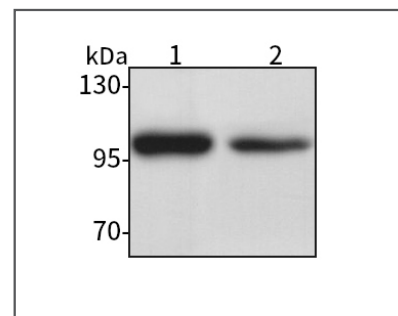
Anti- ALDH1L1 Rabbit pAb



WLA0421

For Research Use Only. Not For Use In Diagnostic Procedures

Product Images



Western blot-Anti- ALDH1L1 pAb

Lane 1: Human THP-1 cell lysate

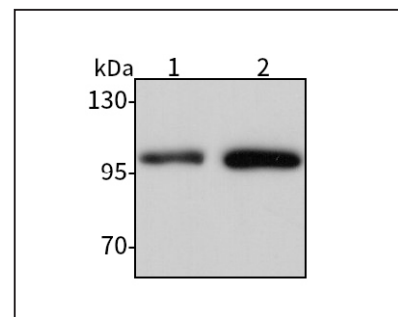
Lane 2: Human Hela cell lysate

All lanes: Anti- ALDH1L1 at 1:1000 dilution

Lysates/proteins at 20-50 μg per lane.

Predicted band size: 100 kDa

Observed band size: 100 kDa



Western blot-Anti- ALDH1L1 pAb

Lane 1: Mouse stomach tissue lysate

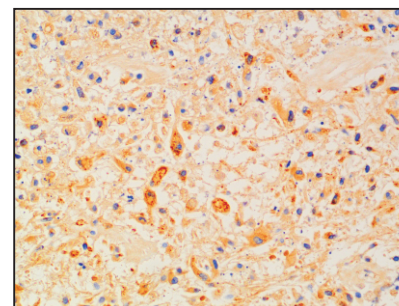
Lane 2: Rat kidney tissue lysate

All lanes: Anti- ALDH1L1 at 1:1000 dilution

Lysates/proteins at 20-50 μg per lane.

Predicted band size: 100 kDa

Observed band size: 100 kDa



Immunohistochemistry-Anti- ALDH1L1 pAb

Immunohistochemical analysis of paraffin-embedded human brain glioma using anti- ALDH1L1 Rabbit Antibody at 1:100 dilution.

Perform heat mediated antigen retrieval with Tris-EDTA buffer pH 9.0

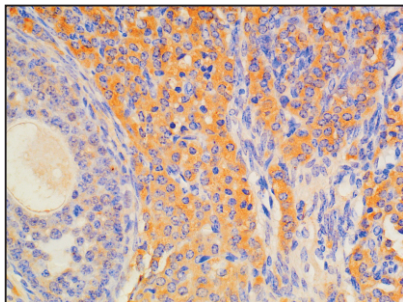
Anti- ALDH1L1 Rabbit pAb



WLA0421

For Research Use Only. Not For Use In Diagnostic Procedures

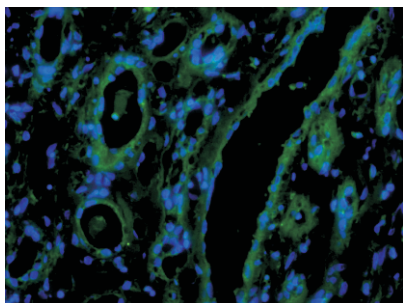
Product Information



Immunohistochemistry-Anti- ALDH1L1 pAb

Immunohistochemical analysis of paraffin-embedded mouse ovary using anti- ALDH1L1 Rabbit Antibody at 1:100 dilution.

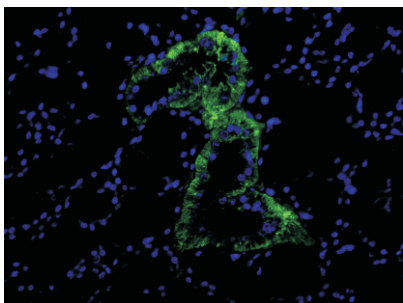
Perform heat mediated antigen retrieval with Tris-EDTA buffer pH 9.0



Immunofluorescence-Anti-ALDH1L1 pAb

Immunofluorescence analysis of paraffin-embedded human renal clear cell carcinoma using anti- ALDH1L1 Rabbit Antibody at 1:100 dilution.

Perform heat mediated antigen retrieval with Tris-EDTA buffer pH 9.0



Immunofluorescence-Anti-ALDH1L1 pAb

Immunofluorescence analysis of paraffin-embedded rat salivary gland using anti- ALDH1L1 Rabbit Antibody at 1:100 dilution.

Perform heat mediated antigen retrieval with Tris-EDTA buffer pH 9.0