

Anti-CD11b/Integrin  $\alpha$ M Rabbit pAb

WL01193

For Research Use Only. Not For Use In Diagnostic Procedures

## Product Information

<b>Product name</b>	Anti-CD11b/Integrin $\alpha$ M Rabbit pAb	
<b>Source</b>	Rabbit	
<b>Species reactivity</b>	Human, Mouse, Rat	
<b>Tested applications</b>	WB	1:1000-1:2000
	IHC	1:500
	IF	1:500
<b>Cellular localization</b>	Membrane	
<b>Pack size</b>	50/100/200/500/1000 $\mu$ l	
<b>Storage</b>	Store at -20°C. <b>Avoid freeze/thaw cycles.</b>	
<b>Storage buffer</b>	Supplied in 20 mM phosphate (pH 7.5), 150 mM NaCl, 100 $\mu$ g/ml	
	BSA, 50% glycerol and less than 0.02% sodium azide	

## General Information

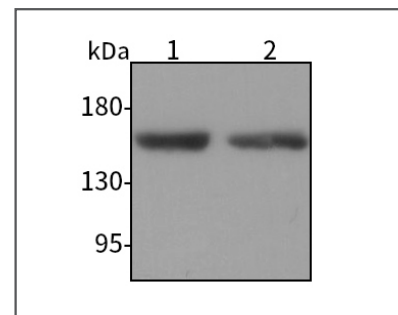
<b>Background</b>	Integrin $\alpha$ M (CD11b) is a cell adhesion molecule that acts as a receptor for cell surface ligands such as intracellular adhesion molecules (ICAMs) or soluble ligands. Integrins are heterodimeric proteins that contain an $\alpha$ chain and $\beta$ chain. Integrin $\alpha$ M combines with the Integrin $\beta$ 2 to form a leukocyte-specific integrin referred to as macrophage receptor 1 (Mac-1), or inactivated-C3b (iC3b) receptor 3 (CR3). Integrin $\alpha$ M / $\beta$ 2 is important in the adherence of neutrophils and monocytes to stimulated endothelium, and also in the phagocytosis of complement coated particles.
<b>Immunogen</b>	Polyclonal antibody is produced by immunizing animals with a synthetic peptide of CD11b/Integrin $\alpha$ M.
<b>Purification</b>	Polyclonal antibody was purified by protein A affinity chromatography.

Anti-CD11b/Integrin  $\alpha$ M Rabbit pAb

WL01193

For Research Use Only. Not For Use In Diagnostic Procedures

## Product Images

Western blot-Anti-CD11b/Integrin  $\alpha$ M pAb

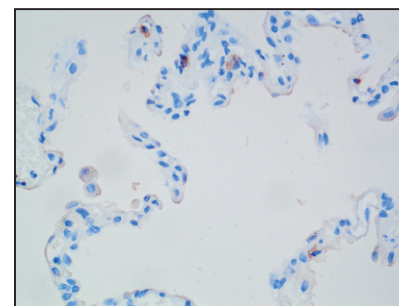
Lane 1: Mouse spleen cell lysate

Lane 2: Rat spleen cell lysate

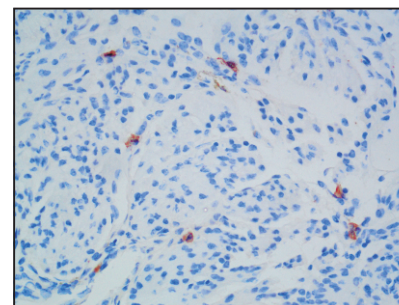
All lanes: Anti-CD11b/Integrin  $\alpha$ M at 1:1000 dilutionLysates/proteins at 20-50  $\mu$ g per lane.

Predicted band size: 127 kDa

Observed band size: 170 kDa

Immunohistochemistry-Anti-CD11b/Integrin  $\alpha$ M pAbImmunohistochemical analysis of paraffin-embedded human lung using anti-CD11b/Integrin  $\alpha$ M Rabbit Antibody at 1:500 dilution.

Perform heat mediated antigen retrieval with Tris-EDTA buffer pH 9.0

Immunohistochemistry-Anti-CD11b/Integrin  $\alpha$ M pAbImmunohistochemical analysis of paraffin-embedded mouse uterus using anti-CD11b/Integrin  $\alpha$ M Rabbit Antibody at 1:500 dilution.

Perform heat mediated antigen retrieval with Tris-EDTA buffer pH 9.0

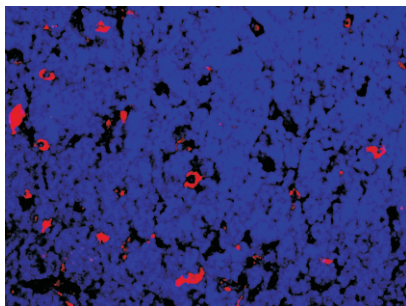
# Anti-CD11b/Integrin $\alpha$ M Rabbit pAb



WL01193

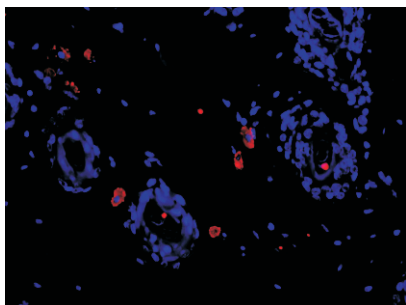
For Research Use Only. Not For Use In Diagnostic Procedures

## Product Information



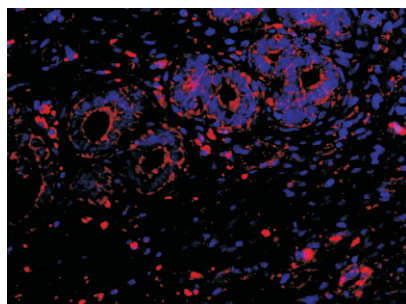
### Immunofluorescence-Anti-CD11b/Integrin $\alpha$ M pAb

Immunofluorescence analysis of paraffin-embedded mouse thymus using anti-CD11b/Integrin  $\alpha$ M Rabbit Antibody at 1:500 dilution.  
Perform heat mediated antigen retrieval with Tris-EDTA buffer pH 9.0



### Immunofluorescence-Anti-CD11b/Integrin $\alpha$ M pAb

Immunofluorescence analysis of paraffin-embedded rat skin using anti-CD11b/Integrin  $\alpha$ M Rabbit Antibody at 1:500 dilution.  
Perform heat mediated antigen retrieval with Tris-EDTA buffer pH 9.0



### Immunofluorescence-Anti-CD11b/Integrin $\alpha$ M pAb

Immunofluorescence analysis of paraffin-embedded rat uterus using anti-CD11b/Integrin  $\alpha$ M Rabbit Antibody at 1:500 dilution.  
Perform heat mediated antigen retrieval with Tris-EDTA buffer pH 9.0