

## Anti-Progesterone Receptor Rabbit pAb



WL02611

For Research Use Only. Not For Use In Diagnostic Procedures

## Product Information

<b>Product name</b>	Anti-Progesterone Receptor Rabbit pAb	
<b>Source</b>	Rabbit	
<b>Species reactivity</b>	Human , Mouse, Rat	
<b>Tested applications</b>	WB	1:500-1:1000
	IHC	1:200
<b>Cellular localization</b>	Nucleus. Cytoplasm	
<b>Pack size</b>	50/100/200/500/1000μl	
<b>Storage</b>	Store at -20°C. <b>Avoid freeze/thaw cycles.</b>	
<b>Storage buffer</b>	Supplied in 20 mM phosphate (pH 7.5), 150 mM NaCl, 100 μg/ml	
	BSA, 50% glycerol and less than 0.02% sodium azide	

## General Information

<b>Background</b>	The effects of progesterone are mediated by two functionally different isoforms of the progesterone receptor (PR), PR-A and PR-B, which are transcribed from distinct, estrogen inducible promoters within a single copy of the PR gene. Both PR-A and PR-B are ligand activated, but differ in their relative ability to activate target gene transcription. An inhibitory domain (ID), which maps to the amino terminus of the receptor, exists within both PR isoforms. Interestingly, the ID is functionally active only in PR-A and is necessary for steroid hormone transrepression by PR-A, suggesting that PR-A and PR-B may have different conformations in the cell.
<b>Immunogen</b>	Polyclonal antibody is produced by immunizing animals with a synthetic peptide of Progesterone Receptor.
<b>Purification</b>	Polyclonal antibody was purified by immunogen affinity chromatography.

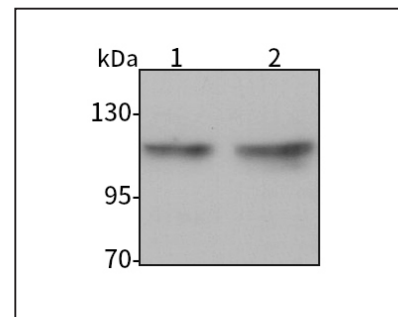
## Anti-Progesterone Receptor Rabbit pAb



WL02611

For Research Use Only. Not For Use In Diagnostic Procedures

## Product Images



Western blot-Anti-Progesterone Receptor pAb

Lane 1: Mouse testis tissue lysate

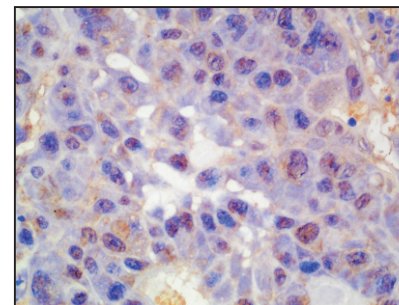
Lane 2: Rat testis tissue lysate

All lanes: Anti-Progesterone Receptor at 1:1000 dilution

Lysates/proteins at 20-50 μg per lane.

Predicted band size: 99 kDa

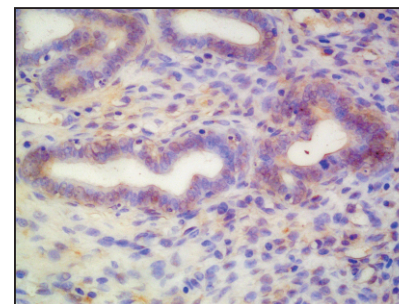
Observed band size: 118 kDa



Immunohistochemistry-Anti-Progesterone Receptor pAb

Immunohistochemical analysis of paraffin-embedded rat placenta using anti-Progesterone Receptor Rabbit Antibody at 1:200 dilution.

Perform heat mediated antigen retrieval with Tris-EDTA buffer pH 9.0



Immunohistochemistry-Anti-Progesterone Receptor pAb

Immunohistochemical analysis of paraffin-embedded rat uterus using anti-Progesterone Receptor Rabbit Antibody at 1:200 dilution.

Perform heat mediated antigen retrieval with Tris-EDTA buffer pH 9.0