

## Anti-RAP1/TERF2IP Rabbit pAb



WL04882

For Research Use Only. Not For Use In Diagnostic Procedures

## Product Information

<b>Product name</b>	Anti-RAP1/TERF2IP Rabbit pAb
<b>Source</b>	Rabbit
<b>Species reactivity</b>	Human, Mouse, Rat
<b>Tested applications</b>	WB 1:1000-1:2000
<b>Cellular localization</b>	Secreted and Cell membrane
<b>Pack size</b>	50/100/200/500/1000μl
<b>Storage</b>	Store at -20°C. <b>Avoid freeze/thaw cycles.</b>
<b>Storage buffer</b>	Supplied in 20 mM phosphate (pH 7.5), 150 mM NaCl, 100 μg/ml BSA, 50% glycerol and less than 0.02% sodium azide

## General Information

<b>Background</b>	Enables G-rich strand telomeric DNA binding activity and phosphatase binding activity. Involved in several processes, including positive regulation of NIK/NF-kappaB signaling; regulation of nucleobase-containing compound metabolic process; and regulation of protein modification process. Located in chromosome, telomeric region; cytosol; and nuclear body. Part of shelterin complex.
-------------------	--

<b>Immunogen</b>	Polyclonal antibody is produced by immunizing animals with a synthetic peptide of RAP1/TERF2IP.
------------------	---

<b>Purification</b>	Polyclonal antibody was purified by Protein A affinity chromatography.
---------------------	--

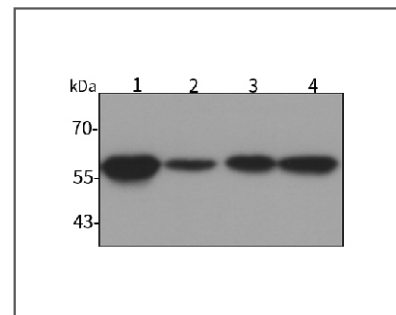
## Anti-RAP1/TERF2IP Rabbit pAb



WL04882

For Research Use Only. Not For Use In Diagnostic Procedures

## Product Images



Western blot-Anti-RAP1/TERF2IP pAb

Lane 1: Human Hela cell lysate

Lane 2: Human HEK-293 cell lysate

Lane 3: Human HCT116 cell lysate

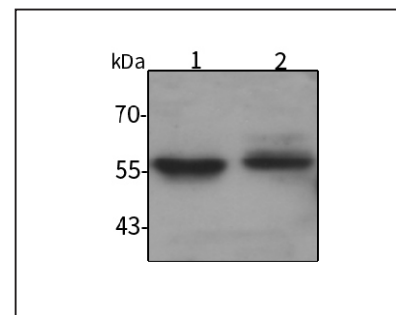
Lane 4: Human A549 cell lysate

All lanes: Anti-RAP1/TERF2IP at 1:1000 dilution

Lysates/proteins at 20-50 μg per lane.

Predicted band size: 44 kDa

Observed band size: 55 kDa



Western blot-Anti-RAP1/TERF2IP pAb

Lane 1: Mouse liver tissue lysate

Lane 2: Rat lung tissue lysate

All lanes: Anti-RAP1/TERF2IP at 1:1000 dilution

Lysates/proteins at 20-50 μg per lane.

Predicted band size: 44 kDa

Observed band size: 55 kDa