

Anti-Integrin alpha V/ITGAV Rabbit pAb



WL04866

For Research Use Only. Not For Use In Diagnostic Procedures

Product Information

Product name	Anti-Integrin alpha V/ITGAV Rabbit pAb		
Source	Rabbit		
Species reactivity	Human, Mouse, Rat		
Tested applications	WB	1:500-1:1000	
Cellular localization	Secreted and Cell membrane		
Pack size	50/100/200/500/1000μl		
Storage	Store at -20°C. Avoid freeze/thaw cycles.		
Storage buffer	Supplied in 20 mM phosphate (pH 7.5), 150 mM NaCl, 100 μg/ml BSA, 50% glycerol and less than 0.02% sodium azide		

General Information

Background	The product of this gene belongs to the integrin alpha chain family. Integrins are heterodimeric integral membrane proteins composed of an alpha subunit and a beta subunit that function in cell surface adhesion and signaling. The encoded preproprotein is proteolytically processed to generate light and heavy chains that comprise the alpha V subunit. This subunit associates with beta 1, beta 3, beta 5, beta 6 and beta 8 subunits. The heterodimer consisting of alpha V and beta 3 subunits is also known as the vitronectin receptor. This integrin may regulate angiogenesis and cancer progression. Alternative splicing results in multiple transcript variants. Note that the integrin alpha 5 and integrin alpha V subunits are encoded by distinct genes.
Immunogen	Polyclonal antibody is produced by immunizing animals with a synthetic peptide of Integrin alpha V/ITGAV.
Purification	Polyclonal antibody was purified by immunogen affinity chromatography.

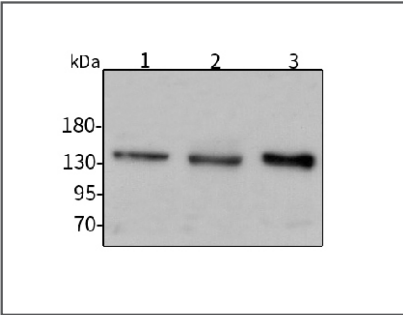
Anti-Integrin alpha V/ITGAV Rabbit pAb



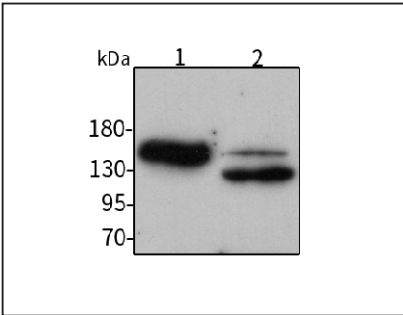
WL04866

For Research Use Only. Not For Use In Diagnostic Procedures

Product Images



Western blot-Anti-Integrin alpha V/ITGAV pAb
Lane 1: Human Hela cell lysate
Lane 2: Human HEK-293 cell lysate
Lane 3: Human HCT116 cell lysate
All lanes: Anti-Integrin alpha V/ITGAV at 1:1000 dilution
Lysates/proteins at 20-50 µg per lane.
Predicted band size: 116 kDa
Observed band size: 116-135 kDa



Western blot-Anti-Integrin alpha V/ITGAV pAb
Lane 1: Mouse kidney tissue lysate
Lane 2: Rat liver tissue lysate
All lanes: Anti-Integrin alpha V/ITGAV at 1:1000 dilution
Lysates/proteins at 20-50 µg per lane.
Predicted band size: 116 kDa
Observed band size: 116-135 kDa