

## Anti-SNAP 25 Rabbit pAb



WL03065

For Research Use Only. Not For Use In Diagnostic Procedures

## Product Information

|                              |  |               |  |
|------------------------------|--|---------------|--|
| <b>Product name</b>          | Anti-SNAP 25 Rabbit pAb  |               |  |
| <b>Source</b>                | Rabbit   |               |  |
| <b>Species reactivity</b>    | Human, Mouse, Rat  |               |  |
| <b>Tested applications</b>   | WB   | 1:1000-1:2000 |  |
|                              | IF   | 1:500         |  |
| <b>Cellular localization</b> | Cytoplasm > perinuclear region. Cell membrane.<br>Cell junction, synapse > synaptosome |               |  |
| <b>Pack size</b>             | 50/100/200/500/1000µl  |               |  |
| <b>Storage</b>               | Store at -20°C. <b>Avoid freeze/thaw cycles.</b>                                       |               |  |
| <b>Storage buffer</b>        | Supplied in 20 mM phosphate (pH 7.5), 150 mM NaCl, 100 µg/ml                           |               |  |
|                              | BSA, 50% glycerol and less than 0.02% sodium azide                                     |               |  |

## General Information

|                     |   |
|---------------------|---|
| <b>Background</b>   | SNAP-25 is a component of the trans-SNARE complex, which is proposed to account for the specificity of membrane fusion and to directly execute fusion by forming a tight complex that brings the synaptic vesicle and plasma membranes together. This complex is responsible for exocytosis of the neurotransmitter $\gamma$ -aminobutyric acid (GABA). Neurotransmitter release is inhibited by proteolysis of SNAP25 by botulinum toxins A and E. SNAP25 plays a secondary role as a Q-SNARE involved in endosome fusion; the protein is associated with genetic susceptibility to attention-deficit hyperactivity disorder (ADHD). |
| <b>Immunogen</b>    | Polyclonal antibody is produced by immunizing animals with a synthetic peptide of SNAP 25.  |
| <b>Purification</b> | Polyclonal antibody was purified by Protein A affinity chromatography.  |

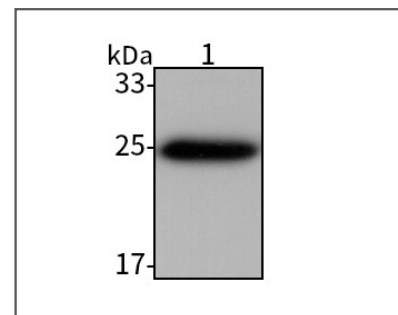
## Anti-SNAP 25 Rabbit pAb



WL03065

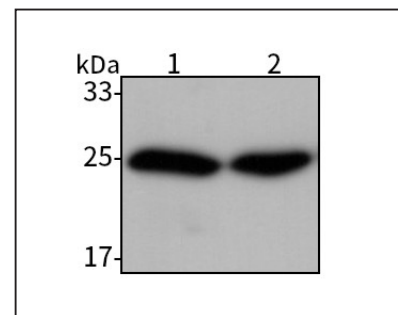
For Research Use Only. Not For Use In Diagnostic Procedures

## Product Images



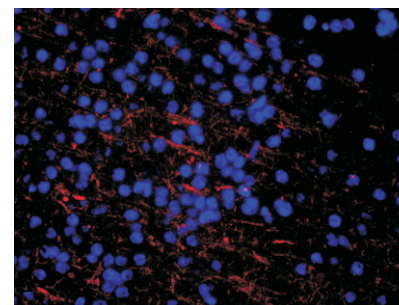
## Western blot-Anti-SNAP 25 pAb

Lane 1: Human SH-SY5Y cell lysate  
 All lanes: Anti-SNAP 25 at 1:1000 dilution  
 Lysates/proteins at 20-50 µg per lane.  
 Predicted band size: 23 kDa  
 Observed band size: 25 kDa



## Western blot-Anti-SNAP 25 pAb

Lane 1: Mouse brain tissue lysate  
 Lane 2: Rat brain tissue lysate  
 All lanes: Anti-SNAP 25 at 1:1000 dilution  
 Lysates/proteins at 20-50 µg per lane.  
 Predicted band size: 23 kDa  
 Observed band size: 25 kDa



## Immunofluorescence-Anti-SNAP 25 pAb

Immunofluorescence analysis of paraffin-embedded mouse brain using anti-SNAP 25 Rabbit Antibody at 1:500 dilution.  
 Perform heat mediated antigen retrieval with Tris-EDTA buffer pH 9.0

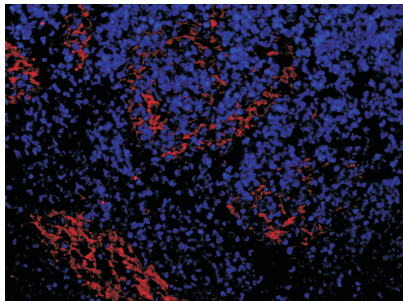
## Anti-SNAP 25 Rabbit pAb



WL03065

For Research Use Only. Not For Use In Diagnostic Procedures

## Product Information



### Immunofluorescence-Anti-SNAP 25 pAb

Immunofluorescence analysis of paraffin-embedded rat brain using anti-SNAP 25 Rabbit Antibody at 1:500 dilution.

Perform heat mediated antigen retrieval with Tris-EDTA buffer pH 9.0