

Anti-TLR2 Rabbit pAb



WL01747

For Research Use Only. Not For Use In Diagnostic Procedures

Product Information

Product name	Anti-TLR2 Rabbit pAb	
Source	Rabbit	
Species reactivity	Human, Mouse, Rat	
Tested applications	Western blot	1:500-1:1000
<i>*Suggested working dilutions are given as a guide only. It is recommended that the user titrates the product for use in their own experiment using appropriate negative and positive controls.</i>		
Pack size	50/100/200/500/1000μl	
Storage	Store at -20°C. Avoid freeze/thaw cycles.	
Storage buffer	Supplied in 20 mM phosphate (pH 7.5), 150 mM NaCl, 100 μg/ml BSA, 50% glycerol and less than 0.02% sodium azide	

General Information

Background	Members of the Toll-like receptor (TLR) family, named for the closely related Toll receptor in <i>Drosophila</i> , play a pivotal role in innate immune responses. TLRs recognize conserved motifs found in various pathogens and mediate defense responses. Toll-like receptor 2 (TLR2) is expressed on the surface of monocytes and macrophages and can heterodimerize with TLR1 or TLR6, enabling responses to a variety of pathogen-associated molecular signals including lipopeptides and peptidoglycan. TLR6 is highly homologous to TLR1, sharing greater than 65% sequence identity, and, like other members of TLR family, it induces NFκB signaling upon activation.
Immunogen	Polyclonal antibody is produced by immunizing animals with a synthetic peptide of TLR2.
Purification	Polyclonal antibody was purified by immunogen affinity chromatography.

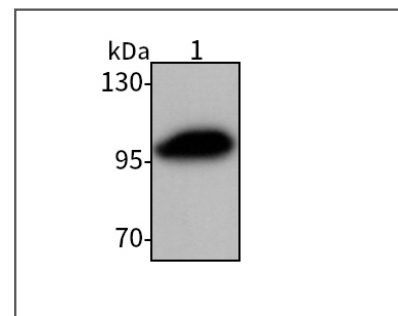
Anti-TLR2 Rabbit pAb



WL01747

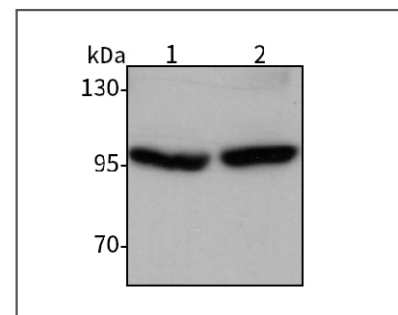
For Research Use Only. Not For Use In Diagnostic Procedures

Product Images



Western blot-Anti-TLR2 pAb

Lane 1: Human THP-1 cell lysate
 All lanes: Anti-TLR2 at 1:1000 dilution
 Lysates/proteins at 20-50 μg per lane.
 Predicted band size: 90 kDa
 Observed band size: 90-100 kDa



Western blot-Anti-TLR2 pAb

Lane 1: Mouse spleen tissue lysate
 Lane 2: Rat spleen tissue lysate
 All lanes: Anti-TLR2 at 1:1000 dilution
 Lysates/proteins at 20-50 μg per lane.
 Predicted band size: 90 kDa
 Observed band size: 90-100 kDa