

Anti-SOX10 Rabbit pAb



WL05169

For Research Use Only. Not For Use In Diagnostic Procedures

Product Information

Product name	Anti-SOX10 Rabbit pAb	
Source	Rabbit	
Species reactivity	Human, Mouse, Rat	
Tested applications	WB	1:500-1:1000
	IHC, IF	1:50-1:200
Cellular localization	Cytoplasm. Nucleus.	

Pack size 50/100/200/500/1000µl

Storage Store at -20°C. **Avoid freeze/thaw cycles.**

Storage buffer Supplied in 20 mM phosphate (pH 7.5), 150 mM NaCl, 100 µg/ml BSA, 50% glycerol and less than 0.02% sodium azide

General Information

Background Sox10 is a transcription factor that has a crucial role in complex signalling pathways regulating central nervous system and neural crest development. This protein acts as a nucleocytoplasmic shuttle protein and is important for neural crest and peripheral nervous system development.

Immunogen Polyclonal antibody is produced by immunizing animals with a synthetic peptide of SOX10.

Purification Polyclonal antibody was purified by immunogen affinity chromatography. affinity chromatography.

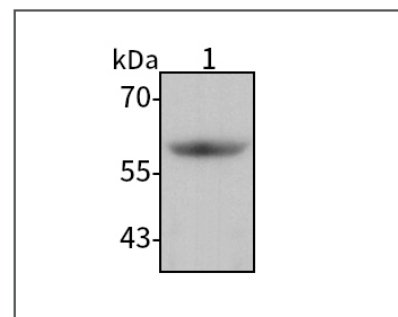
Anti-SOX10 pAb



WL05169

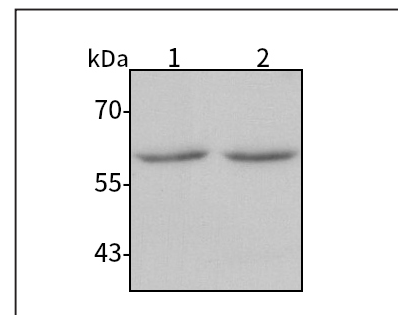
For Research Use Only. Not For Use In Diagnostic Procedures

Product Images



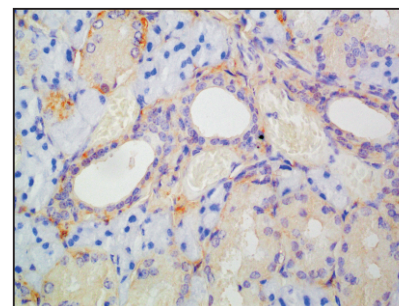
Western blot-Anti-SOX10 pAb

Lane 1: Human SH-SY5Y cell lysate
All lanes: Anti-SOX10 at 1:1000 dilution
Lysates/proteins at 20-50 µg per lane.
Predicted band size: 49 kDa
Observed band size: 50-60 kDa



Western blot-Anti-SOX10 pAb

Lane 1: Mouse brain tissue lysate
Lane 2: Rat brain tissue lysate
All lanes: Anti-SOX10 at 1:1000 dilution
Lysates/proteins at 20-50 µg per lane.
Predicted band size: 49 kDa
Observed band size: 50-60 kDa



Immunohistochemistry-Anti-SOX10 pAb

Immunohistochemical analysis of paraffin-embedded mouse salivary gland using anti-SOX10 Rabbit Antibody at 1:100 dilution.
Perform heat mediated antigen retrieval with Tris-EDTA buffer pH 9.0

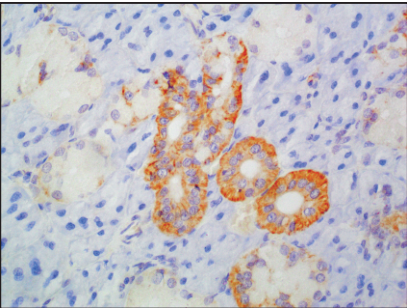
Anti-SOX10 Rabbit pAb



WL05169

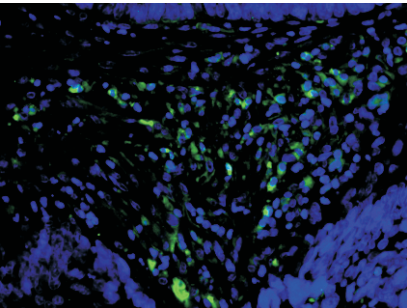
For Research Use Only. Not For Use In Diagnostic Procedures

Product Information



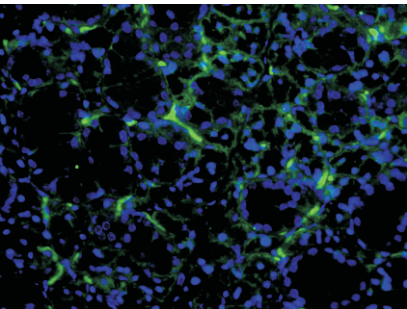
Immunohistochemistry-Anti-SOX10 pAb

Immunohistochemical analysis of paraffin-embedded rat salivary gland using anti-SOX10 Rabbit Antibody at 1:100 dilution.
Perform heat mediated antigen retrieval with Tris-EDTA buffer pH 9.0



Immunofluorescence-Anti-SOX10 pAb

Immunofluorescence analysis of paraffin-embedded human colon cancer using anti-SOX10 Rabbit Antibody at 1:100 dilution.
Perform heat mediated antigen retrieval with Tris-EDTA buffer pH 9.0



Immunofluorescence-Anti-SOX10 pAb

Immunofluorescence analysis of paraffin-embedded mouse salivary gland using anti-SOX10 Rabbit Antibody at 1:100 dilution.
Perform heat mediated antigen retrieval with Tris-EDTA buffer pH 9.0

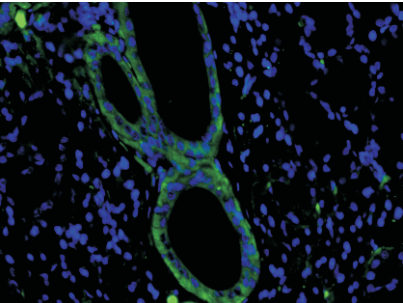
Anti-SOX10 Rabbit pAb



WL05169

For Research Use Only. Not For Use In Diagnostic Procedures

Product Information



Immunofluorescence-Anti-SOX10 pAb

Immunofluorescence analysis of paraffin-embedded rat salivary gland using anti-SOX10 Rabbit Antibody at 1:100 dilution.
Perform heat mediated antigen retrieval with Tris-EDTA buffer pH 9.0