

Anti-Survivin Rabbit pAb



WLH3488

For Research Use Only. Not For Use In Diagnostic Procedures

Product Information

| | | | |
|----------------------------|---|---------------|--|
| Product name | Anti-Survivin Rabbit pAb | | |
| Source | Rabbit | | |
| Species reactivity | Human, Mouse, Rat | | |
| Tested applications | Western blot | 1:1000-1:2000 | |
| | Immunohistochemistry | 1:100-1:400 | |
| | Immunofluorescence | 1:100-1:400 | |
| | <i>*Suggested working dilutions are given as a guide only. It is recommended that the user titrates the product for use in their own experiment using appropriate negative and positive controls.</i> | | |
| Pack size | 50/100/200/500/1000µl | | |
| Storage | Store at -20°C. Avoid freeze/thaw cycles. | | |
| Storage buffer | Supplied in 20 mM phosphate (pH 7.5), 150 mM NaCl, 100 µg/ml | | |
| | BSA, 50% glycerol and less than 0.02% sodium azide | | |

General Information

| | |
|---------------------|---|
| Background | Survivin is a 16 kDa anti-apoptotic protein highly expressed during fetal development and cancer cell malignancy. It is a member of the inhibitor of apoptosis (IAP) gene family, which encode negative regulatory proteins that prevent apoptotic cell death. IAP family members usually contain multiple baculovirus IAP repeat (BIR) domains, but this gene encodes proteins with only a single BIR domain. Survivin binds and inhibits caspase-3, controlling the checkpoint in the G2/M-phase of the cell cycle by inhibiting apoptosis and promoting cell division. |
| Immunogen | Polyclonal antibody is produced by immunizing animals with a synthetic peptide of Survivin. |
| Purification | Polyclonal antibody was purified by Protein A affinity chromatography. |

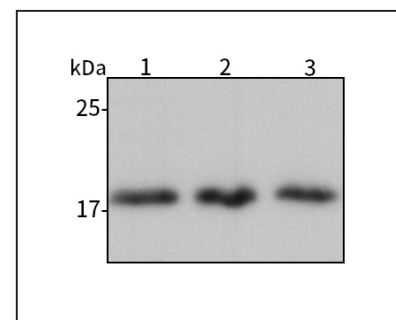
Anti-Survivin Rabbit pAb



WLH3488

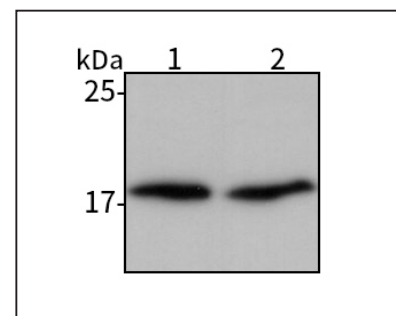
For Research Use Only. Not For Use In Diagnostic Procedures

Product Images



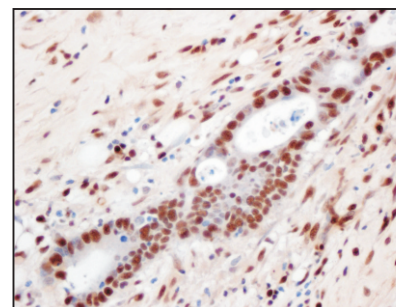
Western blot-Anti-Survivin pAb

Lane 1: Human Hela cell lysate 30µg
 Lane 2: Human Calu-3 cell lysate 30µg
 Lane 3: Human MDA-MB-231 cell lysate 30µg
 All lanes: Anti-Survivin at 1:1000 dilution
 Lysates/proteins at 20-50 µg per lane.
 Predicted band size: 16 kDa
 Observed band size: 18 kDa



Western blot-Anti-Survivin pAb

Lane 1: Mouse testis tissue lysate 30µg
 Lane 2: Rat testis tissue lysate 30µg
 All lanes: Anti-Survivin at 1:1000 dilution
 Lysates/proteins at 20-50 µg per lane.
 Predicted band size: 16 kDa
 Observed band size: 18 kDa



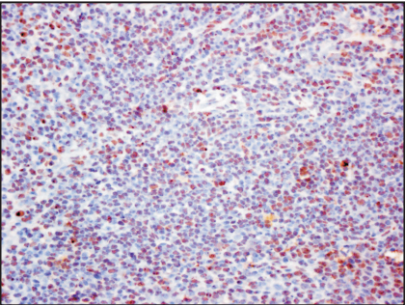
Immunohistochemistry-Anti-Survivin pAb

Sample: Human colon cancer tissue
 Antigen retrieval: pH 9.0 Tris-EDTA buffer
 Primary antibody: 1:200, 4°C, overnight
 Secondary antibody-Biotin: 1:150, 37°C, 1h
 Streptavidin-HRP: 1:200, 37°C, 30min
 Color Developing: DAB

Anti-Survivin Rabbit pAb

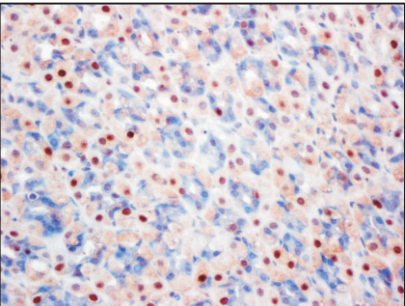
For Research Use Only. Not For Use In Diagnostic Procedures

Product Information



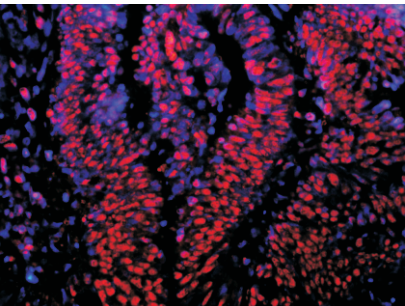
Immunohistochemistry-Anti-Survivin pAb

Sample: Mouse spleen tissue
Antigen retrieval: pH 9.0 Tris-EDTA buffer
Primary antibody: 1:200, 4°C, overnight
Secondary antibody-Biotin: 1:150, 37°C, 1h
Streptavidin-HRP: 1:200, 37°C, 30min
Color Developing: DAB



Immunohistochemistry-Anti-Survivin pAb

Sample: Rat stomach tissue
Antigen retrieval: pH 9.0 Tris-EDTA buffer
Primary antibody: 1:200, 4°C, overnight
Secondary antibody-Biotin: 1:150, 37°C, 1h
Streptavidin-HRP: 1:200, 37°C, 30min
Color Developing: DAB



Immunofluorescence-Anti-Survivin pAb

Sample: Human colon cancer tissue
Primary antibody: 1:200, 4°C, overnight
Secondary antibody-CY3: 1:200, at room temperature, 1h

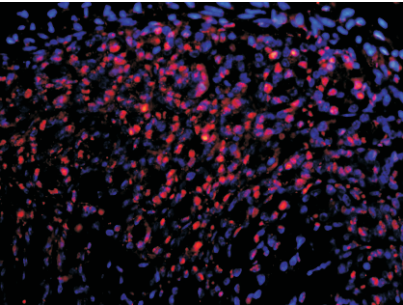


WLH3488

Anti-Survivin Rabbit pAb

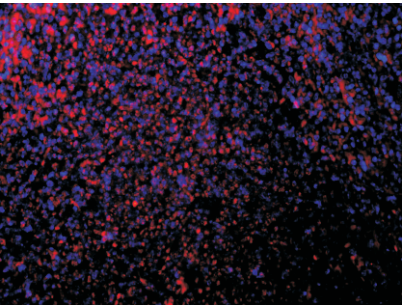
For Research Use Only. Not For Use In Diagnostic Procedures

Product Images



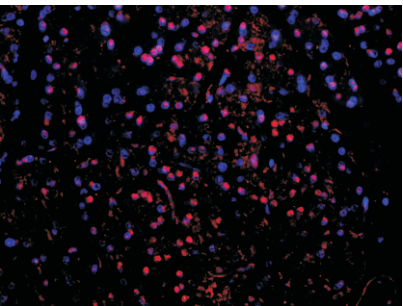
Immunofluorescence-Anti-Survivin pAb

Sample: Mouse stomach tissue
Primary antibody: 1:200, 4°C, overnight
Secondary antibody-CY3: 1:200, at room temperature, 1h



Immunofluorescence-Anti-Survivin pAb

Sample: Mouse spleen tissue
Primary antibody: 1:200, 4°C, overnight
Secondary antibody-CY3: 1:200, at room temperature, 1h



Immunofluorescence-Anti-Survivin pAb

Sample: Rat pancreas tissue
Primary antibody: 1:200, 4°C, overnight
Secondary antibody-CY3: 1:200, at room temperature, 1h



WLH3488