

Anti-P-YAP1 (phospho Y357) Rabbit pAb



WL05079

For Research Use Only. Not For Use In Diagnostic Procedures

Product Information

Product name Anti-P-YAP1 (phospho Y357) Rabbit pAb**Source** Rabbit**Species reactivity** Human, Mouse, Rat**Tested applications** WB 1:1000-1:2000

IHC 1:500

IF 1:500

Cellular localization Cytoplasm. Nucleus**Pack size** 50/100/200/500/1000µl**Storage** Store at -20°C. **Avoid freeze/thaw cycles.****Storage buffer** Supplied in 20 mM phosphate (pH 7.5), 150 mM NaCl, 100 µg/ml

BSA, 50% glycerol and less than 0.02% sodium azide

General Information

Background

Transcriptional regulator which can act both as a coactivator and a corepressor and is the critical downstream regulatory target in the Hippo signaling pathway that plays a pivotal role in organ size control and tumor suppression by restricting proliferation and promoting apoptosis. The core of this pathway is composed of a kinase cascade wherein MST1/MST2, in complex with its regulatory protein SAV1, phosphorylates and activates LATS1/2 in complex with its regulatory protein MOB1, which in turn phosphorylates and inactivates YAP1 oncoprotein and WWTR1/TAZ. Plays a key role to control cell proliferation in response to cell contact.

Immunogen

Polyclonal antibody is produced by immunizing animals with a synthetic peptide of P-YAP1 (phospho Y357) .

Purification

Polyclonal antibody was purified by Protein A affinity chromatography.

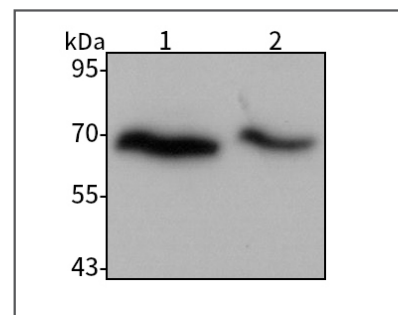
Anti-P-YAP1 (phospho Y357) Rabbit pAb



WL05079

For Research Use Only. Not For Use In Diagnostic Procedures

Product Images



Western blot-Anti-P-YAP1 (phospho Y357) pAb

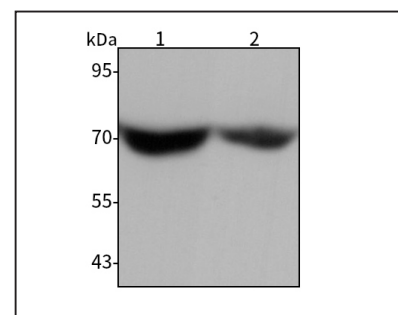
Lane 1: Human HEP-G2 cell lysate

Lane 2: Human Hela cell lysate

All lanes: Anti-P-YAP1 (phospho Y357) at 1:1000 dilution
Lysates/proteins at 20-50 µg per lane.

Predicted band size: 54 kDa

Observed band size: 65-75 kDa



Western blot-Anti-P-YAP1 (phospho Y357) pAb

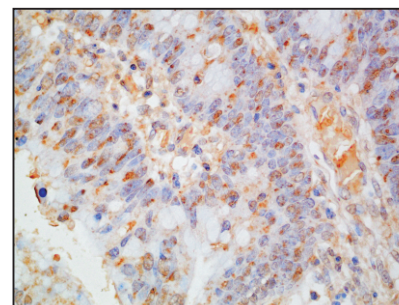
Lane 1: Mouse heart tissue lysate

Lane 2: Rat lung tissue lysate

All lanes: Anti-P-YAP1 (phospho Y357) at 1:1000 dilution
Lysates/proteins at 20-50 µg per lane.

Predicted band size: 54 kDa

Observed band size: 65-75 kDa



Immunohistochemistry-Anti-P-YAP1 (phospho Y357) pAb

Immunohistochemical analysis of paraffin-embedded human colon cancer using anti-P-YAP1 (phospho Y357) Rabbit Antibody at 1:500 dilution. Perform heat mediated antigen retrieval with Tris-EDTA buffer pH 9.0

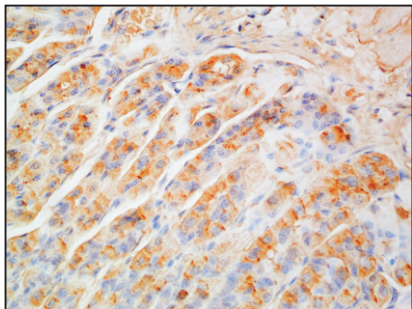
Anti-P-YAP1 (phospho Y357) Rabbit pAb



WL05079

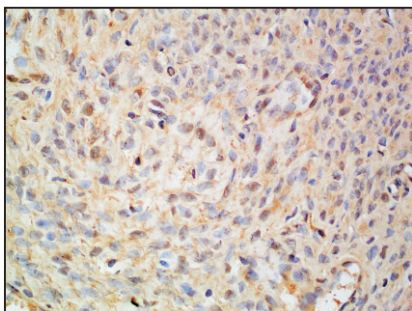
For Research Use Only. Not For Use In Diagnostic Procedures

Product Information



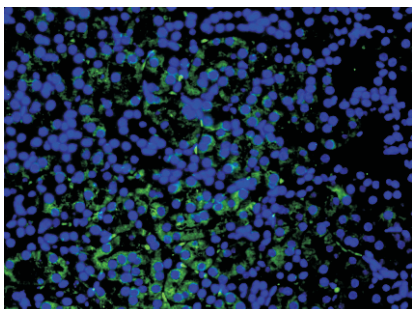
Immunohistochemistry-Anti-P-YAP1 (phospho Y357) pAb

Immunohistochemical analysis of paraffin-embedded mouse stomach using anti-P-YAP1 (phospho Y357) Rabbit Antibody at 1:500 dilution. Perform heat mediated antigen retrieval with Tris-EDTA buffer pH 9.0



Immunohistochemistry-Anti-P-YAP1 (phospho Y357) pAb

Immunohistochemical analysis of paraffin-embedded rat uterus using anti-P-YAP1 (phospho Y357) Rabbit Antibody at 1:500 dilution. Perform heat mediated antigen retrieval with Tris-EDTA buffer pH 9.0



Immunofluorescence-Anti-P-YAP1 (phospho Y357) pAb

Immunofluorescence analysis of paraffin-embedded mouse kidney using anti-P-YAP1 (phospho Y357) Rabbit Antibody at 1:500 dilution. Perform heat mediated antigen retrieval with Tris-EDTA buffer pH 9.0