



## Anti- P-PI3 Kinase p110 beta (Ser1070) Rabbit pAb

WLA0482

For Research Use Only. Not For Use In Diagnostic Procedures

## Product Information

<b>Product name</b>	Anti- P-PI3 Kinase p110 beta (Ser1070) Rabbit pAb	
<b>Source</b>	Rabbit	
<b>Species reactivity</b>	Human, Mouse, Rat	
<b>Tested applications</b>	WB	1:500-1:1000
	IHC, IF	1:50-1:200
<b>Cellular localization</b>	Cytoplasm. Nucleus.	
<b>Pack size</b>	50/100/200/500/1000μl	
<b>Storage</b>	Store at -20°C. <b>Avoid freeze/thaw cycles.</b>	
<b>Storage buffer</b>	Supplied in 20 mM phosphate (pH 7.5), 150 mM NaCl, 100 μg/ml	
	BSA, 50% glycerol and less than 0.02% sodium azide	

## General Information

<b>Background</b>	PIK3CB (phosphatidylinositol 4,5-diphosphate 3-kinase catalytic subunit β isoform) is also named PIK3C1, PI3K-BETA, P110BETA. It belongs to the 1070 amino acid protein of the PI3/PI4 kinase family. These kinases are important in signaling pathways involving receptors on the outer membrane of eukaryotic cells and are named after their catalytic subunits. Phosphatidylinositol 3-kinase (PI3KS) has been regarded as a signaling pathway in which participants regulate cell growth through activation in response to various mitotic stimuli. PI3KB is a part of the activation pathway in neutrophils, which bind immune complexes at the site of injury or infection. Alternative splicing can lead to multiple transcript variants.
<b>Immunogen</b>	Polyclonal antibody is produced by immunizing animals with a synthetic peptide of P-PI3 Kinase p110 beta (Ser1070) .
<b>Purification</b>	Polyclonal antibody was purified by immunogen affinity chromatography.

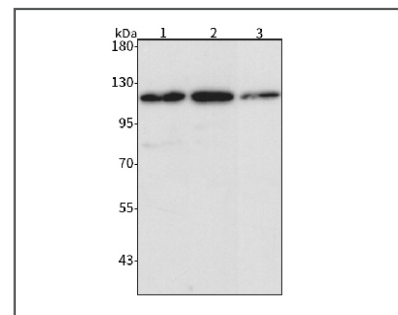


## Anti- P-PI3 Kinase p110 beta (Ser1070) Rabbit pAb

WLA0482

For Research Use Only. Not For Use In Diagnostic Procedures

## Product Images



Western blot-Anti- P-PI3 Kinase p110 beta (Ser1070) pAb

Lane 1: Human Hela cell lysate

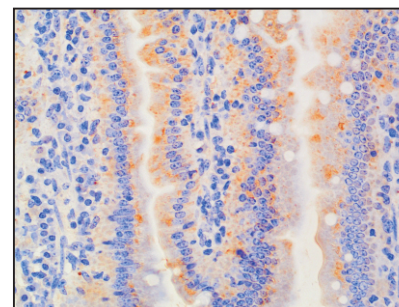
Lane 2: Human HEK293 cell lysate

Lane 3: Human HCT116 cell lysate

All lanes: Anti- P-PI3 Kinase p110 beta (Ser1070) at 1:1000 dilution  
Lysates/proteins at 20-50 μg per lane.

Predicted band size: 123 kDa

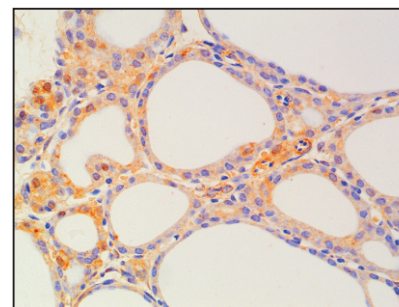
Observed band size: 123 kDa



Immunohistochemistry-Anti- P-PI3 Kinase p110 beta (Ser1070) pAb

Immunohistochemical analysis of paraffin-embedded mouse small intestine using anti- P-PI3 Kinase p110 beta (Ser1070) Rabbit Antibody at 1:100 dilution.

Perform heat mediated antigen retrieval with Tris-EDTA buffer pH 9.0



Immunohistochemistry-Anti- P-PI3 Kinase p110 beta (Ser1070) pAb

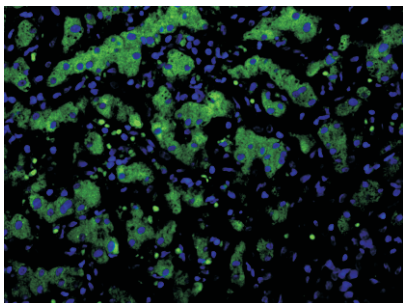
Immunohistochemical analysis of paraffin-embedded rat thyroid using anti- P-PI3 Kinase p110 beta (Ser1070) Rabbit Antibody at 1:100 dilution.  
Perform heat mediated antigen retrieval with Tris-EDTA buffer pH 9.0

## Anti- P-PI3 Kinase p110 beta (Ser1070) Rabbit pAb

WLA0482

For Research Use Only. Not For Use In Diagnostic Procedures

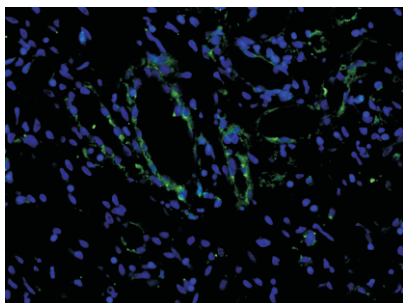
### Product Information



#### Immunofluorescence-Anti-P-PI3 Kinase p110 beta (Ser1070) pAb

Immunofluorescence analysis of paraffin-embedded human liver cancer using anti- P-PI3 Kinase p110 beta (Ser1070) Rabbit Antibody at 1:100 dilution.

Perform heat mediated antigen retrieval with Tris-EDTA buffer pH 9.0



#### Immunofluorescence-Anti-P-PI3 Kinase p110 beta (Ser1070) pAb

Immunofluorescence analysis of paraffin-embedded human renal clear cell carcinoma using anti- P-PI3 Kinase p110 beta (Ser1070) Rabbit Antibody at 1:100 dilution.

Perform heat mediated antigen retrieval with Tris-EDTA buffer pH 9.0