

Anti-RALBP1 Rabbit pAb



WL05176

For Research Use Only. Not For Use In Diagnostic Procedures

Product Information

Product name	Anti-RALBP1 Rabbit pAb		
Source	Rabbit		
Species reactivity	Human, Mouse, Rat		
Tested applications	Western blot	1:1000-1:2000	
	<i>*Suggested working dilutions are given as a guide only. It is recommended that the user titrates the product for use in their own experiment using appropriate negative and positive controls.</i>		
Pack size	50/100/200/500/1000μl		
Storage	Store at -20°C. Avoid freeze/thaw cycles.		
Storage buffer	Supplied in 20 mM phosphate (pH 7.5), 150 mM NaCl, 100 μg/ml BSA, 50% glycerol and less than 0.02% sodium azide		

General Information

Background	RALBP1 plays a role in receptor-mediated endocytosis and is a downstream effector of the small GTP-binding protein RAL. Small G proteins, such as RAL, have GDP-bound inactive and GTP-bound active forms, which shift from the inactive to the active state through the action of RALGDS, which in turn is activated by RAS.
-------------------	---

Immunogen	Polyclonal antibody is produced by immunizing animals with a synthetic peptide of RALBP1.
------------------	---

Purification	Polyclonal antibody was purified by ProteinA affinity chromatography.
---------------------	---

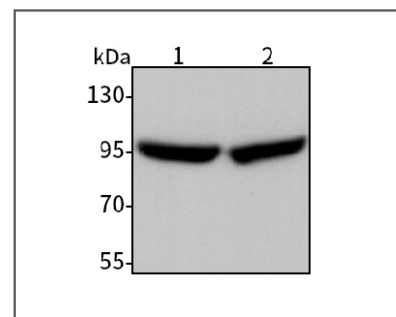
Anti-RALBP1 Rabbit pAb



WL05176

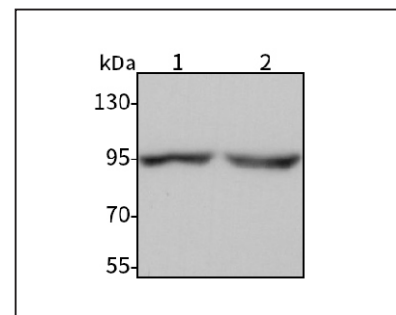
For Research Use Only. Not For Use In Diagnostic Procedures

Product Images



Western blot-Anti-RALBP1 pAb

Lane 1: Human Calu-3 cell lysate 20μg
Lane 2: Human THP-1 cell lysate 20μg
All lanes: Anti-RALBP1 at 1:1000 dilution
 Lysates/proteins at 20-50 μg per lane
 Predicted band size: 76 kDa
 Observed band size: 95 kDa



Western blot-Anti-RALBP1 pAb

Lane 1: Mouse spleen tissue lysate 10μg
Lane 2: Rat liver tissue lysate 10μg
All lanes: Anti-RALBP1 at 1:1000 dilution
 Lysates/proteins at 20-50 μg per lane
 Predicted band size: 76 kDa
 Observed band size: 95 kDa