

Anti-PAX-2/5/8 Rabbit pAb



WL00429

For Research Use Only. Not For Use In Diagnostic Procedures

Product Information

Product name	Anti-PAX-2/5/8 Rabbit pAb
Source	Rabbit
Species reactivity	Human, Mouse, Rat
Tested applications	Western blot 1:500-1:1000 <small><i>*Suggested working dilutions are given as a guide only. It is recommended that the user titrates the product for use in their own experiment using appropriate negative and positive controls.</i></small>
Molecular Wt.	46/42/48 kDa
Pack size	50/100/200/500/1000μl
Storage	Store at -20°C. Avoid freeze/thaw cycles.
Storage buffer	Supplied in 20 mM phosphate (pH 7.5), 150 mM NaCl, 100 μg/ml BSA, 50% glycerol and less than 0.02% sodium azide

General Information

Background	Paired box (PAX) proteins are a family of transcription factors that play important and diverse roles in animal development. Nine PAX proteins (PAX1-9) have been described in humans and other mammals. PAX proteins are classified into four structurally distinct subgroups (I-IV) based on the absence or presence of a carboxy-terminal homeodomain and a central octapeptide region. Subgroup II (PAX2, 5, and 8) contains the octapeptide and a truncated homeodomain. Pax2 is important for stem cell survival and lineage commitment during development. PAX5 is required to promote differentiation of common lymphoid progenitors (CLPs) into B cells. PAX8 is involved in the development of thyroid follicular cells and the expression of thyroid-specific genes.
Immunogen	Polyclonal antibody is produced by immunizing animals with a synthetic peptide of PAX-2/5/8.
Purification	Polyclonal antibody was purified by immunogen affinity chromatography.

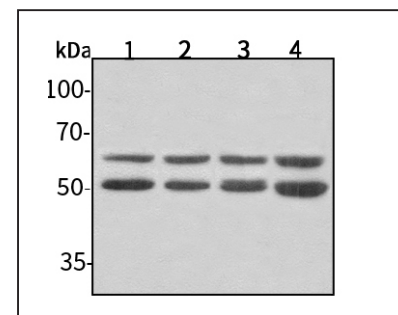
Anti-PAX-2/5/8 Rabbit pAb



WL00429

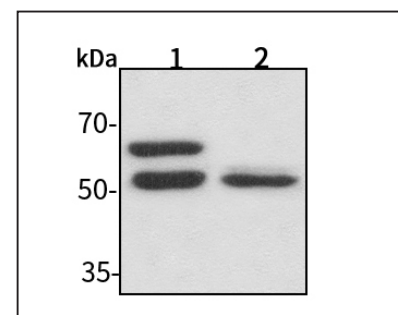
For Research Use Only. Not For Use In Diagnostic Procedures

Product Images



Western blot-Anti-PAX-2/5/8 pAb

Lane 1: Human HepG2 cell lysate 30μg
 Lane 2: Human Hela cell lysate 30μg
 Lane 3: Human BGC-823 cell lysate 30μg
 Lane 4: Human MGC-803 cell lysate 30μg
 Separation gel: 10% polyacrylamide
 Electrophoresis: 100V, 4°C, 3h
 Transmembrane: 100V, 4°C, 1h
 Blocking: 5% w/v nonfat dry milk, 1 × TBST, at RT with gentle shaking
 Primary antibody: 1:1000 in blocking buffer, 4°C, overnight
 Secondary antibody (WLA023a) : 1:5000-1:10000, 45min
 Detection: ECL, 30s-2min



Western blot-Anti-PAX-2/5/8 pAb

Lane 1: Mouse brain tissue lysate 30μg
 Lane 2: Rat stomach tissue lysate 30μg
 Separation gel: 10% polyacrylamide
 Electrophoresis: 100V, 4°C, 3h
 Transmembrane: 100V, 4°C, 1h
 Blocking: 5% w/v nonfat dry milk, 1 × TBST, at RT with gentle shaking
 Primary antibody: 1:1000 in blocking buffer, 4°C, overnight
 Secondary antibody (WLA023a) : 1:5000-1:10000, 45min
 Visualization: ECL, 30s-2min