

Product Datasheet

Anti-SMARCC1/BAF155 Rabbit pAb



WL04459

For Research Use Only. Not For Use In Diagnostic Procedures

Product Information

Product name	Anti-SMARCC1/BAF155 Rabbit pAb	
Source	Rabbit	
Species reactivity	Human, Mouse, Rat, Rabbit	
Tested applications	WB	1:1000-1:2000
	IHC	1:100-1:400
	IF	1:500
Cellular localization	Nucleus	
Pack size	50/100/200/500/1000μl	
Storage	Store at -20°C. Avoid freeze/thaw cycles.	
Storage buffer	Supplied in 20 mM phosphate (pH 7.5), 150 mM NaCl, 100 μg/ml	
	BSA, 50% glycerol and less than 0.02% sodium azide	

General Information

Background	SMARCC1 is a member of the SWI/SNF family of proteins, activation of transcription via the remodeling of nucleosome structure in an ATP-dependent manner. The protein is part of the large ATP-dependent chromatin remodeling complex SNF/SWI and contains a predicted leucine zipper motif typical of many transcription factors.
Immunogen	Polyclonal antibody is produced by immunizing animals with a synthetic peptide of SMARCC1/BAF155.
Purification	Polyclonal antibody was purified by Protein A affinity chromatography.

Product Datasheet

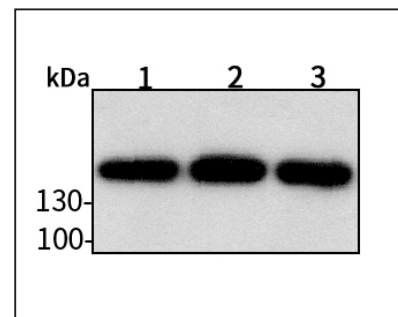
Anti-SMARCC1/BAF155 Rabbit pAb



WL04459

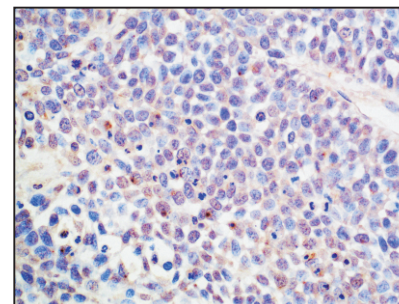
For Research Use Only. Not For Use In Diagnostic Procedures

Product Images



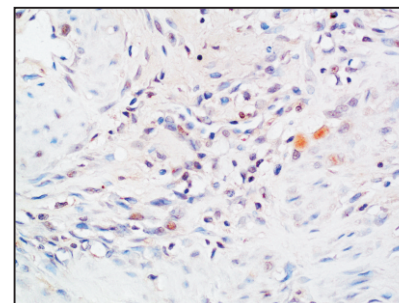
Western blot-Anti-SMARCC1/BAF155 pAb

Lane 1: Human Hela cell lysate
Lane 2: Human MCF-7 cell lysate
Lane 3: Human HEK-293 cell lysate
All lanes: Anti-SMARCC1/BAF155 at 1:1000 dilution
Lysates/proteins at 20-50 μg per lane.
Predicted band size: 123 kDa
Observed band size: 155 kDa



Immunohistochemistry-Anti-SMARCC1/BAF155 pAb

Immunohistochemical analysis of paraffin-embedded human BGC-823 cell tumorigenic tissue using anti-SMARCC1/BAF155 Rabbit Antibody at 1:200 dilution.
Perform heat mediated antigen retrieval with Tris-EDTA buffer pH 9.0



Immunohistochemistry-Anti-SMARCC1/BAF155 pAb

Immunohistochemical analysis of paraffin-embedded rat uterus using anti-SMARCC1/BAF155 Rabbit Antibody at 1:200 dilution.
Perform heat mediated antigen retrieval with Tris-EDTA buffer pH 9.0

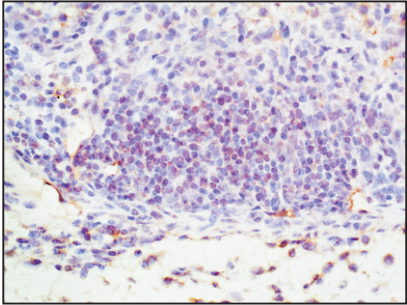
Anti-SMARCC1/BAF155 Rabbit pAb



WL04459

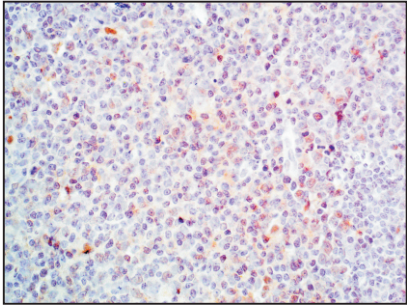
For Research Use Only. Not For Use In Diagnostic Procedures

Product Information



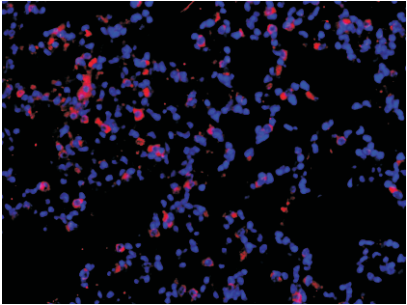
Immunohistochemistry-Anti-SMARCC1/BAF155 pAb

Immunohistochemical analysis of paraffin-embedded mouse colon using anti-SMARCC1/BAF155 Rabbit Antibody at 1:200 dilution.
Perform heat mediated antigen retrieval with Tris-EDTA buffer pH 9.0



Immunohistochemistry-Anti-SMARCC1/BAF155 pAb

Immunohistochemical analysis of paraffin-embedded rabbit thymus using anti-SMARCC1/BAF155 Rabbit Antibody at 1:200 dilution.
Perform heat mediated antigen retrieval with Tris-EDTA buffer pH 9.0



Immunofluorescence-Anti-SMARCC1/BAF155 pAb

Immunofluorescence analysis of paraffin-embedded mouse lung using anti-SMARCC1/BAF155 Rabbit Antibody at 1:500 dilution.
Perform heat mediated antigen retrieval with Tris-EDTA buffer pH 9.0

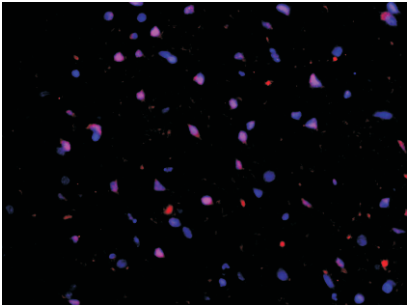
Anti-SMARCC1/BAF155 Rabbit pAb



WL04459

For Research Use Only. Not For Use In Diagnostic Procedures

Product Information



Immunofluorescence-Anti-SMARCC1/BAF155 pAb

Immunofluorescence analysis of paraffin-embedded rat brain using anti-SMARCC1/BAF155 Rabbit Antibody at 1:500 dilution.
Perform heat mediated antigen retrieval with Tris-EDTA buffer pH 9.0