

Anti-Integrin $\beta 3$ Rabbit pAb

WL04156

For Research Use Only. Not For Use In Diagnostic Procedures

Product Information

Product name	Anti-Integrin $\beta 3$ Rabbit pAb		
Source	Rabbit		
Species reactivity	Mouse, Rat		
Tested applications	WB	1:1000-1:2000	
Pack size	50/100/200/500/1000 μ l		
Storage	Store at -20°C. Avoid freeze/thaw cycles.		
Storage buffer	Supplied in 20 mM phosphate (pH 7.5), 150 mM NaCl, 100 μ g/ml BSA, 50% glycerol and less than 0.02% sodium azide		

General Information

Background

Integrins are heterodimeric cell surface receptors that play a pivotal role in cell adhesion and migration, as well as in growth and survival. Integrins not only transmit signals to cells in response to the extracellular environment (outside-in signaling), but also sense intracellular cues to alter their interaction with the extracellular environment (inside-out signaling). Most Integrin receptors bind ligands that are components of the extracellular matrix, including fibronectin, collagen and vitronectin. Signals transduced by Integrins play a role in many biological processes, including cell growth, differentiation, migration and apoptosis.

Immunogen

Polyclonal antibody is produced by immunizing animals with a synthetic peptide of Integrin $\beta 3$.

Purification

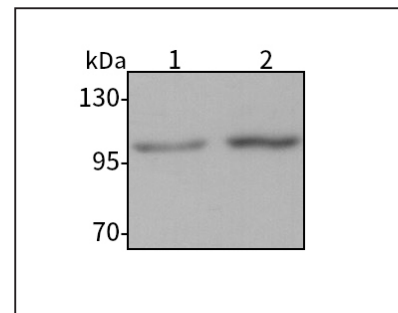
Polyclonal antibody was purified by protein A affinity chromatography.

Anti-Integrin $\beta 3$ Rabbit pAb

WL04156

For Research Use Only. Not For Use In Diagnostic Procedures

Product Images

Western blot-Anti-Integrin $\beta 3$ pAb

Lane 1: Mouse bone marrow tissue lysate

Lane 2: Rat bone marrow tissue lysate

All lanes: Anti-Integrin $\beta 3$ at 1:1000 dilutionLysates/proteins at 20-50 μ g per lane.

Predicted band size: 87 kDa

Observed band size: 100-110 kDa