

Anti-VWF Rabbit pAb



For Research Use Only. Not For Use In Diagnostic Procedures

WL03055

Product Information

Product name	Anti-VWF Rabbit pAb		
Source	Rabbit		
Species reactivity	Mouse, Rat		
Tested applications	Western blot	1:1000-1:2000	
<i>*Suggested working dilutions are given as a guide only. It is recommended that the user titrates the product for use in their own experiment using appropriate negative and positive controls.</i>			
Pack size	50/100/200/500/1000μl		
Storage	Store at -20°C. Avoid freeze/thaw cycles.		
Storage buffer	Supplied in 20 mM phosphate (pH 7.5), 150 mM NaCl, 100 μg/ml BSA, 50% glycerol and less than 0.02% sodium azide		

General Information

Background	Von Willebrand disease is a congenital bleeding disorder caused by defects in the von Willebrand factor protein (VWF). VWF is thought to undergo a variety of posttranslational modifications that influence the affinity and availability for Factor VII, including cleavage of the propeptide and formation of N-terminal intersubunit disulfide bonds. VWF is a multimeric glycoprotein that is found in endothelial cells, plasma and platelets, and it is involved in the coagulation of blood at injury sites. VWF acts as a carrier protein for Factor VIII, a cofactor required for coagulation, and it promotes platelet adhesion and aggregation.
Immunogen	Polyclonal antibody is produced by immunizing animals with recombinant protein of VWF.
Purification	Polyclonal antibody was purified by Protein A affinity chromatography.

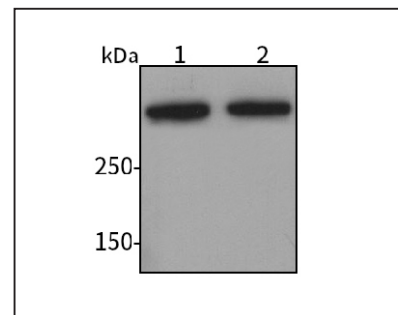
Anti-VWF Rabbit pAb



For Research Use Only. Not For Use In Diagnostic Procedures

WL03055

Product Images



Western blot-Anti-VWF pAb

Lane 1: Mouse placenta tissue lysate
 Lane 2: Rat placenta tissue lysate
 All lanes: Anti-VWF at 1:1000 dilution
 Lysates/proteins at 20-50 μg per lane.
 Predicted band size: 309 kDa