

## Anti-Rho A Rabbit pAb



WL01134

For Research Use Only. Not For Use In Diagnostic Procedures

## Product Information

<b>Product name</b>	Anti-Rho A Rabbit pAb
<b>Source</b>	Rabbit
<b>Species reactivity</b>	Human, Mouse, Rat, Rabbit
<b>Tested applications</b>	Western blot 1:1000-1:2000
	<i>*Suggested working dilutions are given as a guide only. It is recommended that the user titrates the product for use in their own experiment using appropriate negative and positive controls.</i>
<b>Molecular Wt.</b>	22 kDa
<b>Pack size</b>	50/100/200/500/1000μl
<b>Storage</b>	Store at -20°C. <b>Avoid freeze/thaw cycles.</b>
<b>Storage buffer</b>	Supplied in 20 mM phosphate (pH 7.5), 150 mM NaCl, 100 μg/ml BSA, 50% glycerol and less than 0.02% sodium azide

## General Information

**Background**

Rho proteins promote reorganization of the actin cytoskeleton and regulate cell shape, attachment, and motility. Overexpression of this gene is associated with tumor cell proliferation and metastasis. The Ras p21 family of guanine nucleotide proteins has been widely studied in view of its apparent role in signal transduction pathways and high frequency of mutations in human malignancies. It is now clear, however, that the Ras proteins (H-, K- and N-Ras p21) are members of a much larger superfamily of related proteins. Six members of this family, Rap 1A, Rap 1B, Rap 2, R-Ras, Ral A and Ral B, exhibit approximately 50% amino acid homology to Ras. The six mammalian Rho proteins (Rho A, B, C, G, 7 and 8) are approximately 30% homologous to Ras and are expressed in a wide range of cell types.

**Immunogen**

Polyclonal antibody is produced by immunizing animals with a synthetic peptide of Rho A.

**Purification**

Polyclonal antibody was purified by Protein A affinity chromatography.

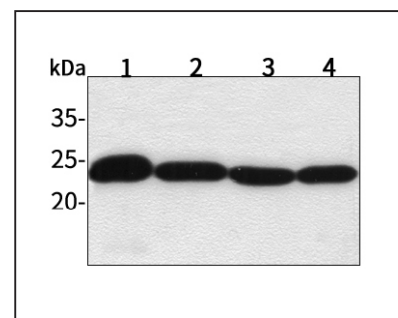
## Anti-Rho A Rabbit pAb



WL01134

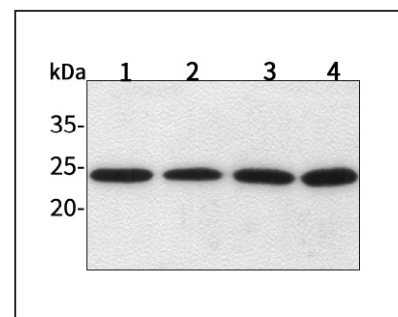
For Research Use Only. Not For Use In Diagnostic Procedures

## Product Images



## Western blot-Anti-Rho A pAb

Lane 1: Human HepG2 cell lysate 30μg  
 Lane 2: Human Hela cell lysate 30μg  
 Lane 3: Human BGC-823 cell lysate 30μg  
 Lane 4: Human MGC-803 cell lysate 30μg  
 Separation gel: 15% polyacrylamide  
 Electrophoresis: 100V, 4°C, 3h  
 Transmembrane: 100V, 4°C, 1h  
 Blocking: 5% w/v nonfat dry milk, 1 × TBST, at RT with gentle shaking  
 Primary antibody: 1:1000 in blocking buffer, 4°C, overnight  
 Visualization: ECL, 30s-2min



## Western blot-Anti-Rho A pAb

Lane 1: Mouse kidney tissue lysate 30μg  
 Lane 2: Mouse heart tissue lysate 30μg  
 Lane 3: Rat lung tissue lysate 30μg  
 Lane 4: Rat colon tissue lysate 30μg  
 Separation gel: 15% polyacrylamide  
 Electrophoresis: 100V, 4°C, 3h  
 Transmembrane: 100V, 4°C, 1h  
 Blocking: 5% w/v nonfat dry milk, 1 × TBST, at RT with gentle shaking  
 Primary antibody: 1:1000 in blocking buffer, 4°C, overnight  
 Visualization: ECL, 30s-2min