

Anti-ACE2 Rabbit pAb



WL04708

For Research Use Only. Not For Use In Diagnostic Procedures

Product Information

| | | |
|------------------------------|--|--------------|
| Product name | Anti-ACE2 Rabbit pAb | |
| Source | Rabbit | |
| Species reactivity | Human, Mouse, Rat | |
| Tested applications | WB | 1:500-1:1000 |
| | IHC, IF | 1:100-1:200 |
| Cellular localization | Secreted and Cell membrane. | |
| Pack size | 50/100/200/500/1000μl | |
| Storage | Store at -20°C. Avoid freeze/thaw cycles. | |
| Storage buffer | Supplied in 20 mM phosphate (pH 7.5), 150 mM NaCl, 100 μg/ml | |
| | BSA, 50% glycerol and less than 0.02% sodium azide | |

General Information

| | |
|---------------------|--|
| Background | ACE2 is a zinc metalloprotease of the ACE family and a critical regulator of the reninangiotensin system. This secreted protein catalyzes the cleavage of angiotensin I into angiotensin 1-9, and angiotensin II into the vasodilator angiotensin 1-7. ACE2 is known to be expressed in various human organs, and its organ- and cell-specific expression suggests that it may play a role in the regulation of cardiovascular and renal function, as well as fertility. |
| Immunogen | Polyclonal antibody is produced by immunizing animals with a synthetic peptide of ACE2. |
| Purification | Polyclonal antibody was purified by immunogen affinity chromatography. |

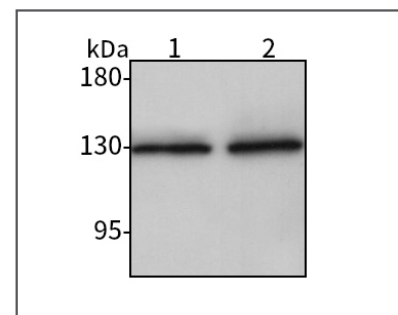
Anti-ACE2 Rabbit pAb



WL04708

For Research Use Only. Not For Use In Diagnostic Procedures

Product Images



Western blot-Anti-ACE2 pAb

Lane 1: Human LP-1 cell lysate

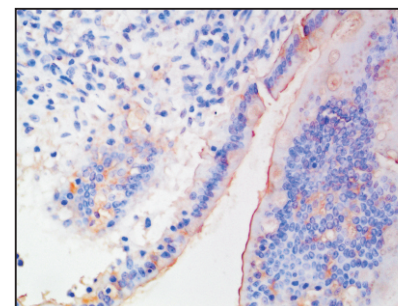
Lane 2: Human SiHa cell lysate

All lanes: Anti-ACE2 at 1:1000 dilution

Lysates/proteins at 20-50 μg per lane.

Predicted band size: 92 kDa

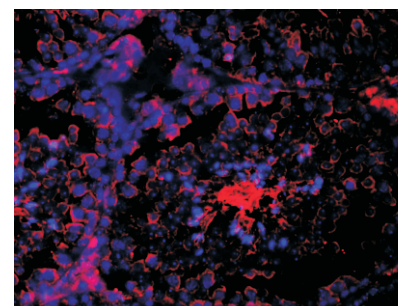
Observed band size: 92-135 kDa



Immunohistochemistry-Anti-ACE2 pAb

Immunohistochemical analysis of paraffin-embedded rat intestine using anti-ACE2 Rabbit Antibody at 1:100 dilution.

Perform heat mediated antigen retrieval with Tris-EDTA buffer pH 9.0



Immunofluorescence-Anti-ACE2 pAb

Immunofluorescence analysis of paraffin-embedded mouse testis using anti-ACE2 Rabbit Antibody at 1:100 dilution.

Perform heat mediated antigen retrieval with Tris-EDTA buffer pH 9.0