

Anti-Interferon alpha 1 Rabbit pAb



WL04798

For Research Use Only. Not For Use In Diagnostic Procedures

Product Information

Product name	Anti-Interferon alpha 1 Rabbit pAb
Source	Rabbit
Species reactivity	Human
Tested applications	WB 1:1000-1:2000
Cellular localization	Secreted and Cell membrane
Pack size	50/100/200/500/1000µl
Storage	Store at -20°C. Avoid freeze/thaw cycles.
Storage buffer	Supplied in 20 mM phosphate (pH 7.5), 150 mM NaCl, 100 µg/ml BSA, 50% glycerol and less than 0.02% sodium azide

General Information

Background

IFNA1 (IFN- α) is a member of the Type I IFN (1) family best known for their antiviral activity. It is a key cytokine regulating the activity of B cells, T-helper cells (Th cells), cDCs and natural killer cells (NK cells). IFN- α induces B cell maturation into plasma cells and immunoglobulin production. IFN- α plays an important role in the pathogenesis of systemic lupus erythematosus (SLE).

Immunogen

Polyclonal antibody is produced by immunizing animals with a synthetic peptide of Interferon alpha 1.

Purification

Polyclonal antibody was purified by Protein A affinity chromatography.

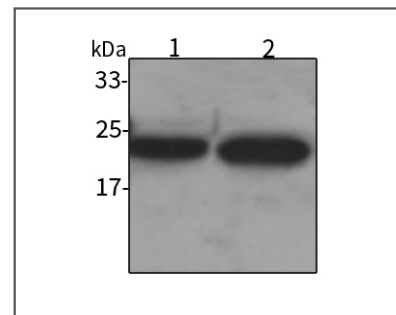
Anti-Interferon alpha 1 Rabbit pAb



WL04798

For Research Use Only. Not For Use In Diagnostic Procedures

Product Images



Western blot-Anti-Interferon alpha 1 pAb

Lane 1: Human Hela cell lysate

Lane 2: Human HCT116 cell lysate

All lanes: Anti-Interferon alpha 1 at 1:1000 dilution

Lysates/proteins at 20-50 µg per lane.

Predicted band size: 22 kDa

Observed band size: 22 kDa