

## Anti-CD11c Rabbit pAb



WL05177

For Research Use Only. Not For Use In Diagnostic Procedures

## Product Information

<b>Product name</b>	Anti-CD11c Rabbit pAb	
<b>Source</b>	Rabbit	
<b>Species reactivity</b>	Human, Mouse, Rat	
<b>Tested applications</b>	WB	1:1000-1:2000
<b>Pack size</b>	50/100/200/500/1000µl	
<b>Storage</b>	Store at -20°C. <b>Avoid freeze/thaw cycles.</b>	
<b>Storage buffer</b>	Supplied in 20 mM phosphate (pH 7.5), 150 mM NaCl, 100 µg/ml BSA, 50% glycerol and less than 0.02% sodium azide	

## General Information

<b>Background</b>	Integrins are heterodimeric integral membrane proteins composed of an alpha chain and a beta chain. CD11c, also known as integrin $\alpha$ X, is a type I transmembrane glycoprotein present on a variety of cells, including monocytes/macrophages, granulocytes, a subset of B cells, NK cells and dendritic cells. The alpha X beta 2 complex seems to overlap the properties of the alpha M beta 2 integrin in the adherence of neutrophils and monocytes to stimulated endothelium cells, and in the phagocytosis of complement coated particles.
-------------------	--

<b>Immunogen</b>	Polyclonal antibody is produced by immunizing animals with a synthetic peptide of Cd11c.
------------------	--

<b>Purification</b>	Polyclonal antibody was purified by Protein A affinity chromatography.
---------------------	--

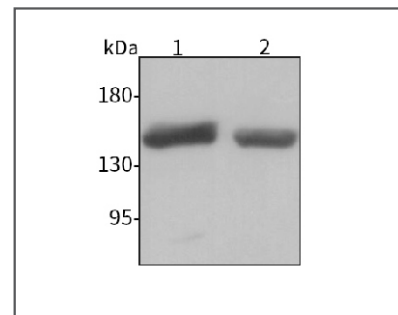
## Anti-CD11c Rabbit pAb



WL05177

For Research Use Only. Not For Use In Diagnostic Procedures

## Product Images



Western blot-Anti-CD11c pAb

Lane 1: Human HEP-G2 cell lysate

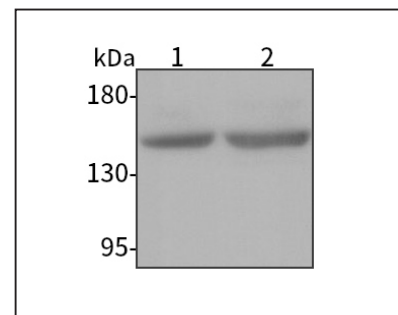
Lane 2: Human Raji cell lysate

All lanes: Anti-CD11c at 1:1000 dilution

Lysates/proteins at 20-50 µg per lane.

Predicted band size: 128 kDa

Observed band size: 128/150 kDa



Western blot-Anti-CD11c pAb

Lane 1: Mouse spleen tissue lysate

Lane 2: Rat spleen tissue lysate

All lanes: Anti-CD11c at 1:1000 dilution

Lysates/proteins at 20-50 µg per lane.

Predicted band size: 128 kDa

Observed band size: 128/150 kDa