

## Anti-APC Rabbit pAb



WL02422

For Research Use Only. Not For Use In Diagnostic Procedures

## Product Information

Product name	Anti-APC Rabbit pAb		
Source	Rabbit		
Species reactivity	Human, Mouse, Rat		
Tested applications	WB	1:500-1:1000	
	IHC, IF	1:100-1:200	
Cellular localization	Cell junction, adherens junction. Cytoplasm , cytoskeleton. Cell projection.		
	Cell membrane.		
Pack size	50/100/200/500/1000µl		
Storage	Store at -20°C. <b>Avoid freeze/thaw cycles.</b>		
Storage buffer	Supplied in 20 mM phosphate (pH 7.5), 150 mM NaCl, 100 µg/ml		
	BSA, 50% glycerol and less than 0.02% sodium azide		

## General Information

<b>Background</b>	The Adenomatous Polyposis Coli (APC) tumor suppressor gene is mutated in most familial and sporadic colorectal cancers and encodes a large cytoplasmic protein that is implicated in cell migration, cell adhesion, and proliferation. APC binds directly to microtubules and lack of APC leads to defective mitotic spindles and aneuploidy due to missegregation of chromosomes. APC is well characterized as a scaffolding protein, binds to β-catenin, and is involved in the regulation of its intracellular concentration. Disease-associated mutations tend to be clustered in a small region designated the mutation cluster region (MCR) and result in a truncated protein product.
<b>Immunogen</b>	Polyclonal antibody is produced by immunizing animals with a synthetic peptide of APC.
<b>Purification</b>	Polyclonal antibody was purified by immunogen affinity chromatography.

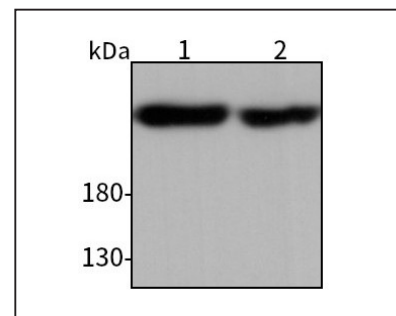
## Anti-APC Rabbit pAb



WL02422

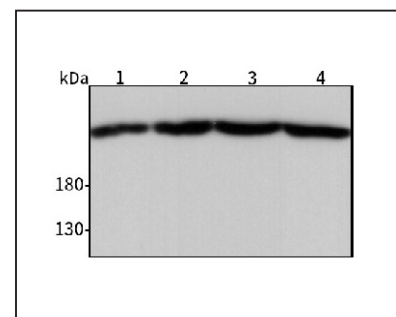
For Research Use Only. Not For Use In Diagnostic Procedures

## Product Images



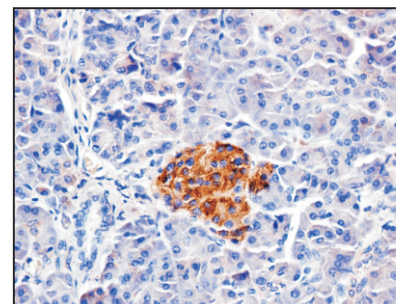
## Western blot-Anti-APC pAb

Lane 1: Human Hela cell lysate  
 Lane 2: Human HepG2 cell lysate  
 All lanes: Anti-APC at 1:1000 dilution  
 Lysates/proteins at 20-50 µg per lane.  
 Predicted band size: 312 kDa  
 Observed band size: 312 kDa



## Western blot-Anti-APC pAb

Lane 1: Mouse kidney tissue lysate  
 Lane 2: Mouse liver tissue lysate  
 Lane 3: Rat kidney tissue lysate  
 Lane 4: Rat liver tissue lysate  
 All lanes: Anti-APC at 1:1000 dilution  
 Lysates/proteins at 20-50 µg per lane.  
 Predicted band size: 312 kDa  
 Observed band size: 312 kDa



## Immunohistochemistry-Anti-APC pAb

Immunohistochemical analysis of paraffin-embedded human pancreas using anti-APC Rabbit Antibody at 1:100 dilution.  
 Perform heat mediated antigen retrieval with Tris-EDTA buffer pH 9.0

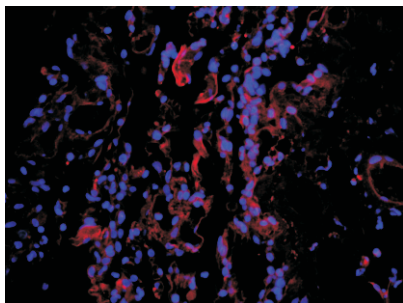
## Anti-APC Rabbit pAb



WL02422

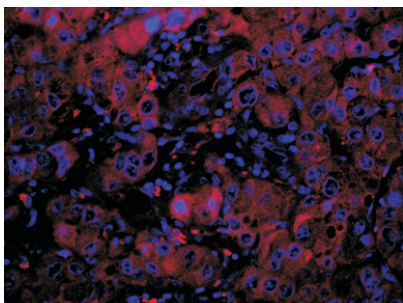
For Research Use Only. Not For Use In Diagnostic Procedures

### Product Information



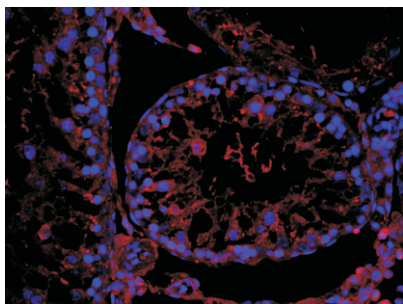
#### Immunofluorescence-Anti-APC pAb

Immunofluorescence analysis of paraffin-embedded human lung cancer using anti-APC Rabbit Antibody at 1:100 dilution.  
Perform heat mediated antigen retrieval with Tris-EDTA buffer pH 9.0



#### Immunofluorescence-Anti-APC pAb

Immunofluorescence analysis of paraffin-embedded human liver cancer using anti-APC Rabbit Antibody at 1:100 dilution.  
Perform heat mediated antigen retrieval with Tris-EDTA buffer pH 9.0



#### Immunofluorescence-Anti-APC pAb

Immunofluorescence analysis of paraffin-embedded rat testis using anti-APC Rabbit Antibody at 1:100 dilution.  
Perform heat mediated antigen retrieval with Tris-EDTA buffer pH 9.0