

Anti-P-STAT3 (Ser727) Rabbit pAb



WLP2412

For Research Use Only. Not For Use In Diagnostic Procedures

Product Information

Product name	Anti-P-STAT3 (Ser727) Rabbit pAb	
Source	Rabbit	
Species reactivity	Human, Mouse, Rat	
Tested applications	Western blot	1:500-1000
	Immunohistochemistry	1:200

**Suggested working dilutions are given as a guide only. It is recommended that the user titrates the product for use in their own experiment using appropriate negative and positive controls.*

Cellular localization Cytoplasm. Nucleus.

Pack size 50/100/200/500/1000μl

Storage Store at -20°C. **Avoid freeze/thaw cycles.**

Storage buffer Supplied in 20 mM phosphate (pH 7.5), 150 mM NaCl, 100 μg/ml BSA, 50% glycerol and less than 0.02% sodium azide

General Information

Background The protein encoded by this gene is a member of the STAT protein family. In response to cytokines and growth factors, STAT family members are phosphorylated by the receptor associated kinases, and then form homo- or heterodimers that translocate to the cell nucleus where they act as transcription activators. Although early reports indicate Stat3 activation by EGF and IL-6, it has been shown that Stat3β appears to be activated by both while Stat3α is activated by EGF, but not by IL-6. Phosphorylated on serine upon DNA damage, probably by ATM or ATR. Serine phosphorylation is important for the formation of stable DNA-binding STAT3 homodimers and maximal transcriptional activity. ARL2BP may participate in keeping the phosphorylated state of STAT3 within the nucleus.

Immunogen Polyclonal antibody is produced by immunizing animals with a synthetic peptide of P-STAT3 (Ser727).

Purification Polyclonal antibody was purified by immunogen affinity chromatography.

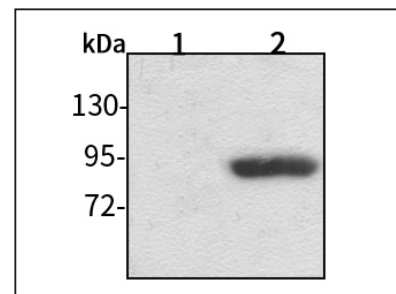
Anti-P-STAT3 (Ser727) Rabbit pAb



WLP2412

For Research Use Only. Not For Use In Diagnostic Procedures

Product Images



Western blot-Anti-P-STAT3 (Ser727) pAb

Lane 1: Human HepG2 cell lysate

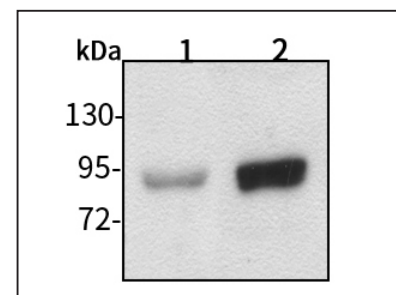
Lane 2: Human HepG2 cell treated with TPA lysate

All lanes: Anti-p-STAT3(Tyr727) at 1:1000 dilution

Lysates/proteins at 20-50 μg per lane.

Predicted band size: 88 kDa

Observed band size: 92 kDa



Western blot-Anti-P-STAT3 (Ser727) pAb

Lane 1: Mouse testicle tissue lysate

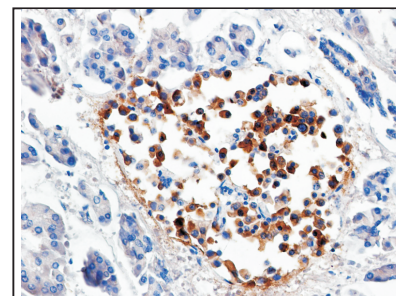
Lane 2: Rat stomach tissue lysate

All lanes: Anti-p-STAT3(Tyr727) at 1:1000 dilution

Lysates/proteins at 20-50 μg per lane.

Predicted band size: 88 kDa

Observed band size: 92 kDa



Immunohistochemistry-Anti-P-STAT3 (Ser727) pAb

Sample: Human pancreas cancer tissue

Antigen retrieval: pH 9.0 Tris-EDTA buffer

Primary antibody: 1:200, 4°C, overnight

Secondary antibody-Biotin: 1:150, 37°C, 1h

Streptavidin-HRP: 1:200, 37°C, 30min

Color Developing: DAB

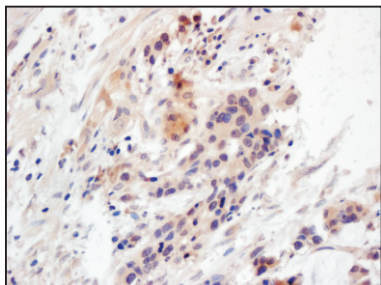
Anti-P-STAT3 (Ser727) Rabbit pAb



For Research Use Only. Not For Use In Diagnostic Procedures

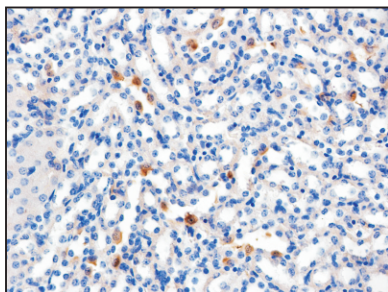
WLP2412

Product Information



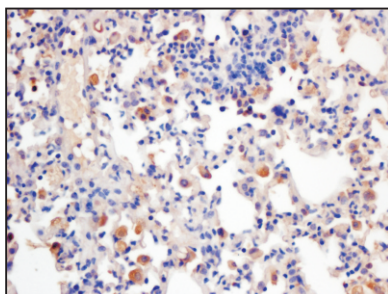
Immunohistochemistry-Anti-P-STAT3 (Ser727) pAb

Sample: Human colon cancer tissue
Antigen retrieval: pH 9.0 Tris-EDTA buffer
Primary antibody: 1:200, 4°C, overnight
Secondary antibody-Biotin: 1:150, 37°C, 1h
Streptavidin-HRP: 1:200, 37°C, 30min
Color Developing: DAB



Immunohistochemistry-Anti-P-STAT3 (Ser727) pAb

Sample: Mouse kidney tissue
Antigen retrieval: pH 9.0 Tris-EDTA buffer
Primary antibody: 1:200, 4°C, overnight
Secondary antibody-Biotin: 1:150, 37°C, 1h
Streptavidin-HRP: 1:200, 37°C, 30min
Color Developing: DAB



Immunohistochemistry-Anti-P-STAT3 (Ser727) pAb

Sample: Mouse lung tissue
Antigen retrieval: pH 9.0 Tris-EDTA buffer
Primary antibody: 1:200, 4°C, overnight
Secondary antibody-Biotin: 1:150, 37°C, 1h
Streptavidin-HRP: 1:200, 37°C, 30min
Color Developing: DAB

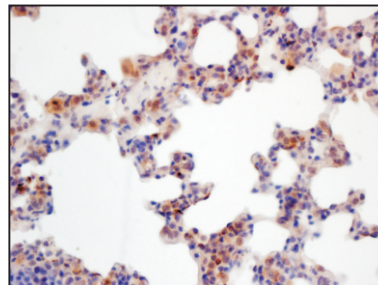
Anti-P-STAT3 (Ser727) Rabbit pAb



For Research Use Only. Not For Use In Diagnostic Procedures

WLP2412

Product Images



Immunohistochemistry-Anti-P-STAT3 (Ser727) pAb

Sample: Rat lung tissue
Antigen retrieval: pH 9.0 Tris-EDTA buffer
Primary antibody: 1:200, 4°C, overnight
Secondary antibody-Biotin: 1:150, 37°C, 1h
Streptavidin-HRP: 1:200, 37°C, 30min
Color Developing: DAB