

Anti-Ki-67 Rabbit pAb



WL01384a

For Research Use Only. Not For Use In Diagnostic Procedures

Product Information

Product name	Anti-Ki-67 Rabbit pAb	
Source	Rabbit	
Species reactivity	Human, Mouse, Rat	
Tested applications	WB	1:1000-1:2000
	IHC	1:100
Cellular localization	nucleus	
Pack size	50/100/200/500/1000μl	
Storage	Store at -20°C. Avoid freeze/thaw cycles.	
Storage buffer	Supplied in 20 mM phosphate (pH 7.5), 150 mM NaCl, 100 μg/ml	
	BSA, 50% glycerol and less than 0.02% sodium azide	

General Information

Background	Ki-67, named after the location where it was discovered (Kiel University, Germany), is a nuclear nonhistone protein that is universally expressed among proliferating cells and absent in quiescent cells. Ki-67 detects proliferating cells in G1, S, G2, and mitosis, but not in the G0 resting phase. Research studies have shown that high levels of Ki-67 are associated with poorer breast cancer survival. Research studies have explored the use of Ki-67, along with other markers, as potential prognostic or predictive markers in breast cancer and other malignant diseases.
Immunogen	Polyclonal antibody is produced by immunizing animals with a synthetic peptide of Ki-67.
Purification	Polyclonal antibody was purified by protein A affinity chromatography.

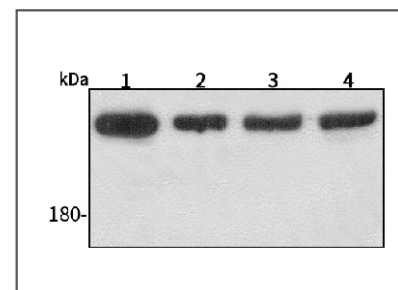
Anti-Ki-67 Rabbit pAb



WL01384a

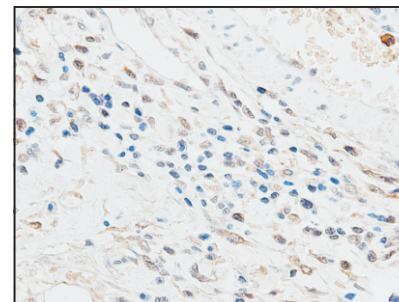
For Research Use Only. Not For Use In Diagnostic Procedures

Product Images



Western blot-Anti-Ki-67 pAb

Lane 1: Human Hela cell lysate
 Lane 2: Human MGC-803 cell lysate
 Lane 3: Human SGC-7901 cell lysate
 Lane 4: Human MCF-7 cell lysate
 All lanes: Anti-Ki-67 at 1:1000 dilution
 Lysates/proteins at 20-50 μg per lane.
 Predicted band size: 359 kDa
 Observed band size: 359 kDa



Immunohistochemistry-Anti-Ki-67 pAb

Immunohistochemical analysis of paraffin-embedded mouse kidney using anti-Ki-67 Rabbit Antibody at 1:100 dilution.
 Perform heat mediated antigen retrieval with Tris-EDTA buffer pH 9.0