

Anti-INSR/Insulin Receptor β Rabbit pAb

WL02857

For Research Use Only. Not For Use In Diagnostic Procedures

Product Information

Product name	Anti-INSR/Insulin Receptor β Rabbit pAb		
Source	Rabbit		
Species reactivity	Human, Mouse, Rat		
Tested applications	WB	1:500-1:1000	
Pack size	50/100/200/500/1000 μ l		
Storage	Store at -20°C. Avoid freeze/thaw cycles.		
Storage buffer	Supplied in 20 mM phosphate (pH 7.5), 150 mM NaCl, 100 μ g/ml BSA, 50% glycerol and less than 0.02% sodium azide		

General Information

Background

The insulin receptor (IR) is a heterodimeric protein complex that has an intracellular β subunit and an extracellular α subunit, which is disulfide-linked to a transmembrane segment. The human insulin receptor gene maps to chromosome 19p13.3-p13.2 and encodes a 1382 amino acid protein that cleaves to form α and β subunits. Insulin receptors (IRs) share significant structural and functional similarity with IGF-I receptors, including the presence of an equivalent tyrosine cluster (Tyr1146/1150/1151) within the kinase domain activation loop. Tyrosine autophosphorylation of IRs is one of the earliest cellular responses to insulin stimulation.

Immunogen

Polyclonal antibody is produced by immunizing animals with a synthetic peptide of INSR/Insulin Receptor β .

Purification

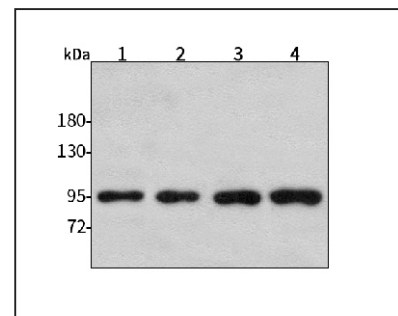
Polyclonal antibody was purified by immunogen affinity chromatography.

Anti-INSR/Insulin Receptor β Rabbit pAb

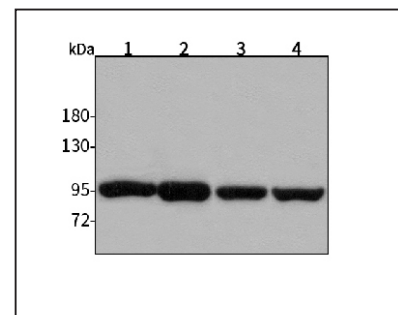
WL02857

For Research Use Only. Not For Use In Diagnostic Procedures

Product Images

Western blot-Anti-INSR/Insulin Receptor β pAb

Lane 1: Human MGC-803 cell lysate
Lane 2: Human SGC-7901 cell lysate
Lane 3: Human MCF-7 cell lysate
Lane 4: Human HEK-293 cell lysate
All lanes: Anti-INSR/Insulin Receptor β at 1:1000 dilution
 Lysates/proteins at 20-50 μ g per lane.
 Predicted band size: 95 kDa
 Observed band size: 95/220 kDa

Western blot-Anti-INSR/Insulin Receptor β pAb

Lane 1: Mouse kidney tissue lysate
Lane 2: Mouse heart tissue lysate
Lane 3: Rat liver tissue lysate
Lane 4: Rat brain tissue lysate
All lanes: Anti-INSR/Insulin Receptor β at 1:1000 dilution
 Lysates/proteins at 20-50 μ g per lane.
 Predicted band size: 95 kDa
 Observed band size: 95/220 kDa