

Anti-CD163 Rabbit pAb



WL03026

For Research Use Only. Not For Use In Diagnostic Procedures

Product Information

Product name	Anti-CD163 Rabbit pAb	
Source	Rabbit	
Species reactivity	Human, Mouse, Rat	
Tested applications	WB	1:1000-1:2000
	IHC	1:500
	IF	1:500
Cellular localization	Secreted and Cell membrane	
Pack size	50/100/200/500/1000μl	
Storage	Store at -20°C. Avoid freeze/thaw cycles.	
Storage buffer	Supplied in 20 mM phosphate (pH 7.5), 150 mM NaCl, 100 μg/ml	
	BSA, 50% glycerol and less than 0.02% sodium azide	

General Information

Background	Cd163 is the high affinity scavenger receptor for the hemoglobin-haptoglobin complex and in the absence of haptoglobin - with lower affinity - for hemoglobin alone. It has also been shown to mark cells of monocyte/macrophage lineage. A soluble form of the receptor exists in plasma, commonly denoted sCD163. It is generated by ectodomain shedding of the membrane bound receptor. The existence of several CD163 isoforms, which differ in the structure of their cytoplasmic domains and putative phosphorylation sites, suggests that these isoforms also differ in their signaling mechanism.
Immunogen	Polyclonal antibody is produced by immunizing animals with a synthetic peptide of CD163.
Purification	Polyclonal antibody was purified by Protein A affinity chromatography.

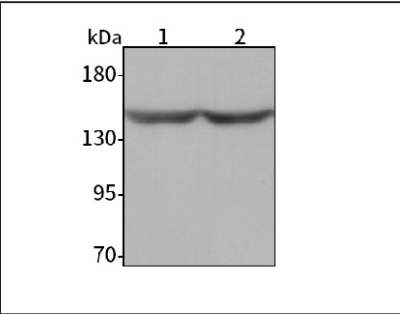
Anti-CD163 Rabbit pAb



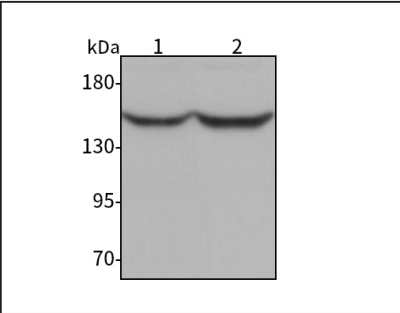
WL03026

For Research Use Only. Not For Use In Diagnostic Procedures

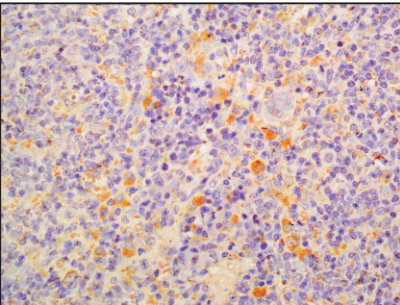
Product Images



Western blot-Anti-CD163 pAb
Lane 1: Human placenta tissue lysate
Lane 2: Human HepG2 cell lysate
All lanes: Anti-CD163 at 1:1000 dilution
Lysates/proteins at 20-50 μg per lane.
Predicted band size: 125 kDa
Observed band size: 130-150 kDa



Western blot-Anti-CD163 pAb
Lane 1: Mouse lung tissue lysate
Lane 2: Rat lung tissue lysate
All lanes: Anti-CD163 at 1:1000 dilution
Lysates/proteins at 20-50 μg per lane.
Predicted band size: 125 kDa
Observed band size: 130-150 kDa



Immunohistochemistry-Anti-CD163 pAb
Immunohistochemical analysis of paraffin-embedded rat spleen using anti-CD163 Rabbit Antibody at 1:500 dilution.
Perform heat mediated antigen retrieval with Tris-EDTA buffer pH 9.0

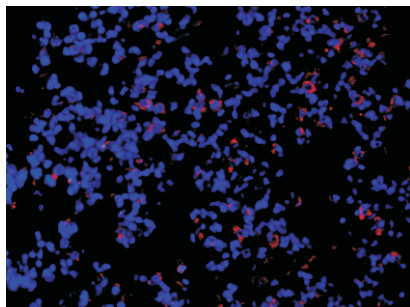
Anti-CD163 Rabbit pAb



WL03026

For Research Use Only. Not For Use In Diagnostic Procedures

Product Information



Immunofluorescence-Anti-CD163 pAb

Immunofluorescence analysis of paraffin-embedded mouse lung using anti-CD163 Rabbit Antibody at 1:500 dilution.

Perform heat mediated antigen retrieval with Tris-EDTA buffer pH 9.0