

## Anti- NME2 Rabbit pAb



WLR0217

For Research Use Only. Not For Use In Diagnostic Procedures

## Product Information

<b>Product name</b>	Anti- NME2 Rabbit pAb	
<b>Source</b>	Rabbit	
<b>Species reactivity</b>	Human, Mouse, Rat	
<b>Tested applications</b>	WB	1:1000-1:2000
	IHC	1:100-1:500
<b>Cellular localization</b>	Cytoplasm. Nucleus.	
<b>Pack size</b>	50/100/200/500/1000µl	
<b>Storage</b>	Store at -20°C. <b>Avoid freeze/thaw cycles.</b>	
<b>Storage buffer</b>	Supplied in 20 mM phosphate (pH 7.5), 150 mM NaCl, 100 µg/ml BSA, 50% glycerol and less than 0.02% sodium azide	

## General Information

<b>Background</b>	NME2 (non metastatic cell 2, protein), also known as NDKB (nucleoside diphosphate kinase B), NM23B, belongs to the NDK family. It participates in the phosphorylation of nucleoside diphosphates and interacts with membrane receptors, forming a novel molecular regulatory mechanism for GPCR endocytosis. It negatively regulates RHO activity by interacting with AKAP13/LBC. NME2 can act as a transcription activator for MYC genes and bind to non-specific DNA. It also exhibits histidine protein kinase activity.
<b>Immunogen</b>	Polyclonal antibody is produced by immunizing animals with a synthetic peptide of NME2.
<b>Purification</b>	Polyclonal antibody was purified by Protein A affinity chromatography.

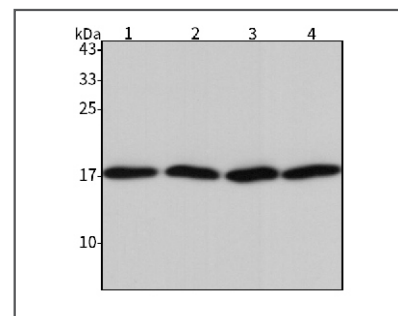
## Anti- NME2 Rabbit pAb



WLR0217

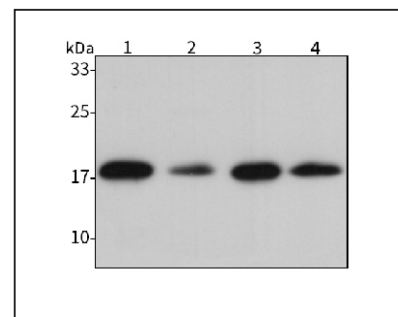
For Research Use Only. Not For Use In Diagnostic Procedures

## Product Images



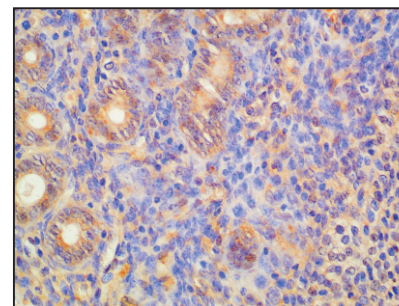
## Western blot-Anti- NME2 pAb

**Lane 1:** Human Hela cell lysate  
**Lane 2:** Human MDA-MB-231 cell lysate  
**Lane 3:** Human breast cancer tissue lysate  
**Lane 3:** Human ovarian cancer tissue lysate  
**All lanes:** Anti- NME2 at 1:2000 dilution  
 Lysates/proteins at 20-50 µg per lane.  
 Predicted band size: 17 kDa  
 Observed band size: 17 kDa



## Western blot-Anti- NME2 pAb

**Lane 1:** Mouse kidney tissue lysate  
**Lane 2:** Mouse colon tissue lysate  
**Lane 3:** Rat liver tissue lysate  
**Lane 4:** Rat lung tissue lysate  
**All lanes:** Anti- NME2 at 1:2000 dilution  
 Lysates/proteins at 20-50 µg per lane.  
 Predicted band size: 17 kDa  
 Observed band size: 17 kDa



## Immunohistochemistry-Anti- NME2 pAb

Immunohistochemical analysis of paraffin-embedded rat uterus using anti- NME2 Rabbit Antibody at 1:100 dilution.  
 Perform heat mediated antigen retrieval with Tris-EDTA buffer pH 9.0