

## Anti-STAT3 Rabbit pAb



WL03207

For Research Use Only. Not For Use In Diagnostic Procedures

## Product Information

<b>Product name</b>	Anti-STAT3 Rabbit pAb	
<b>Source</b>	Rabbit	
<b>Species reactivity</b>	Human, Mouse, Rat, Cow	
<b>Tested applications</b>	WB	1:500-1:1000
	IHC	1:200
	IF	1:200

**Cellular localization** Cytoplasm. Nucleus

**Pack size** 50/100/200/500/1000μl

**Storage** Store at -20°C. **Avoid freeze/thaw cycles.**

**Storage buffer** Supplied in 20 mM phosphate (pH 7.5), 150 mM NaCl, 100 μg/ml BSA, 50% glycerol and less than 0.02% sodium azide

## General Information

**Background** The protein encoded by this gene is a member of the STAT protein family. In response to cytokines and growth factors, STAT family members are phosphorylated by the receptor associated kinases, and then form homo- or heterodimers that translocate to the cell nucleus where they act as transcription activators. Stat1 and Stat2 are induced by IFN-α and form a heterodimer which is part of the ISGF3 transcription factor complex. Although early reports indicate Stat3 activation by EGF and IL-6, it has been shown that Stat3β appears to be activated by both while Stat3α is activated by EGF, but not by IL-6. Highest expression of Stat4 is seen in testis and myeloid cells.

**Immunogen** Polyclonal antibody is produced by immunizing animals with recombinant protein of STAT3.

**Purification** Polyclonal antibody was purified by immunogen affinity chromatography.

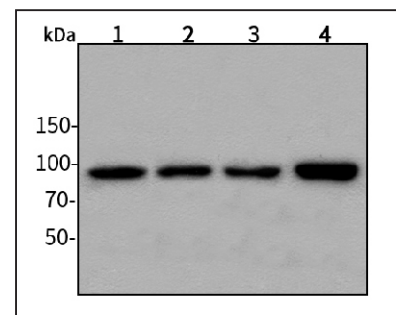
## Anti-STAT3 Rabbit pAb



WL03207

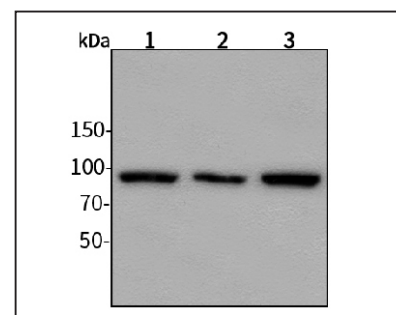
For Research Use Only. Not For Use In Diagnostic Procedures

## Product Images



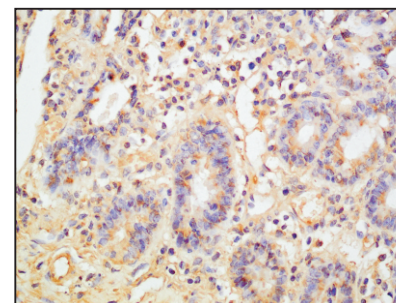
## Western blot-Anti-STAT3 pAb

Lane 1: Human HepG2 cell lysate  
 Lane 2: Human Hela cell lysate  
 Lane 3: Human BGC-823 cell lysate  
 Lane 4: Human MGC-803 cell lysate  
 All lanes: Anti-STAT3 at 1:1000 dilution  
 Lysates/proteins at 20-50 μg per lane.  
 Predicted band size: 88 kDa  
 Observed band size: 92 kDa



## Western blot-Anti-STAT3 pAb

Lane 1: Mouse heart tissue lysate  
 Lane 2: Rat lung tissue lysate  
 Lane 3: Rat stomach tissue lysate  
 All lanes: Anti-STAT3 at 1:1000 dilution  
 Lysates/proteins at 20-50 μg per lane.  
 Predicted band size: 88 kDa  
 Observed band size: 92 kDa



## Immunohistochemistry-Anti-STAT3 pAb

Immunohistochemical analysis of paraffin-embedded rat colon using anti-STAT3 Rabbit Antibody at 1:200 dilution.  
 Perform heat mediated antigen retrieval with Tris-EDTA buffer pH 9.0

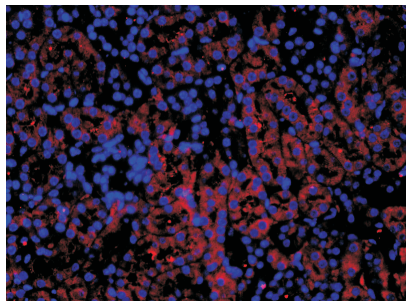
## Anti-STAT3 Rabbit pAb

For Research Use Only. Not For Use In Diagnostic Procedures



WL03207

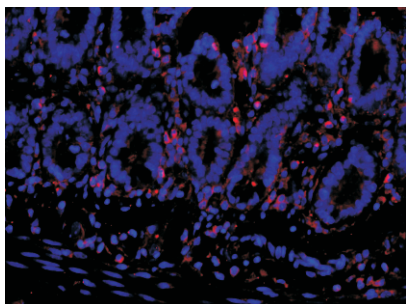
### Product Information



#### Immunofluorescence-Anti-STAT3 pAb

Immunofluorescence analysis of paraffin-embedded mouse kidney using anti-STAT3 Rabbit Antibody at 1:200 dilution.

Perform heat mediated antigen retrieval with Tris-EDTA buffer pH 9.0



#### Immunofluorescence-Anti-STAT3 pAb

Immunofluorescence analysis of paraffin-embedded rat colon using anti-STAT3 Rabbit Antibody at 1:200 dilution.

Perform heat mediated antigen retrieval with Tris-EDTA buffer pH 9.0