

## Anti-GRK2 Rabbit pAb



WL03072

For Research Use Only. Not For Use In Diagnostic Procedures

## Product Information

<b>Product name</b>	Anti-GRK2 Rabbit pAb		
<b>Source</b>	Rabbit		
<b>Species reactivity</b>	Human, Mouse, Rat		
<b>Tested applications</b>	WB	1:500-1:1000	
	IHC	1:100-1:400	
<b>Cellular localization</b>	Cell membrane. Cell projection. Cytoplasm. Membrane. Synapse		
<b>Pack size</b>	50/100/200/500/1000µl		
<b>Storage</b>	Store at -20°C. <b>Avoid freeze/thaw cycles.</b>		
<b>Storage buffer</b>	Supplied in 20 mM phosphate (pH 7.5), 150 mM NaCl, 100 µg/ml BSA, 50% glycerol and less than 0.02% sodium azide		

## General Information

<b>Background</b>	G-protein-coupled receptor kinase 2 (GRK2), also known as beta-adrenergic receptor kinase 1 (beta-ARK1), is a member of the GRK family, which phosphorylates the activated form of G-protein-coupled receptors (GPCRs) and initiates the desensitization process of GPCR. It is an ubiquitous cytosolic enzyme that specifically phosphorylates the activated form of the beta-adrenergic and related G-protein-coupled receptors. PKC phosphorylation enhances GRK2 activity by promoting its membrane localization and by abolishing the inhibitory association of calmodulin.
<b>Immunogen</b>	Polyclonal antibody is produced by immunizing animals with a synthetic peptide of GRK2.
<b>Purification</b>	Polyclonal antibody was purified by immunogen affinity chromatography.

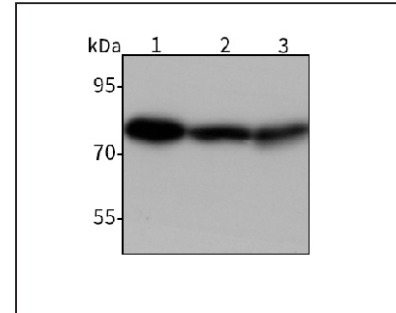
## Anti-GRK2 Rabbit pAb



WL03072

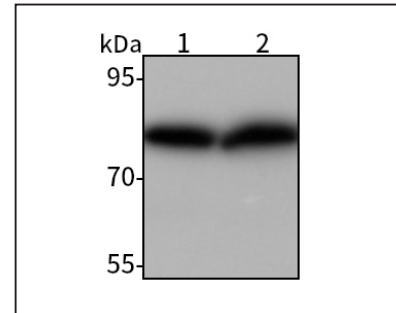
For Research Use Only. Not For Use In Diagnostic Procedures

## Product Images



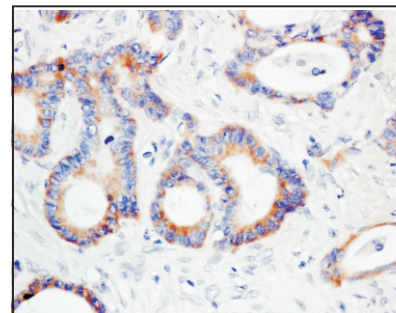
## Western blot-Anti-GRK2 pAb

Lane 1: Human HeLa cell lysate  
 Lane 2: Human HEK293 cell lysate  
 Lane 3: Human HepG2 cell lysate  
 All lanes: Anti-GRK2 at 1:1000 dilution  
 Lysates/proteins at 20-50 µg per lane.  
 Predicted band size: 80 kDa  
 Observed band size: 80 kDa



## Western blot-Anti-GRK2 pAb

Lane 1: Mouse kidney tissue lysate  
 Lane 2: Rat kidney tissue lysate  
 All lanes: Anti-GRK2 at 1:1000 dilution  
 Lysates/proteins at 20-50 µg per lane.  
 Predicted band size: 80 kDa  
 Observed band size: 80 kDa



## Immunohistochemistry-Anti-GRK2 pAb

Immunohistochemical analysis of paraffin-embedded human colon cancer using anti-GRK2 Rabbit Antibody at 1:200 dilution.  
 Perform heat mediated antigen retrieval with Tris-EDTA buffer pH 9.0

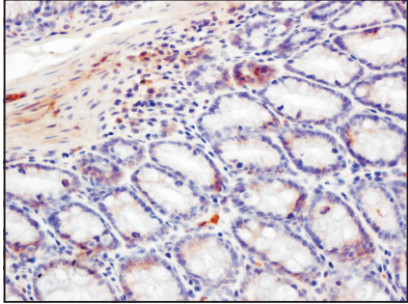
## Anti-GRK2 Rabbit pAb



WL03072

For Research Use Only. Not For Use In Diagnostic Procedures

### Product Images



#### Immunohistochemistry-Anti-GRK2 pAb

Immunohistochemical analysis of paraffin-embedded rat colon using anti-GRK2 Rabbit Antibody at 1:200 dilution.

Perform heat mediated antigen retrieval with Tris-EDTA buffer pH 9.0