

Anti- SREBP2 Rabbit pAb



WLA0494

For Research Use Only. Not For Use In Diagnostic Procedures

Product Information

Product name	Anti- SREBP2 Rabbit pAb	
Source	Rabbit	
Species reactivity	Human, Mouse, Rat	
Tested applications	WB	1:500-1:1000
	IHC, IF	1:50-1:200
Cellular localization	Nucleus and Endoplasmic reticulum membrane. Cytoplasmic vesicle. Golgi apparatus membrane.	
Pack size	50/100/200/500/1000µl	
Storage	Store at -20°C. Avoid freeze/thaw cycles.	
Storage buffer	Supplied in 20 mM phosphate (pH 7.5), 150 mM NaCl, 100 µg/ml	
	BSA, 50% glycerol and less than 0.02% sodium azide	

General Information

Background	SREBF2, Also known as BHLHD2, it belongs to the SREBP family and is a widely expressed member of transcription factors that control cholesterol homeostasis by regulating the transcription of steroid regulated genes. It can bind to sterol regulatory element 1 (SRE-1) (5'-TCACCCAC-3') found in the flanking regions of LDRL and HMG-COA synthase genes. SREBF2 is ubiquitous in adult and fetal tissues. SREBF2 expression dynamically regulates nutrition and hormonal cues.
Immunogen	Polyclonal antibody is produced by immunizing animals with a synthetic peptide of SREBP2.
Purification	Polyclonal antibody was purified by immunogen affinity chromatography.

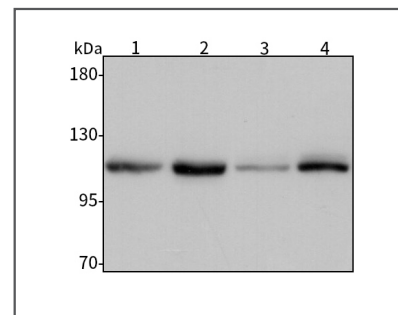
Anti- SREBP2 Rabbit pAb



WLA0494

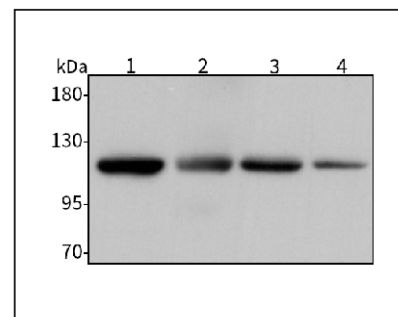
For Research Use Only. Not For Use In Diagnostic Procedures

Product Images



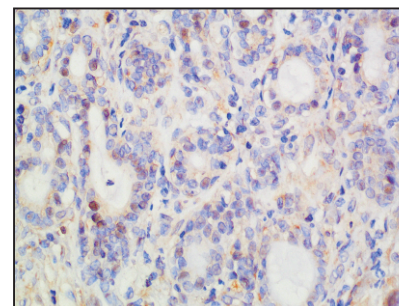
Western blot-Anti- SREBP2 pAb

Lane 1: Human gastric adenocarcinoma tissue lasate
Lane 2: Human glioma tissue lasate
Lane 3: Human breast cancer tissue lasate
Lane 4: Human ovarian cancer tissue lasate
All lanes: Anti- SREBP2 at 1:1000 dilution
 Lysates/proteins at 20-50 µg per lane.
 Predicted band size: 126 kDa
 Observed band size: 126 kDa



Western blot-Anti- SREBP2 pAb

Lane 1: Mouse kidney tissue lysate
Lane 2: Mouse liver tissue lysate
Lane 3: Rat lung tissue lysate
Lane 4: Rat spleen tissue lysate
All lanes: Anti- SREBP2 at 1:1000 dilution
 Lysates/proteins at 20-50 µg per lane.
 Predicted band size: 126 kDa
 Observed band size: 126 kDa



Immunohistochemistry-Anti- SREBP2 pAb

Immunohistochemical analysis of paraffin-embedded human esophageal cancer using anti- SREBP2 Rabbit Antibody at 1:100 dilution.
 Perform heat mediated antigen retrieval with Tris-EDTA buffer pH 9.0

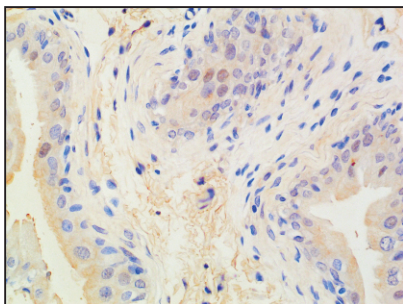
Anti- SREBP2 Rabbit pAb



WLA0494

For Research Use Only. Not For Use In Diagnostic Procedures

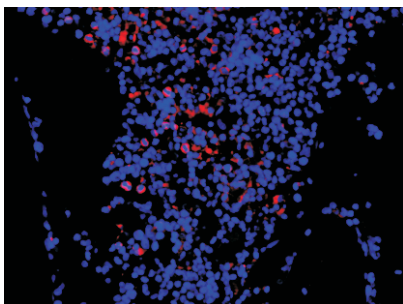
Product Information



Immunohistochemistry-Anti- SREBP2 pAb

Immunohistochemical analysis of paraffin-embedded rat bladder using anti- SREBP2 Rabbit Antibody at 1:100 dilution.

Perform heat mediated antigen retrieval with Tris-EDTA buffer pH 9.0



Immunofluorescence-Anti-SREBP2 pAb

Immunofluorescence analysis of paraffin-embedded mouse bone marrow using anti- SREBP2 Rabbit Antibody at 1:100 dilution.

Perform heat mediated antigen retrieval with Tris-EDTA buffer pH 9.0