

## Anti-TAP1 Rabbit pAb



WL04385

For Research Use Only. Not For Use In Diagnostic Procedures

## Product Information

<b>Product name</b>	Anti-TAP1 Rabbit pAb	
<b>Source</b>	Rabbit	
<b>Species reactivity</b>	Human, Mouse, Rat	
<b>Tested applications</b>	WB	1:500-1:1000
	IF	1:100-1:200
<b>Molecular Wt.</b>	Predicted band size: 81kDa	
	Observed band size: 70-81 kDa	
<b>Cellular localization</b>	Endoplasmic reticulum membrane.	
<b>Pack size</b>	50/100/200/500/1000μl	
<b>Storage</b>	Store at -20°C. <b>Avoid freeze/thaw cycles.</b>	
<b>Storage buffer</b>	Supplied in 20 mM phosphate (pH 7.5), 150 mM NaCl, 100 μg/ml BSA, 50% glycerol and less than 0.02% sodium azide	

## General Information

<b>Background</b>	TAP1, is a member of the ATP-binding cassette (ABC) family of transmembrane transporters and is an essential component of the major histocompatibility complex (MHC) class I antigen-presenting pathway. TAP is involved in the transport of antigens from the cytoplasm to the endoplasmic reticulum for association with MHC class I molecules. It also acts as a molecular scaffold for the final stage of MHC class I folding. Defects in TAP1 are a cause of bare lymphocyte syndrome type 1 (BLS1).
<b>Immunogen</b>	Polyclonal antibody is produced by immunizing animals with a synthetic peptide of TAP1.
<b>Purification</b>	Polyclonal antibody was purified by immunogen affinity chromatography.

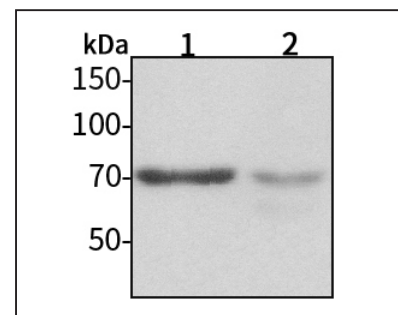
## Anti-TAP1 Rabbit pAb



WL04385

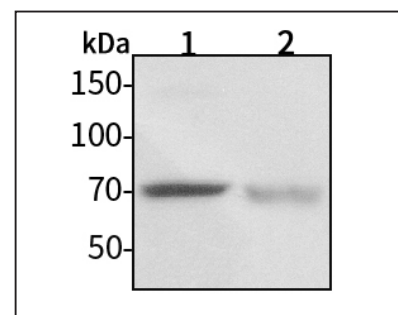
For Research Use Only. Not For Use In Diagnostic Procedures

## Product Images



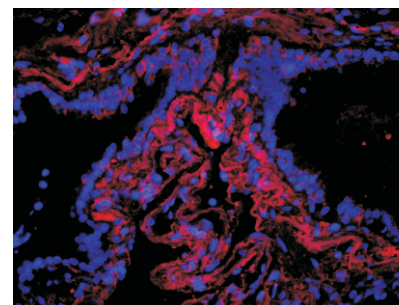
## Western blot-Anti-TAP1 pAb

**Lane 1:** Human Hela cell lysate 30μg  
**Lane 2:** Human MCF-7 cell lysate 30μg  
**Separation gel:** 8% polyacrylamide  
**Electrophoresis:** 100V, 4°C, 3h  
**Transmembrane:** 100V, 4°C, 1h  
**Blocking:** 5% w/v nonfat dry milk, 1×TBST, at RT with gentle shaking  
**Primary antibody:** 1:1000 in blocking buffer, 4°C, overnight  
**Secondary antibody (WLA023a) :** 1:5000-1:10000, 45min  
**Detection:** ECL, 30s-2min



## Western blot-Anti-TAP1 pAb

**Lane 1:** Mouse liver tissue lysate 30μg  
**Lane 2:** Rat lung tissue lysate 30μg  
**Separation gel:** 8% polyacrylamide  
**Electrophoresis:** 100V, 4°C, 3h  
**Transmembrane:** 100V, 4°C, 1h  
**Blocking:** 5% w/v nonfat dry milk, 1×TBST, at RT with gentle shaking  
**Primary antibody:** 1:1000 in blocking buffer, 4°C, overnight  
**Secondary antibody (WLA023a) :** 1:5000-1:10000, 45min  
**Detection:** ECL, 30s-2min



## Immunofluorescence-Anti-TAP1 pAb

Immunofluorescence analysis of paraffin-embedded human lung cancer using anti-TAP1 Rabbit Antibody at 1:100 dilution.  
 Perform heat mediated antigen retrieval with Tris-EDTA buffer pH 9.0

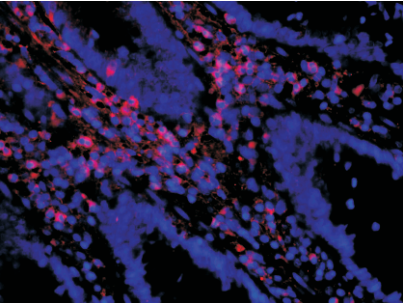
Anti-TAP1 Rabbit pAb



WL04385

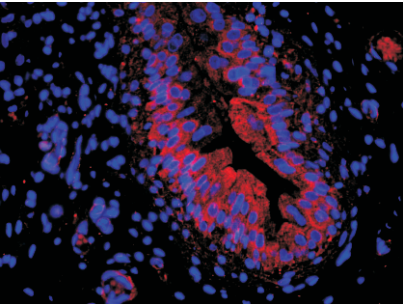
For Research Use Only. Not For Use In Diagnostic Procedures

Product Information



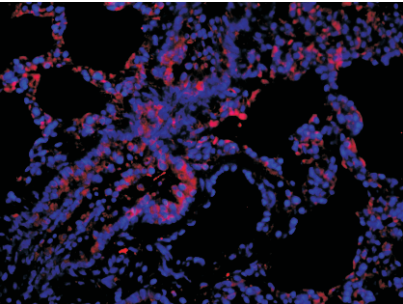
Immunofluorescence-Anti-TAP1 pAb

Immunofluorescence analysis of paraffin-embedded human colon cancer using anti-TAP1 Rabbit Antibody at 1:100 dilution.  
Perform heat mediated antigen retrieval with Tris-EDTA buffer pH 9.0



Immunofluorescence-Anti-TAP1 pAb

Immunofluorescence analysis of paraffin-embedded rat bladder using anti-TAP1 Rabbit Antibody at 1:100 dilution.  
Perform heat mediated antigen retrieval with Tris-EDTA buffer pH 9.0



Immunofluorescence-Anti-TAP1 pAb

Immunofluorescence analysis of paraffin-embedded rat lung using anti-TAP1 Rabbit Antibody at 1:100 dilution.  
Perform heat mediated antigen retrieval with Tris-EDTA buffer pH 9.0

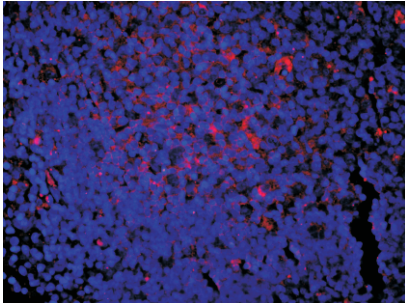
Anti-TAP1 Rabbit pAb



WL04385

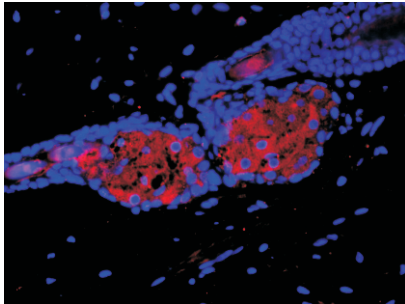
For Research Use Only. Not For Use In Diagnostic Procedures

Product Information



Immunofluorescence-Anti-TAP1 pAb

Immunofluorescence analysis of paraffin-embedded rat lymph gland using anti-TAP1 Rabbit Antibody at 1:100 dilution.  
Perform heat mediated antigen retrieval with Tris-EDTA buffer pH 9.0



Immunofluorescence-Anti-TAP1 pAb

Immunofluorescence analysis of paraffin-embedded rat skin using anti-TAP1 Rabbit Antibody at 1:100 dilution.  
Perform heat mediated antigen retrieval with Tris-EDTA buffer pH 9.0