

## Anti-Collagen II Rabbit pAb



WL03082

For Research Use Only. Not For Use In Diagnostic Procedures

## Product Information

<b>Product name</b>	Anti-Collagen II Rabbit pAb	
<b>Source</b>	Rabbit	
<b>Species reactivity</b>	Human, Mouse, Rat	
<b>Tested applications</b>	WB	1:1000-1:2000
	IHC	1:500
	IF	1:500
<b>Cellular localization</b>	Secreted, extracellular space, extracellular matrix	
<b>Pack size</b>	50/100/200/500/1000μl	
<b>Storage</b>	Store at -20°C. <b>Avoid freeze/thaw cycles.</b>	
<b>Storage buffer</b>	Supplied in 20 mM phosphate (pH 7.5), 150 mM NaCl, 100 μg/ml	
	BSA, 50% glycerol and less than 0.02% sodium azide	

## General Information

<b>Background</b>	Collagen II is the alpha-1 chain of type II collagen, a fibrillar collagen found in cartilage and the vitreous humor of the eye. Mutations in this gene are associated with achondrogenesis, chondrodysplasia, early onset familial osteoarthritis, SED congenita, Langer-Saldino achondrogenesis, Kniest dysplasia, Stickler syndrome type I, and spondyloepimetaphyseal dysplasia Strudwick type. In addition, defects in processing chondrocalcin, a calcium binding protein that is the C-propeptide of this collagen molecule, are also associated with chondrodysplasia.
<b>Immunogen</b>	Polyclonal antibody is produced by immunizing animals with a synthetic peptide of Collagen II.
<b>Purification</b>	Polyclonal antibody was purified by protein A affinity chromatography.

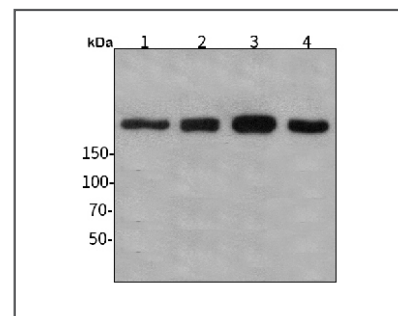
## Anti-Collagen II Rabbit pAb



WL03082

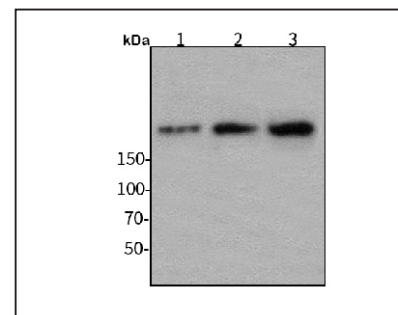
For Research Use Only. Not For Use In Diagnostic Procedures

## Product Images



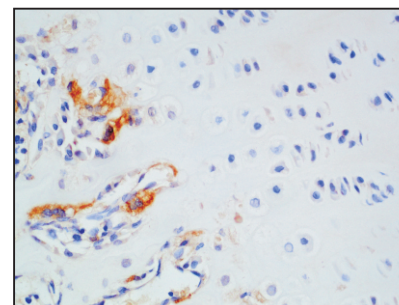
Western blot-Anti-Collagen II pAb

**Lane 1:** Human HepG2 cell lysate  
**Lane 2:** Human Hela cell lysate  
**Lane 3:** Human BGC-823 cell lysate  
**Lane 4:** Human MGC-803 cell lysate  
**All lanes:** Anti-Collagen II at 1:1000 dilution  
 Lysates/proteins at 20-50 μg per lane.  
 Predicted band size: 141 kDa  
 Observed band size: 190 kDa



Western blot-Anti-Collagen II pAb

**Lane 1:** Mouse heart tissue lysate  
**Lane 2:** Mouse liver tissue lysate  
**Lane 3:** Rat brain tissue lysate  
**All lanes:** Anti-Collagen II at 1:1000 dilution  
 Lysates/proteins at 20-50 μg per lane.  
 Predicted band size: 141 kDa  
 Observed band size: 190 kDa



Immunohistochemistry-Anti-Collagen II pAb

Immunohistochemical analysis of paraffin-embedded mouse femur using anti-Collagen II Rabbit Antibody at 1:500 dilution.  
 Perform heat mediated antigen retrieval with Tris-EDTA buffer pH 9.0

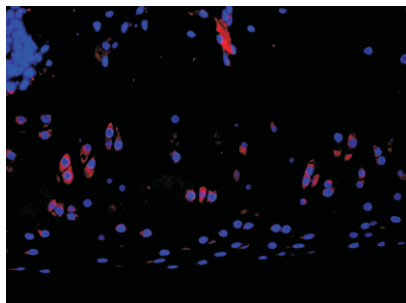
## Anti-Collagen II Rabbit pAb



WL03082

For Research Use Only. Not For Use In Diagnostic Procedures

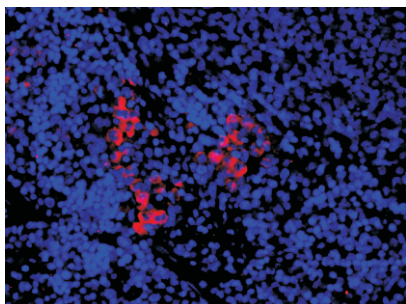
### Product Information



#### Immunofluorescence-Anti-Collagen II pAb

Immunofluorescence analysis of paraffin-embedded rat femur using anti-Collagen II Rabbit Antibody at 1:500 dilution.

Perform heat mediated antigen retrieval with Tris-EDTA buffer pH 9.0



#### Immunofluorescence-Anti-Collagen II pAb

Immunofluorescence analysis of paraffin-embedded rat spleen using anti-Collagen II Rabbit Antibody at 1:500 dilution.

Perform heat mediated antigen retrieval with Tris-EDTA buffer pH 9.0