

## Anti-Chk1 Rabbit pAb



WL01674

For Research Use Only. Not For Use In Diagnostic Procedures

## Product Information

<b>Product name</b>	Anti-Chk1 Rabbit pAb	
<b>Source</b>	Rabbit	
<b>Species reactivity</b>	Human, Mouse, Rat	
<b>Tested applications</b>	WB	1:1000-1:2000
	IHC	1:100-1:200
	IF	1:500
<b>Cellular localization</b>	Nucleus. Chromosome. Cytoplasm. Cytoskeleton	
<b>Pack size</b>	50/100/200/500/1000μl	
<b>Storage</b>	Store at -20°C. <b>Avoid freeze/thaw cycles.</b>	
<b>Storage buffer</b>	Supplied in 20 mM phosphate (pH 7.5), 150 mM NaCl, 100 μg/ml	
	BSA, 50% glycerol and less than 0.02% sodium azide	

## General Information

**Background**

Cell cycle events are regulated by the sequential activation and deactivation of cyclin dependent kinases (Cdks) and by proteolysis of cyclins. Chk1 and Chk2 are involved in these processes as regulators of Cdks. It is required for checkpoint mediated cell cycle arrest in response to DNA damage or the presence of unreplicated DNA. Chk1 exerts its checkpoint mechanism on the cell cycle, in part, by regulating the cdc25 family of phosphatases. Chk1 phosphorylation of cdc25A targets it for proteolysis and inhibits its activity through 14-3-3 binding. Activated Chk1 can inactivate cdc25C via phosphorylation at Ser216, blocking the activation of cdc2 and transition into mitosis.

**Immunogen**

Polyclonal antibody is produced by immunizing animals with a synthetic peptide of Chk1.

**Purification**

Polyclonal antibody was purified by Protein A affinity chromatography.

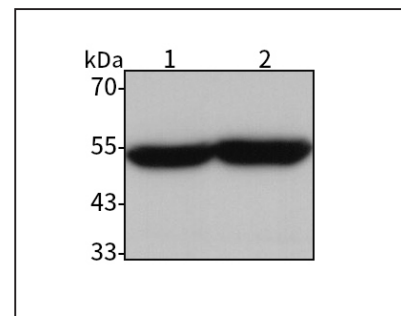
## Anti-Chk1 Rabbit pAb



WL01674

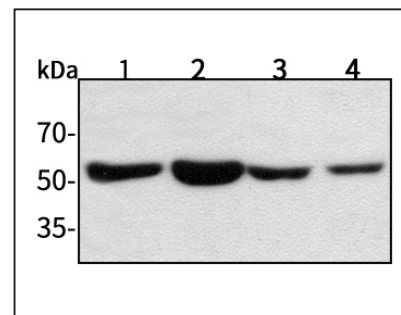
For Research Use Only. Not For Use In Diagnostic Procedures

## Product Images



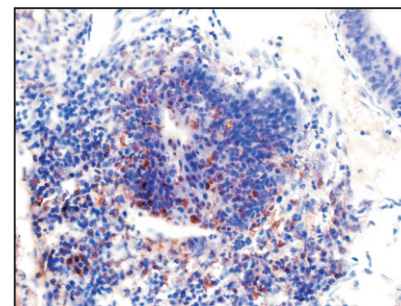
## Western blot-Anti-Chk1 pAb

Lane 1: Human HL-60 cell lysate  
 Lane 2: Human Hela cell lysate  
 All lanes: Anti-Chk1 at 1:1000 dilution  
 Lysates/proteins at 20-50 μg per lane.  
 Predicted band size: 54 kDa  
 Observed band size: 54 kDa



## Western blot-Anti-Chk1 pAb

Lane 1: Mouse kidney tissue lysate  
 Lane 2: Mouse heart tissue lysate  
 Lane 3: Rat liver tissue lysate  
 Lane 4: Rat brain tissue lysate  
 All lanes: Anti-Chk1 at 1:1000 dilution  
 Lysates/proteins at 20-50 μg per lane.  
 Predicted band size: 54 kDa  
 Observed band size: 54 kDa



## Immunohistochemistry-Anti-Chk1 pAb

Immunohistochemical analysis of paraffin-embedded human colon cancer using anti-Chk1 Rabbit Antibody at 1:200 dilution.  
 Perform heat mediated antigen retrieval with Tris-EDTA buffer pH 9.0

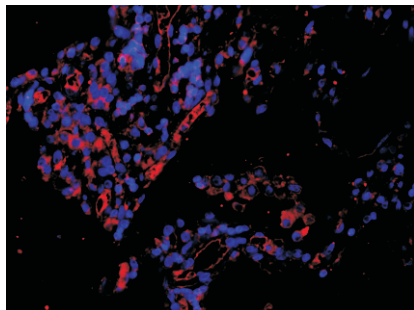
## Anti-Chk1 Rabbit pAb



WL01674

For Research Use Only. Not For Use In Diagnostic Procedures

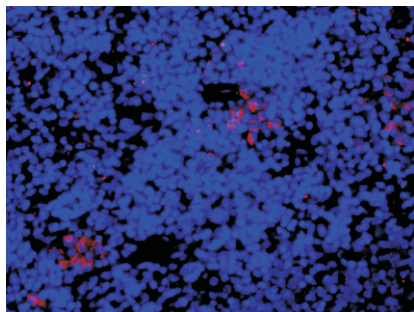
### Product Information



#### Immunofluorescence-Anti-Chk1 pAb

Immunofluorescence analysis of paraffin-embedded human lung cancer using anti-Chk1 Rabbit Antibody at 1:500 dilution.

Perform heat mediated antigen retrieval with Tris-EDTA buffer pH 9.0



#### Immunofluorescence-Anti-Chk1 pAb

Immunofluorescence analysis of paraffin-embedded rat spleen using anti-Chk1 Rabbit Antibody at 1:500 dilution.

Perform heat mediated antigen retrieval with Tris-EDTA buffer pH 9.0