

Anti-STAT3 Rabbit pAb



WL01836

For Research Use Only. Not For Use In Diagnostic Procedures

Product Information

Product name	Anti-STAT3 Rabbit pAb	
Source	Rabbit	
Species reactivity	Human, Mouse, Rat, Rabbit	
Tested applications	Western blot	1:500-1:1000
	Immunohistochemistry	1:100-1:300

Cellular localization Cytoplasm. Nucleus

Pack size 50/100/200/500/1000μl

Storage Store at -20°C. **Avoid freeze/thaw cycles.**

Storage buffer Supplied in 20 mM phosphate (pH 7.5), 150 mM NaCl, 100 μg/ml BSA, 50% glycerol and less than 0.02% sodium azide

General Information

Background The protein encoded by this gene is a member of the STAT protein family. In response to cytokines and growth factors, STAT family members are phosphorylated by the receptor associated kinases, and then form homo- or heterodimers that translocate to the cell nucleus where they act as transcription activators. Stat1 and Stat2 are induced by IFN-α and form a heterodimer which is part of the ISGF3 transcription factor complex. Although early reports indicate Stat3 activation by EGF and IL-6, it has been shown that Stat3β appears to be activated by both while Stat3α is activated by EGF, but not by IL-6. Highest expression of Stat4 is seen in testis and myeloid cells.

Immunogen Polyclonal antibody is produced by immunizing animals with a recombinant protein of STAT3.

Purification Polyclonal antibody was purified by immunogen affinity chromatography.

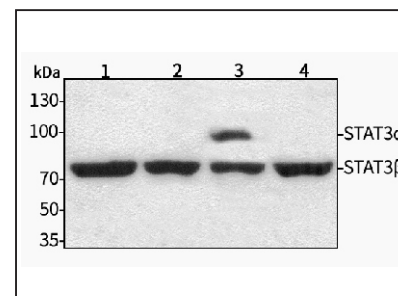
Anti-STAT3 Rabbit pAb



WL01836

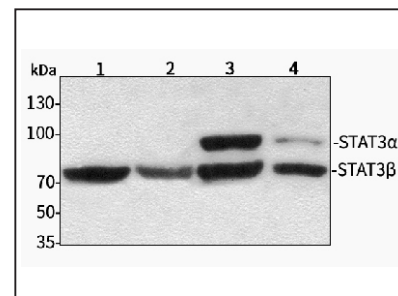
For Research Use Only. Not For Use In Diagnostic Procedures

Product Images



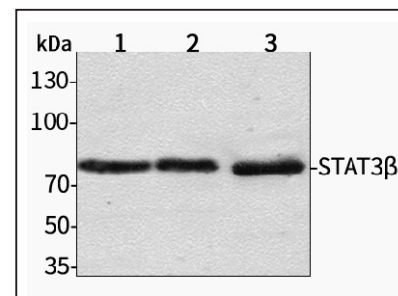
Western blot-Anti-STAT3 pAb

Lane 1: Human MGC-803 cell lysate
 Lane 2: Human SGC-7901 cell lysate
 Lane 3: Human MCF-7 cell lysate
 Lane 4: Human HEK-293 cell lysate
 All lanes: Anti-STAT3 at 1:1000 dilution
 Lysates/proteins at 20-50 μg per lane.
 Predicted band size: 88 kDa
 Observed band size: 92 kDa



Western blot-Anti-STAT3 pAb

Lane 1: Mouse kidney tissue lysate
 Lane 2: Mouse heart tissue lysate
 Lane 3: Rat liver tissue lysate
 Lane 4: Rat brain tissue lysate
 All lanes: Anti-STAT3 at 1:1000 dilution
 Lysates/proteins at 20-50 μg per lane.
 Predicted band size: 88 kDa
 Observed band size: 92 kDa



Western blot-Anti-STAT3 pAb

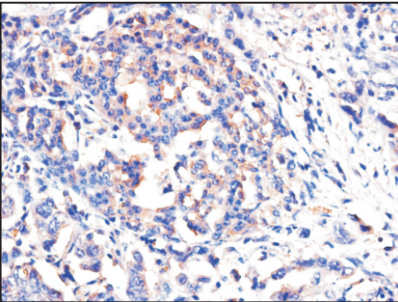
Lane 1: Rabbit liver tissue lysate
 Lane 2: Rabbit spleen tissue lysate
 Lane 3: Rabbit stomach tissue lysate
 All lanes: Anti-STAT3 at 1:1000 dilution
 Lysates/proteins at 20-50 μg per lane.
 Predicted band size: 88 kDa
 Observed band size: 92 kDa

Anti-STAT3 Rabbit pAb

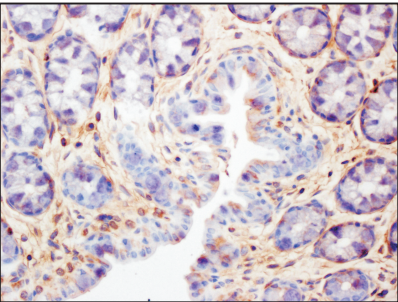


WL01836

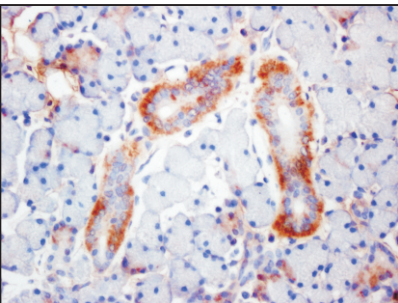
Product Information



Immunohistochemistry-Anti-STAT3 pAb
Sample: Human pancreatic cancer tissue
Antigen retrieval: Proteinase K
Primary antibody: 1:150, 4°C, overnight
Secondary antibody-Biotin: 1:150, 37°C, 1h
Streptavidin-HRP: 1:200, 37°C, 30min
Visualization: DAB



Immunohistochemistry-Anti-STAT3 pAb
Sample: Rabbit colon tissue
Antigen retrieval: Proteinase K
Primary antibody: 1:200, 4°C, overnight
Secondary antibody-Biotin: 1:150, 37°C, 1h
Streptavidin-HRP: 1:200, 37°C, 30min
Visualization: DAB



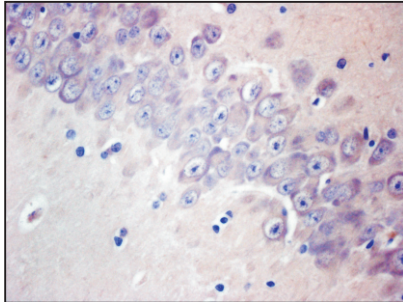
Immunohistochemistry-Anti-STAT3 pAb
Sample: Rabbit submaxillary glands tissue
Antigen retrieval: Proteinase K
Primary antibody: 1:200, 4°C, overnight
Secondary antibody-Biotin: 1:150, 37°C, 1h
Streptavidin-HRP: 1:200, 37°C, 30min
Visualization: DAB

Anti-STAT3 Rabbit pAb

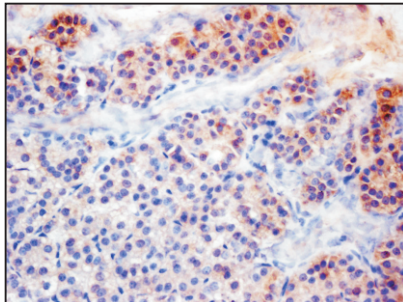


WL01836

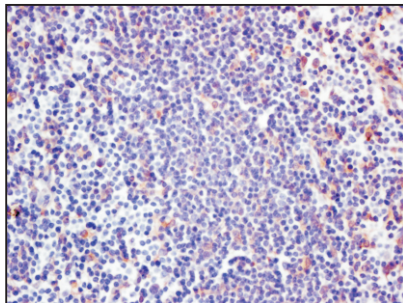
Product Information



Immunohistochemistry-Anti-STAT3 pAb
Sample: Rabbit brain tissue
Antigen retrieval: Proteinase K
Primary antibody: 1:200, 4°C, overnight
Secondary antibody-Biotin: 1:150, 37°C, 1h
Streptavidin-HRP: 1:200, 37°C, 30min
Visualization: DAB



Immunohistochemistry-Anti-STAT3 pAb
Sample: Rabbit adrenal gland tissue
Antigen retrieval: Proteinase K
Primary antibody: 1:200, 4°C, overnight
Secondary antibody-Biotin: 1:150, 37°C, 1h
Streptavidin-HRP: 1:200, 37°C, 30min
Visualization: DAB



Immunohistochemistry-Anti-STAT3 pAb
Sample: Rabbit thymus tissue
Antigen retrieval: Proteinase K
Primary antibody: 1:200, 4°C, overnight
Secondary antibody-Biotin: 1:150, 37°C, 1h
Streptavidin-HRP: 1:200, 37°C, 30min
Visualization: DAB