

Anti-TGFβ R1 Rabbit pAb



WL03150

For Research Use Only. Not For Use In Diagnostic Procedures

Product Information

Product name	Anti-TGFβ R1 Rabbit pAb	
Source	Rabbit	
Species reactivity	Human, Mouse, Rat	
Tested applications	Western blot	1:1000-1:2000
	<i>*Suggested working dilutions are given as a guide only. It is recommended that the user titrates the product for use in their own experiment using appropriate negative and positive controls.</i>	
Molecular Wt.	55 kDa	
Pack size	50/100/200/500/1000μl	
Storage	Store at -20°C. Avoid freeze/thaw cycles.	
Storage buffer	Supplied in 20 mM phosphate (pH 7.5), 150 mM NaCl, 100 μg/ml BSA, 50% glycerol and less than 0.02% sodium azide	

General Information

Background	The TGFβ RI forms a heteromeric complex with type II TGF-beta receptors when bound to TGF-beta, transducing the TGF-beta signal from the cell surface to the cytoplasm. TGFβ RI is a 503 amino acid single-pass type I membrane protein that is expressed ubiquitously and, with TGFβ RII, functions as a receptor for TGFβ. Mutations in this gene have been associated with Loeys-Dietz aortic aneurysm syndrome (LDAS).
Immunogen	Polyclonal antibody is produced by immunizing animals with a synthetic peptide of TGFβ R1.
Purification	Polyclonal antibody was purified by Protein A affinity chromatography.

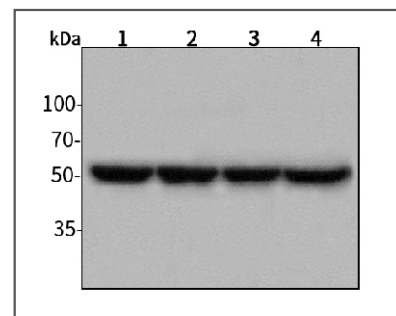
Anti-TGFβ R1 Rabbit pAb



WL03150

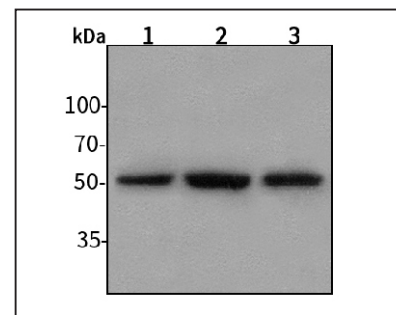
For Research Use Only. Not For Use In Diagnostic Procedures

Product Images



Western blot-Anti-TGFβ R1 pAb

Lane 1: Human HepG2 cell lysate 30μg
 Lane 2: Human Hela cell lysate 30μg
 Lane 3: Human BGC-823 cell lysate 30μg
 Lane 4: Human MGC-803 cell lysate 30μg
 Separation gel: 8% polyacrylamide
 Electrophoresis: 100V, 4°C, 3h
 Transmembrane: 100V, 4°C, 1h
 Blocking: 5% w/v nonfat dry milk, 1 × TBST, at RT with gentle shaking
 Primary antibody: 1:1000 in blocking buffer, 4°C, overnight
 Secondary antibody (WLA023a) : 1:5000-1:10000, 45min
 Detection: ECL, 30s-2min



Western blot-Anti-TGFβ R1 pAb

Lane 1: Mouse brain tissue lysate 30μg
 Lane 2: Rat colon tissue lysate 30μg
 Lane 3: Rat stomach tissue lysate 30μg
 Separation gel: 8% polyacrylamide
 Electrophoresis: 100V, 4°C, 3h
 Transmembrane: 100V, 4°C, 1h
 Blocking: 5% w/v nonfat dry milk, 1 × TBST, at RT with gentle shaking
 Primary antibody: 1:1000 in blocking buffer, 4°C, overnight
 Secondary antibody (WLA023a) : 1:5000-1:10000, 45min
 Detection: ECL, 30s-2min