

Anti-PKC  $\theta$  Rabbit pAb

WL02732

For Research Use Only. Not For Use In Diagnostic Procedures

## Product Information

<b>Product name</b>	Anti-PKC $\theta$ Rabbit pAb	
<b>Source</b>	Rabbit	
<b>Species reactivity</b>	Human, Mouse, Rat	
<b>Tested applications</b>	WB	1:1000-1:2000
	IHC	1:100-1:400
	IF	1:500
<b>Cellular localization</b>	Cell membrane, Cytoplasm, Membrane	
<b>Pack size</b>	50/100/200/500/1000 $\mu$ l	
<b>Storage</b>	Store at -20°C. <b>Avoid freeze/thaw cycles.</b>	
<b>Storage buffer</b>	Supplied in 20 mM phosphate (pH 7.5), 150 mM NaCl, 100 $\mu$ g/ml	
	BSA, 50% glycerol and less than 0.02% sodium azide	

## General Information

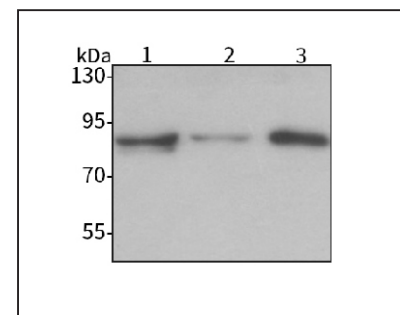
<b>Background</b>	Protein kinase C (PKC) is a family of serine- and threonine-specific protein kinases that can be activated by the second messenger diacylglycerol. PKC family members phosphorylate a wide variety of protein targets and are known to be involved in diverse cellular signaling pathways. PKC family members also serve as major receptors for phorbol esters, a class of tumor promoters. Each member of the PKC family has a specific expression profile and is believed to play a distinct role. The protein encoded by this gene is one of the PKC family members. It is a calcium-independent and phospholipid-dependent protein kinase. PKC $\theta$ has been shown to phosphorylate CARD11 as part of the NF- $\kappa$ B signaling pathway.
<b>Immunogen</b>	Polyclonal antibody is produced by immunizing animals with a synthetic peptide of PKC $\theta$ .
<b>Purification</b>	Polyclonal antibody was purified by Protein A affinity chromatography.

Anti-PKC  $\theta$  Rabbit pAb

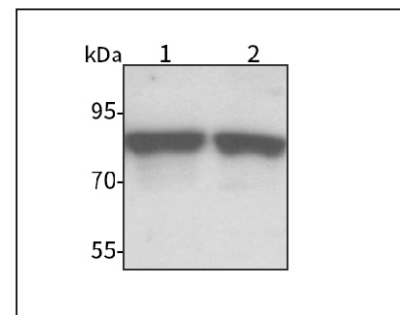
WL02732

For Research Use Only. Not For Use In Diagnostic Procedures

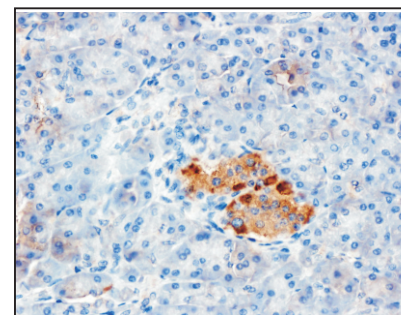
## Product Images

Western blot-Anti-PKC  $\theta$  pAb

**Lane 1:** Human Hela cell lysate  
**Lane 2:** Human BxPC-3 cell lysate  
**Lane 3:** Human A2780 cell lysate  
**All lanes:** Anti-PKC  $\theta$  at 1:1000 dilution  
 Lysates/proteins at 20-50  $\mu$ g per lane.  
 Predicted band size: 82 kDa  
 Observed band size: 82 kDa

Western blot-Anti-PKC  $\theta$  pAb

**Lane 1:** Mouse lung tissue lysate  
**Lane 2:** Rat lung tissue lysate  
**All lanes:** Anti-PKC  $\theta$  at 1:1000 dilution  
 Lysates/proteins at 20-50  $\mu$ g per lane.  
 Predicted band size: 82 kDa  
 Observed band size: 82 kDa

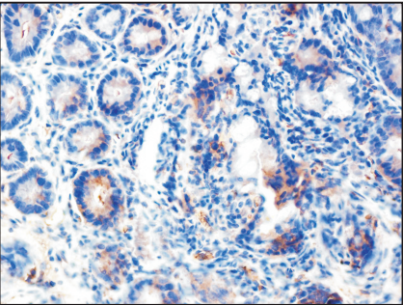
Immunohistochemistry-Anti-PKC  $\theta$  pAb

Immunohistochemical analysis of paraffin-embedded human pancreatic cancer using anti-PKC  $\theta$  Rabbit Antibody at 1:200 dilution. Perform heat mediated antigen retrieval with Tris-EDTA buffer pH 9.0

## Anti-PKC $\theta$ Rabbit pAb

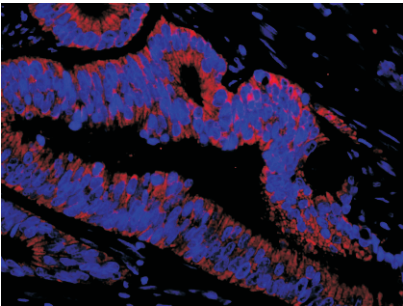
For Research Use Only. Not For Use In Diagnostic Procedures

### Product Images



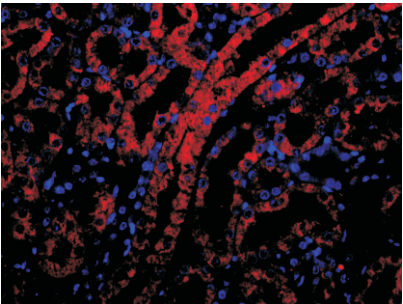
#### Immunohistochemistry-Anti-PKC $\theta$ pAb

Immunohistochemical analysis of paraffin-embedded rat colon using anti-PKC  $\theta$  Rabbit Antibody at 1:200 dilution.  
Perform heat mediated antigen retrieval with Tris-EDTA buffer pH 9.0



#### Immunofluorescence-Anti-PKC $\theta$ pAb

Immunofluorescence analysis of paraffin-embedded mouse uterus using anti-PKC  $\theta$  Rabbit Antibody at 1:500 dilution.  
Perform heat mediated antigen retrieval with Tris-EDTA buffer pH 9.0



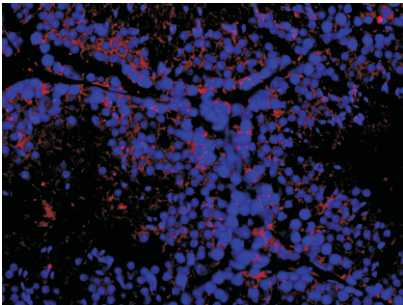
#### Immunofluorescence-Anti-PKC $\theta$ pAb

Immunofluorescence analysis of paraffin-embedded mouse kidney using anti-PKC  $\theta$  Rabbit Antibody at 1:500 dilution.  
Perform heat mediated antigen retrieval with Tris-EDTA buffer pH 9.0

## Anti-PKC $\theta$ Rabbit pAb

For Research Use Only. Not For Use In Diagnostic Procedures

### Product Images



#### Immunofluorescence-Anti-PKC $\theta$ pAb

Immunofluorescence analysis of paraffin-embedded mouse testis using anti-PKC  $\theta$  Rabbit Antibody at 1:500 dilution.  
Perform heat mediated antigen retrieval with Tris-EDTA buffer pH 9.0