

## Anti-VGLUT1 Rabbit pAb



WL05250

For Research Use Only. Not For Use In Diagnostic Procedures

## Product Information

<b>Product name</b>	Anti-VGLUT1 Rabbit pAb		
<b>Source</b>	Rabbit		
<b>Species reactivity</b>	Human		
<b>Tested applications</b>	Western blot	1:1000-1:2000	
	<i>*Suggested working dilutions are given as a guide only. It is recommended that the user titrates the product for use in their own experiment using appropriate negative and positive controls.</i>		
<b>Molecular Wt.</b>	62 kDa		
<b>Pack size</b>	50/100/200/500/1000μl		
<b>Storage</b>	Store at -20°C. <b>Avoid freeze/thaw cycles.</b>		
<b>Storage buffer</b>	Supplied in 20 mM phosphate (pH 7.5), 150 mM NaCl, 100 μg/ml BSA, 50% glycerol and less than 0.02% sodium azide		

## General Information

<b>Background</b>	VGLUT1 is vesicle-bound, sodium-dependent phosphate transporter that is specifically expressed in the neuron-rich regions of the brain. It is preferentially associated with the membranes of synaptic vesicles and functions in glutamate transport.
<b>Immunogen</b>	Polyclonal antibody is produced by immunizing animals with a synthetic peptide of VGLUT1.
<b>Purification</b>	Polyclonal antibody was purified by Protein A affinity chromatography.

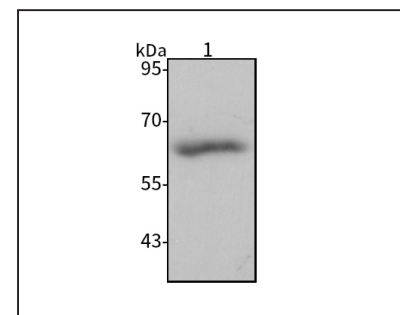
## Anti-VGLUT1 Rabbit pAb



WL05250

For Research Use Only. Not For Use In Diagnostic Procedures

## Product Images



## Western blot-Anti-VGLUT1 pAb

Lane 1: Human SH-SY5Y cell lysate 20μg  
 Separation gel: 8% polyacrylamide  
 Electrophoresis: 100V, 4°C, 3h  
 Transmembrane: 100V, 4°C, 1h  
 Blocking: 5% w/v nonfat dry milk, 1 × TBST, at RT with gentle shaking  
 Primary antibody: 1:1000 in blocking buffer, 4°C, overnight  
 Secondary antibody (WLA023a) : 1:5000-1:10000, 45min  
 Detection: ECL, 30s-2min