

Anti-KISS1 Rabbit pAb



WL02651

For Research Use Only. Not For Use In Diagnostic Procedures

Product Information

Product name	Anti-KISS1 Rabbit pAb	
Source	Rabbit	
Species reactivity	Human, Mouse, Rat	
Tested applications	WB	1:1000-1:2000
	IHC, IF	1:200-1:500
Cellular localization	Secreted	
Pack size	50/100/200/500/1000μl	
Storage	Store at -20°C. Avoid freeze/thaw cycles.	
Storage buffer	Supplied in 20 mM phosphate (pH 7.5), 150 mM NaCl, 100 μg/ml	
	BSA, 50% glycerol and less than 0.02% sodium azide	

General Information

Background	Kisspeptin (formerly known as metastin) is a protein that is encoded by the KISS1 gene in humans. Kisspeptin is a G-protein coupled receptor ligand for GPR54. Transcripts for human KiSS-1 are predominantly expressed in the brain and placenta. KiSS-1 protein contains a polyproline-rich domain (SH3 ligand) and a putative protein kinase C-α phosphorylation site. KiSS-1 may regulate events downstream of cell-matrix adhesion in mechanisms involving cytoskeletal reorganization. Kisspeptin can stimulate secretion of aldosterone and the release of insulin.
Immunogen	Polyclonal antibody is produced by immunizing animals with a synthetic peptide of KISS1.
Purification	Polyclonal antibody was purified by Protein A affinity chromatography.

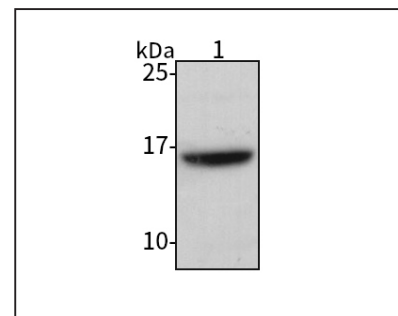
Anti-KISS1 Rabbit pAb



WL02651

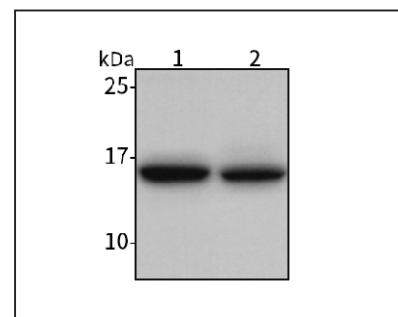
For Research Use Only. Not For Use In Diagnostic Procedures

Product Images



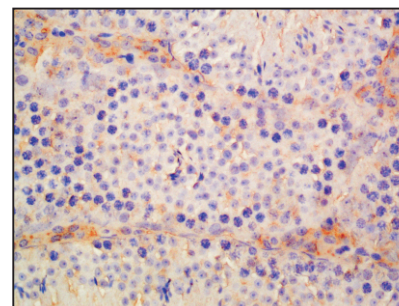
Western blot-Anti-KISS1 pAb

Lane 1: Human Jurkat cell lysate
All lanes: Anti-KISS1 at 1:1000 dilution
 Lysates/proteins at 20-50 μg per lane.
 Predicted band size: 15 kDa
 Observed band size: 15 kDa



Western blot-Anti-KISS1 pAb

Lane 1: Mouse placenta tissue lysate
Lane 2: Rat placenta tissue lysate
All lanes: Anti-KISS1 at 1:1000 dilution
 Lysates/proteins at 20-50 μg per lane.
 Predicted band size: 15 kDa
 Observed band size: 15 kDa



Immunohistochemistry-Anti-KISS1 pAb

Immunohistochemical analysis of paraffin-embedded mouse testicle using anti-KISS1 Rabbit Antibody at 1:500 dilution.
 Perform heat mediated antigen retrieval with Tris-EDTA buffer pH 9.0

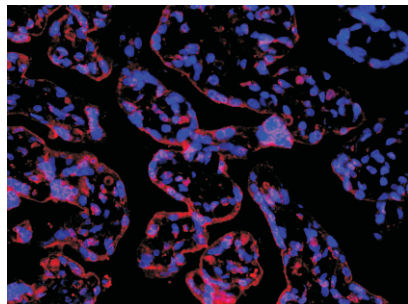
Anti-KISS1 Rabbit pAb



WL02651

For Research Use Only. Not For Use In Diagnostic Procedures

Product Information



Immunofluorescence-Anti-KISS1 pAb

Immunofluorescence analysis of paraffin-embedded human eclampsia placenta using anti-KISS1 Rabbit Antibody at 1:500 dilution.

Perform heat mediated antigen retrieval with Tris-EDTA buffer pH 9.0