

Anti-Tyrosinase Rabbit pAb



WL01000

For Research Use Only. Not For Use In Diagnostic Procedures

Product Information

Product name	Anti-Tyrosinase Rabbit pAb		
Source	Rabbit		
Species reactivity	Human, Mouse, Rat		
Tested applications	WB	1:1000-1:2000	
	IF	1:500	
Cellular localization	Melanosome membrane		
Pack size	50/100/200/500/1000µl		
Storage	Store at -20°C. Avoid freeze/thaw cycles.		
Storage buffer	Supplied in 20 mM phosphate (pH 7.5), 150 mM NaCl, 100 µg/ml		
	BSA, 50% glycerol and less than 0.02% sodium azide		

General Information

Background	Tyrosinase (TYR), a type I membrane protein and copper-containing enzyme, is involved in the production of melanin, the primary pigment found in vertebrates. Tyrosinase is the rate limiting enzyme catalyzing the first two steps in the melanin biosynthesis, converting tyrosine to L-dihydroxy-phenylalanine (DOPA) and subsequently to DOPAquinone. Tyrosinase is implicated to be an antigen target for melanoma vaccines. Anti-tyrosinase antibodies may be applied for immunotherapy in patients with malignant melanoma.
Immunogen	Polyclonal antibody is produced by immunizing animals with a synthetic peptide of Tyrosinase.
Purification	Polyclonal antibody was purified by Protein A affinity chromatography.

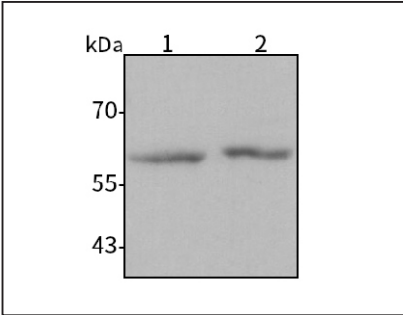
Anti-Tyrosinase Rabbit pAb



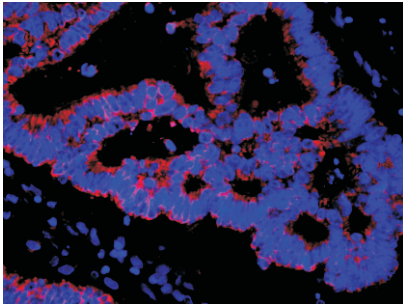
WL01000

For Research Use Only. Not For Use In Diagnostic Procedures

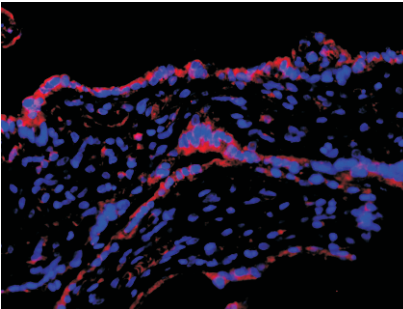
Product Images



Western blot-Anti-Tyrosinase pAb
Lane 1: Mouse skin tissue lysate
Lane 2: Rat skin tissue lysate
All lanes: Anti-Tyrosinase at 1:1000 dilution
Lysates/proteins at 20-50 µg per lane.
Predicted band size: 60 kDa
Observed band size: 60 kDa



Immunofluorescence-Anti-Tyrosinase pAb
Immunofluorescence analysis of paraffin-embedded human rectum cancer using anti-Tyrosinase Rabbit Antibody at 1:500 dilution.
Perform heat mediated antigen retrieval with Tris-EDTA buffer pH 9.0



Immunofluorescence-Anti-Tyrosinase pAb
Immunofluorescence analysis of paraffin-embedded human eclampsia placenta using anti-Tyrosinase Rabbit Antibody at 1:500 dilution.
Perform heat mediated antigen retrieval with Tris-EDTA buffer pH 9.0

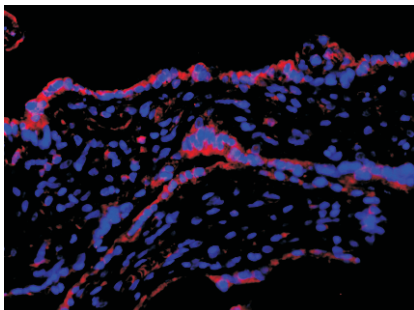
Anti-Tyrosinase Rabbit pAb



WL01000

For Research Use Only. Not For Use In Diagnostic Procedures

Product Information



Immunofluorescence-Anti-Tyrosinase pAb

Immunofluorescence analysis of paraffin-embedded human eclampsia placenta using anti-Tyrosinase Rabbit Antibody at 1:500 dilution.

Perform heat mediated antigen retrieval with Tris-EDTA buffer pH 9.0