

Anti-IL-1 α Rabbit pAb

WL02541

For Research Use Only. Not For Use In Diagnostic Procedures

Product Information

Product name	Anti-IL-1 α Rabbit pAb		
Source	Rabbit		
Species reactivity	Human, Mouse, Rat		
Tested applications	WB	1:1000-1:2000	
	IHC	1:100-1:400	
	IF	1:500	
Cellular localization	Secreted		
Pack size	50/100/200/500/1000 μ l		
Storage	Store at -20°C. Avoid freeze/thaw cycles.		
Storage buffer	Supplied in 20 mM phosphate (pH 7.5), 150 mM NaCl, 100 μ g/ml		
	BSA, 50% glycerol and less than 0.02% sodium azide		

General Information

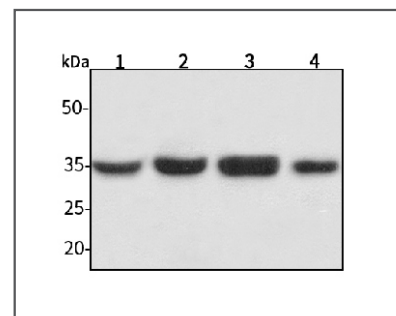
Background	Interleukin 1 (IL-1) is a name that designates two proteins, IL-1 alpha and IL-1 beta, which are the products of distinct genes, but which show approximately 25% amino acid sequence identity and which recognize the same cell surface receptors. IL-1 production is generally thought to be associated with inflammation, but it has also been shown to be expressed during kidney development, thymocyte differentiation and cartilage degradation. IL-1 has also been implicated in several pathological conditions including rheumatoid arthritis, inflammatory bowel disease and atherosclerosis.
Immunogen	Polyclonal antibody is produced by immunizing animals with a synthetic peptide of IL-1 α .
Purification	Polyclonal antibody was purified by protein A affinity chromatography.

Anti-IL-1 α Rabbit pAb

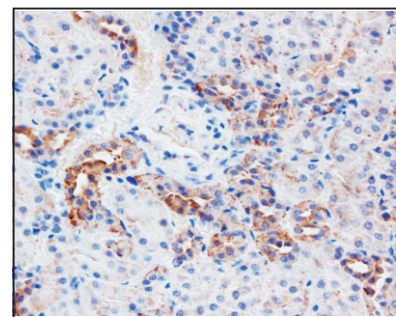
WL02541

For Research Use Only. Not For Use In Diagnostic Procedures

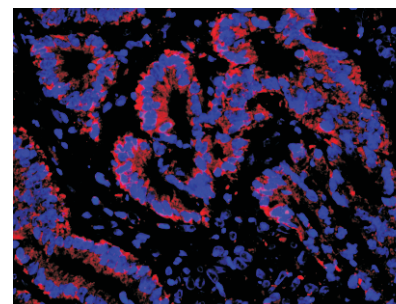
Product Images

Western blot-Anti-IL-1 α pAb

Lane 1: Mouse kidney tissue lysate
Lane 2: Mouse heart tissue lysate
Lane 3: Rat stomach tissue lysate
Lane 4: Rat spleen tissue lysate
All lanes: Anti-IL-1 α at 1:1000 dilution
 Lysates/proteins at 20-50 μ g per lane.
 Predicted band size: 31 kDa
 Observed band size: 31 kDa

Immunohistochemistry-Anti-IL-1 α pAb

Immunohistochemical analysis of paraffin-embedded rat kidney using anti-IL-1 α Rabbit Antibody at 1:200 dilution.
 Perform heat mediated antigen retrieval with Tris-EDTA buffer pH 9.0

Immunofluorescence-Anti-IL-1 α pAb

Immunofluorescence analysis of paraffin-embedded human rectum cancer using anti-IL-1 α Rabbit Antibody at 1:500 dilution.
 Perform heat mediated antigen retrieval with Tris-EDTA buffer pH 9.0

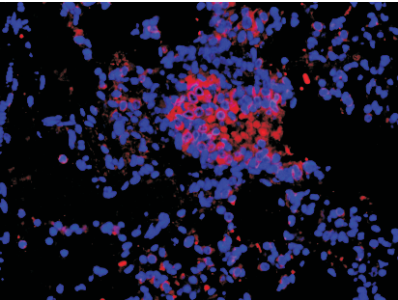
Anti-IL-1α Rabbit pAb



WL02541

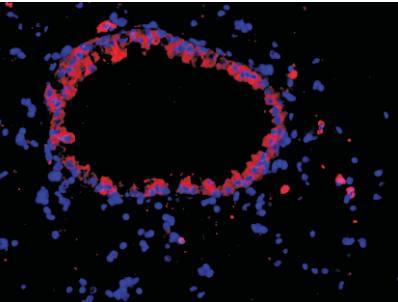
For Research Use Only. Not For Use In Diagnostic Procedures

Product Information



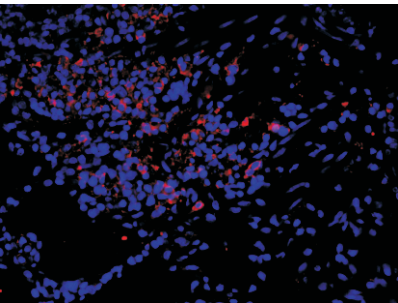
Immunofluorescence-Anti-IL-1α pAb

Immunofluorescence analysis of paraffin-embedded mouse lung using anti-IL-1α Rabbit Antibody at 1:500 dilution.
Perform heat mediated antigen retrieval with Tris-EDTA buffer pH 9.0



Immunofluorescence-Anti-IL-1α pAb

Immunofluorescence analysis of paraffin-embedded mouse lung using anti-IL-1α Rabbit Antibody at 1:500 dilution.
Perform heat mediated antigen retrieval with Tris-EDTA buffer pH 9.0



Immunofluorescence-Anti-IL-1α pAb

Immunofluorescence analysis of paraffin-embedded rat lung using anti-IL-1α Rabbit Antibody at 1:500 dilution.
Perform heat mediated antigen retrieval with Tris-EDTA buffer pH 9.0

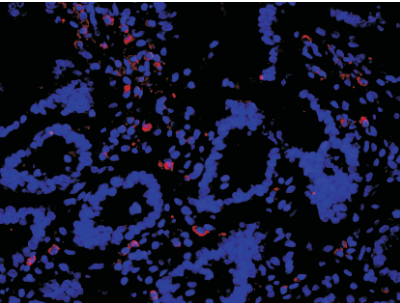
Anti-IL-1α Rabbit pAb



WL02541

For Research Use Only. Not For Use In Diagnostic Procedures

Product Information



Immunofluorescence-Anti-IL-1α pAb

Immunofluorescence analysis of paraffin-embedded rat colon using anti-IL-1α Rabbit Antibody at 1:500 dilution.
Perform heat mediated antigen retrieval with Tris-EDTA buffer pH 9.0