

Anti-CKR-1/CCR1 Rabbit pAb



WL01099

For Research Use Only. Not For Use In Diagnostic Procedures

Product Information

Product name	Anti-CKR-1/CCR1 Rabbit pAb	
Source	Rabbit	
Species reactivity	Human, Mouse, Rat	
Tested applications	WB	1:500-1:1000
	IHC	1:100-1:400
Cellular localization	Cell membrane	
Pack size	50/100/200/500/1000μl	
Storage	Store at -20°C. Avoid freeze/thaw cycles.	
Storage buffer	Supplied in 20 mM phosphate (pH 7.5), 150 mM NaCl, 100 μg/ml	
	BSA, 50% glycerol and less than 0.02% sodium azide	

General Information

Background	C-C or β chemokine family members are characterized by a pair of adjacent cysteine residues and serve as potent chemoattractants and activators of monocytes and T cells. C-C chemokine receptor family members include CKR-1, CKR-2, CKR-2A, CKR-2B, CKR-3, CKR-4, CKR-5, CKR-6, CKR-7, CKR-8, CKR-9, CKR-10 and the Duffy blood group antigen. Each of these receptors are G protein-coupled, seven pass transmembrane domain proteins whose major physiological role is to function in the chemotaxis of T cells and phagocytic cells to areas of inflammation. However, this receptor family has also been shown to facilitate viral infection.
Immunogen	Polyclonal antibody is produced by immunizing animals with a synthetic peptide of CKR-1/CCR1.
Purification	Polyclonal antibody was purified by immunogen affinity chromatography.

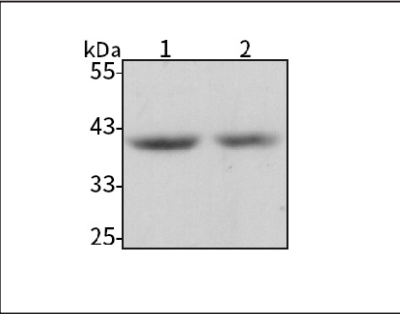
Anti-CKR-1/CCR1 Rabbit pAb



WL01099

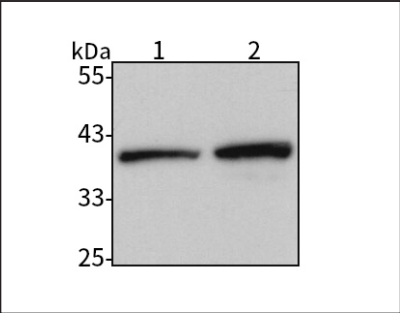
For Research Use Only. Not For Use In Diagnostic Procedures

Product Images



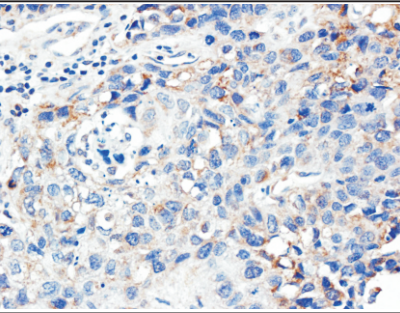
Western blot-Anti-CKR-1/CCR1 pAb

Lane 1: Human Hela cell lysate
Lane 2: Human HEK293 cell lysate
All lanes: Anti-CKR-1/CCR1 at 1:1000 dilution
Lysates/proteins at 20-50 μg per lane.
Predicted band size: 41 kDa
Observed band size: 41 kDa



Western blot-Anti-CKR-1/CCR1 pAb

Lane 1: Mouse bone marrow tissue lysate
Lane 2: Rat bone marrow tissue lysate
Lane 4: Rat lung tissue lysate
All lanes: Anti-CKR-1/CCR1 at 1:500 dilution
Lysates/proteins at 20-50 μg per lane.
Predicted band size: 41 kDa
Observed band size: 41 kDa



Immunohistochemistry-Anti-CKR-1/CCR1 pAb

Immunohistochemical analysis of paraffin-embedded human bladder cancer using anti-CKR-1/CCR1 Rabbit Antibody at 1:300 dilution. Perform heat mediated antigen retrieval with Tris-EDTA buffer pH 9.0

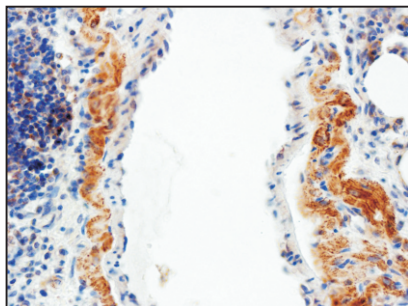
Anti-CKR-1/CCR1 Rabbit pAb



WL01099

For Research Use Only. Not For Use In Diagnostic Procedures

Product Images



Immunohistochemistry-Anti-CKR-1/CCR1 pAb

Immunohistochemical analysis of paraffin-embedded rat lung (LPS treated) using anti-CKR-1/CCR1 Rabbit Antibody at 1:300 dilution.

Perform heat mediated antigen retrieval with Tris-EDTA buffer pH 9.0