

## Anti-BACH1 Rabbit pAb



WL05212

For Research Use Only. Not For Use In Diagnostic Procedures

## Product Information

<b>Product name</b>	Anti-BACH1 Rabbit pAb
<b>Source</b>	Rabbit
<b>Species reactivity</b>	Human
<b>Tested applications</b>	WB 1:1000-1:2000
<b>Pack size</b>	50/100/200/500/1000μl
<b>Storage</b>	Store at -20°C. <b>Avoid freeze/thaw cycles.</b>
<b>Storage buffer</b>	Supplied in 20 mM phosphate (pH 7.5), 150 mM NaCl, 100 μg/ml BSA, 50% glycerol and less than 0.02% sodium azide

## General Information

<b>Background</b>	BTB and CNC homology 1, basic leucine zipper transcription factor 1(BACH1) is a heme-regulated transcriptional regulator that acts as repressor or activator and a member of the AP-1 superfamily. MafK belongs to the small Maf family that can function as transcriptional activators or repressors depending on the proteins with which they form heterodimers. BACH1 has crucial roles in both stress responses and transformation by H-RasV12.
<b>Immunogen</b>	Polyclonal antibody is produced by immunizing animals with a synthetic peptide of BACH1.
<b>Purification</b>	Polyclonal antibody was purified by Protein A affinity chromatography.

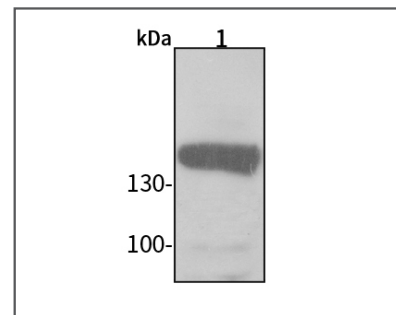
## Anti-BACH1 Rabbit pAb



WL05212

For Research Use Only. Not For Use In Diagnostic Procedures

## Product Images



## Western blot-Anti-BACH1 pAb

Lane 1: Human SW480 cell lysate  
 All lanes: Anti-BACH1 at 1:1000 dilution  
 Lysates/proteins at 20-50 μg per lane.  
 Predicted band size: 82 kDa  
 Observed band size: 100-140 kDa