

## Anti-PCNA Rabbit pAb



WL02208

For Research Use Only. Not For Use In Diagnostic Procedures

## Product Information

<b>Product name</b>	Anti-PCNA Rabbit pAb		
<b>Source</b>	Rabbit		
<b>Species reactivity</b>	Human, Mouse, Rat		
<b>Tested applications</b>	Western blot	1:500-1:1000	
	Immunohistochemistry	1:100	
<b>Cellular localization</b>	Nucleus.		
<b>Pack size</b>	50/100/200/500/1000μl		
<b>Storage</b>	Store at -20°C. <b>Avoid freeze/thaw cycles.</b>		
<b>Storage buffer</b>	Supplied in 20 mM phosphate (pH 7.5), 150 mM NaCl, 100 μg/ml		
	BSA, 50% glycerol and less than 0.02% sodium azide		

## General Information

<b>Background</b>	The proliferating cell nuclear antigen (PCNA), a protein synthesized in early G1 and S phases of the cell cycle, functions in cell cycle progression, DNA replication and DNA repair. In early S phase, PCNA exhibits granular distribution and is absent from the nucleoli; however, in late S phase, it relocates to the nucleoli. PCNA exists in two basic forms: one involved in ongoing DNA replication, which localizes specifically to the nucleus, and a second, soluble form, not implicated in constant synthesis. Interestingly, the latter form degrades in the presence of organic solvents, rendering it undetectable by histological methods in tissues using organic fixatives, and thus also providing a method of visualizing only the synthesizing form.
<b>Immunogen</b>	Polyclonal antibody is produced by immunizing animals with a synthetic peptide of PCNA.
<b>Purification</b>	Polyclonal antibody was purified by immunogen affinity chromatography.

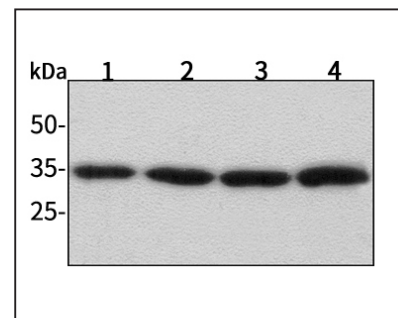
## Anti-PCNA Rabbit pAb



WL02208

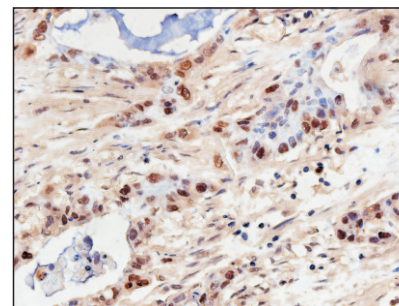
For Research Use Only. Not For Use In Diagnostic Procedures

## Product Images



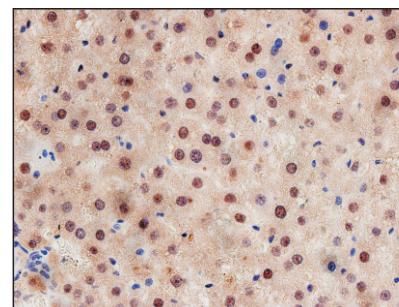
## Western blot-Anti-PCNA pAb

Lane 1: Human HepG2 cell Nuclear Protein  
 Lane 2: Human Hela cell Nuclear Protein  
 Lane 3: Human BGC-823 cell Nuclear Protein  
 Lane 4: Human MGC-803 cell Nuclear Protein  
 All lanes: Anti-PCNA at 1:1000 dilution  
 Lysates/proteins at 20-50 μg per lane.  
 Predicted band size: 29 kDa  
 Observed band size: 36-38 kDa



## Immunohistochemistry-Anti-PCNA pAb

Sample: Human pancreatic cancer tissue  
 Antigen retrieval: pH 6.0 citrate buffer  
 Primary antibody: 1:100, 4°C, overnight  
 Secondary antibody-Biotin: 1:150, 37°C, 1h  
 Streptavidin-HRP: 1:200, 37°C, 30min  
 Color Developing: DAB



## Immunohistochemistry-Anti-PCNA pAb

Sample: Rat liver of diabetes tissue  
 Antigen retrieval: pH 6.0 citrate buffer  
 Primary antibody: 1:100, 4°C, overnight  
 Secondary antibody-Biotin: 1:150, 37°C, 1h  
 Streptavidin-HRP: 1:200, 37°C, 30min  
 Color Developing: DAB