

## Anti-CD147/EMMPRIN Rabbit pAb



WL02775

For Research Use Only. Not For Use In Diagnostic Procedures

## Product Information

<b>Product name</b>	Anti-CD147/EMMPRIN Rabbit pAb	
<b>Source</b>	Rabbit	
<b>Species reactivity</b>	Human	
<b>Tested applications</b>	WB	1:1000-1:2000
<b>Pack size</b>	50/100/200/500/1000μl	
<b>Storage</b>	Store at -20°C. <b>Avoid freeze/thaw cycles.</b>	
<b>Storage buffer</b>	Supplied in 20 mM phosphate (pH 7.5), 150 mM NaCl, 100 μg/ml BSA, 50% glycerol and less than 0.02% sodium azide	

## General Information

<b>Background</b>	Cd147 is a determinant for the Ok blood group system. CD147 has been shown to be an essential receptor on red blood cells for the human malaria parasite, Plasmodium falciparum. CD147 is a type I integral membrane receptor that has many ligands, including the cyclophilin (CyP) proteins Cyp-A and Cyp-B and certain integrins. It is expressed by many cell types, including epithelial cells, endothelial cells and leukocytes. CD147 has been shown to interact with Ubiquitin C. CD147 is bound by the Pfrh5 protein on the surface of the malaria parasite.
-------------------	---

<b>Immunogen</b>	Polyclonal antibody is produced by immunizing animals with a synthetic peptide of CD147/EMMPRIN.
------------------	--

<b>Purification</b>	Polyclonal antibody was purified by Protein A affinity chromatography.
---------------------	--

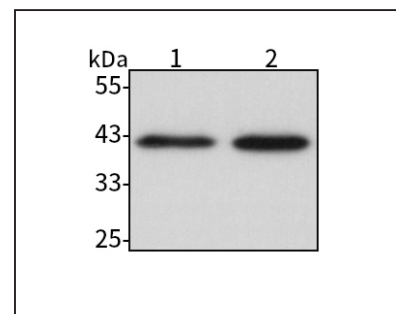
## Anti-CD147/EMMPRIN Rabbit pAb



WL02775

For Research Use Only. Not For Use In Diagnostic Procedures

## Product Images



Western blot-Anti-CD147/EMMPRIN pAb

Lane 1: Human A2780 cell lysate

Lane 2: Human Hela cell lysate

All lanes: Anti-CD147/EMMPRIN at 1:1000 dilution

Lysates/proteins at 20-50 μg per lane.

Predicted band size: 42 kDa

Observed band size: 42 kDa