

Anti-Alix Rabbit pAb



WL03063

For Research Use Only. Not For Use In Diagnostic Procedures

Product Information

Product name	Anti-Alix Rabbit pAb		
Source	Rabbit		
Species reactivity	Human, Mouse, Rat		
Tested applications	WB	1:1000-1:2000	
	IHC	1:100-1:400	
	IF	1:500	
Cellular localization	Cytoplasm. Melanosome. cytoskeleton		
Pack size	50/100/200/500/1000μl		
Storage	Store at -20°C. Avoid freeze/thaw cycles.		
Storage buffer	Supplied in 20 mM phosphate (pH 7.5), 150 mM NaCl, 100 μg/ml		
	BSA, 50% glycerol and less than 0.02% sodium azide		

General Information

Background	Alix, a phylogenetically conserved cytosolic scaffold protein, contains an N-terminal Bro1 domain, a coiled-coil region and a C-terminal proline-rich domain. Alix interacts with apoptosis-associated proteins (ALG-2 and PDCD6) and with the endocytosis-regulator CIN85. Additionally, Alix interacts with the endosomal sorting complexes required for transport (ESCRT) proteins (Tsg101 and CHMP4) and can associate with HIV-1. Alix is involved in the concentration and sorting of cargo proteins of the multivesicular body for incorporation into vesicles.
Immunogen	Polyclonal antibody is produced by immunizing animals with a synthetic peptide of Alix.
Purification	Polyclonal antibody was purified by Protein A affinity chromatography.

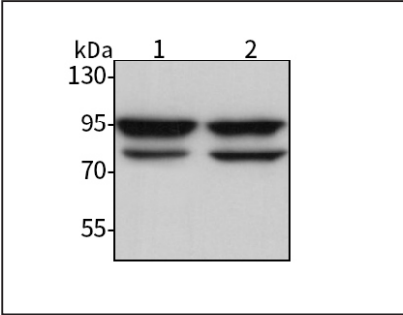
Anti-Alix Rabbit pAb



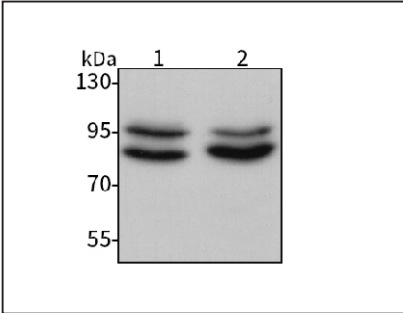
WL03063

For Research Use Only. Not For Use In Diagnostic Procedures

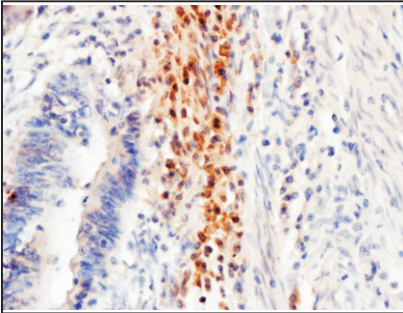
Product Images



Western blot-Anti-Alix pAb
Lane 1: Human HeLa cell lysate
Lane 2: Human HL-60 cell lysate
All lanes: Anti-Alix at 1:1000 dilution
Lysates/proteins at 20-50 μg per lane.
Predicted band size: 96 kDa
Observed band size: 96,75-80 kDa



Western blot-Anti-Alix pAb
Lane 1: Mouse liver tissue lysate
Lane 2: Rat liver tissue lysate
All lanes: Anti-Alix at 1:1000 dilution
Lysates/proteins at 20-50 μg per lane.
Predicted band size: 96 kDa
Observed band size: 96,75-80 kDa



Immunohistochemistry-Anti-Alix pAb
Immunohistochemical analysis of paraffin-embedded human colon cancer using anti-Alix Rabbit Antibody at 1:250 dilution.
Perform heat mediated antigen retrieval with Tris-EDTA buffer pH 9.0

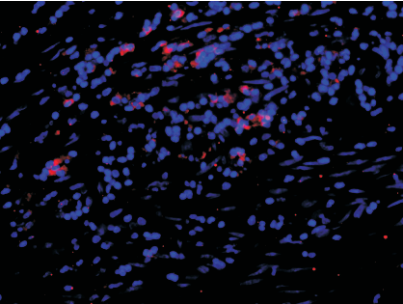
Anti-Alix Rabbit pAb



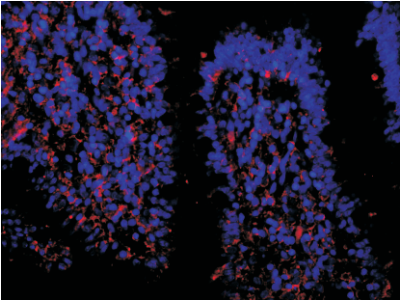
For Research Use Only. Not For Use In Diagnostic Procedures

WL03063

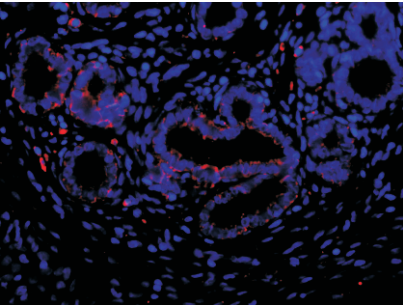
Product Information



Immunofluorescence-Anti-Alix pAb
Immunofluorescence analysis of paraffin-embedded human colon cancer using anti-Alix Rabbit Antibody at 1:500 dilution.
Perform heat mediated antigen retrieval with Tris-EDTA buffer pH 9.0



Immunofluorescence-Anti-Alix pAb
Immunofluorescence analysis of paraffin-embedded rat colon using anti-Alix Rabbit Antibody at 1:500 dilution.
Perform heat mediated antigen retrieval with Tris-EDTA buffer pH 9.0



Immunofluorescence-Anti-Alix pAb
Immunofluorescence analysis of paraffin-embedded rat uterus using anti-Alix Rabbit Antibody at 1:500 dilution.
Perform heat mediated antigen retrieval with Tris-EDTA buffer pH 9.0