

## Anti-CD31 Rabbit pAb



WL03674

For Research Use Only. Not For Use In Diagnostic Procedures

## Product Information

<b>Product name</b>	Anti-CD31 Rabbit pAb
<b>Source</b>	Rabbit
<b>Species reactivity</b>	Human, Mouse, Rat
<b>Tested applications</b>	WB 1:500-1:1000
<b>Pack size</b>	50/100/200/500/1000μl
<b>Storage</b>	Store at -20°C. <b>Avoid freeze/thaw cycles.</b>
<b>Storage buffer</b>	Supplied in 20 mM phosphate (pH 7.5), 150 mM NaCl, 100 μg/ml BSA, 50% glycerol and less than 0.02% sodium azide

## General Information

**Background**

Cd31, also known as platelet endothelial cell adhesion molecule 1 (PECAM1), is a type I integral membrane glycoprotein and a member of the immunoglobulin superfamily of cell surface receptors. The encoded protein is a member of the immunoglobulin superfamily and is likely involved in leukocyte migration, angiogenesis, and integrin activation. Other studies have also indicated that CD31 and CD34 can be used as markers for myeloid progenitor cells and recognize different subsets of myeloid leukemia infiltrates (granular sarcomas).

**Immunogen**

Polyclonal antibody is produced by immunizing animals with a synthetic peptide of CD31.

**Purification**

Polyclonal antibody was purified by immunogen affinity chromatography.

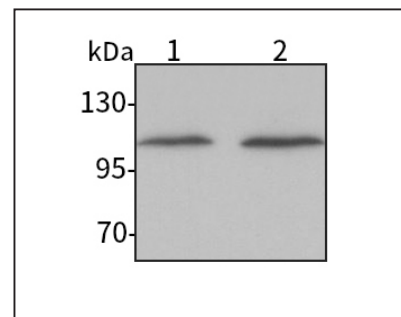
## Anti-CD31 Rabbit pAb



WL03674

For Research Use Only. Not For Use In Diagnostic Procedures

## Product Images



Western blot-Anti-CD31 pAb

Lane 1: Human HUVEC cell lysate

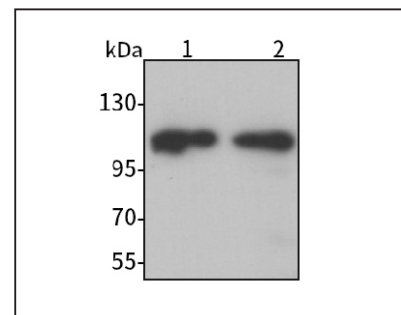
Lane 2: Human THP-1 cell lysate

All lanes: Anti-CD31 at 1:1000 dilution

Lysates/proteins at 20-50 μg per lane.

Predicted band size: 81 kDa

Observed band size: 100-140 kDa



Western blot-Anti-CD31 pAb

Lane 1: Mouse lung tissue lysate

Lane 2: Rat lung tissue lysate

All lanes: Anti-CD31 at 1:1000 dilution

Lysates/proteins at 20-50 μg per lane.

Predicted band size: 81 kDa

Observed band size: 100-140 kDa